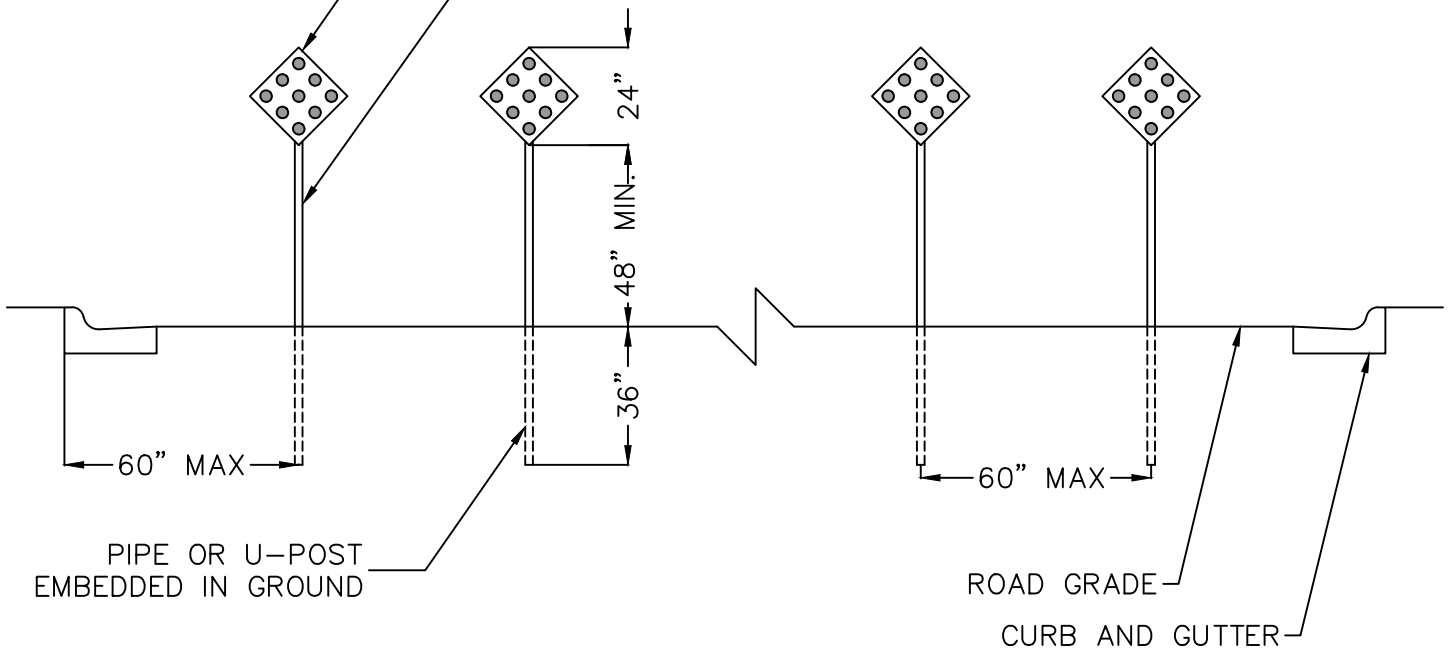


18"X18" DIAMOND BLACK PANEL WITH NINE  
3" RED REFLECTORS OF HIGH INTENSITY  
PRISMATIC SHEETING QUALITY

2" GALVANIZED PIPE, SCHEDULE 40, OR  
GALVANIZED STEEL U-POST, 2 LB/FT



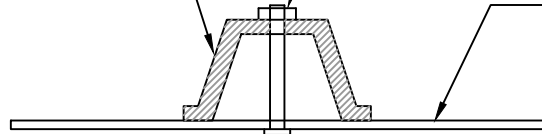
CADMIUM PLATED HEX HEAD  
BOLT, WASHER, LOCKWASHER,  
AND NUT

POST MOUNTING HARDWARE

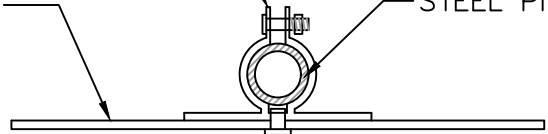
STEEL U-POST

SIGN PANEL

STEEL PIPE



U CHANNEL CONSTRUCTION



PIPE CONSTRUCTION

### DEAD END - WARNING SIGN DETAIL