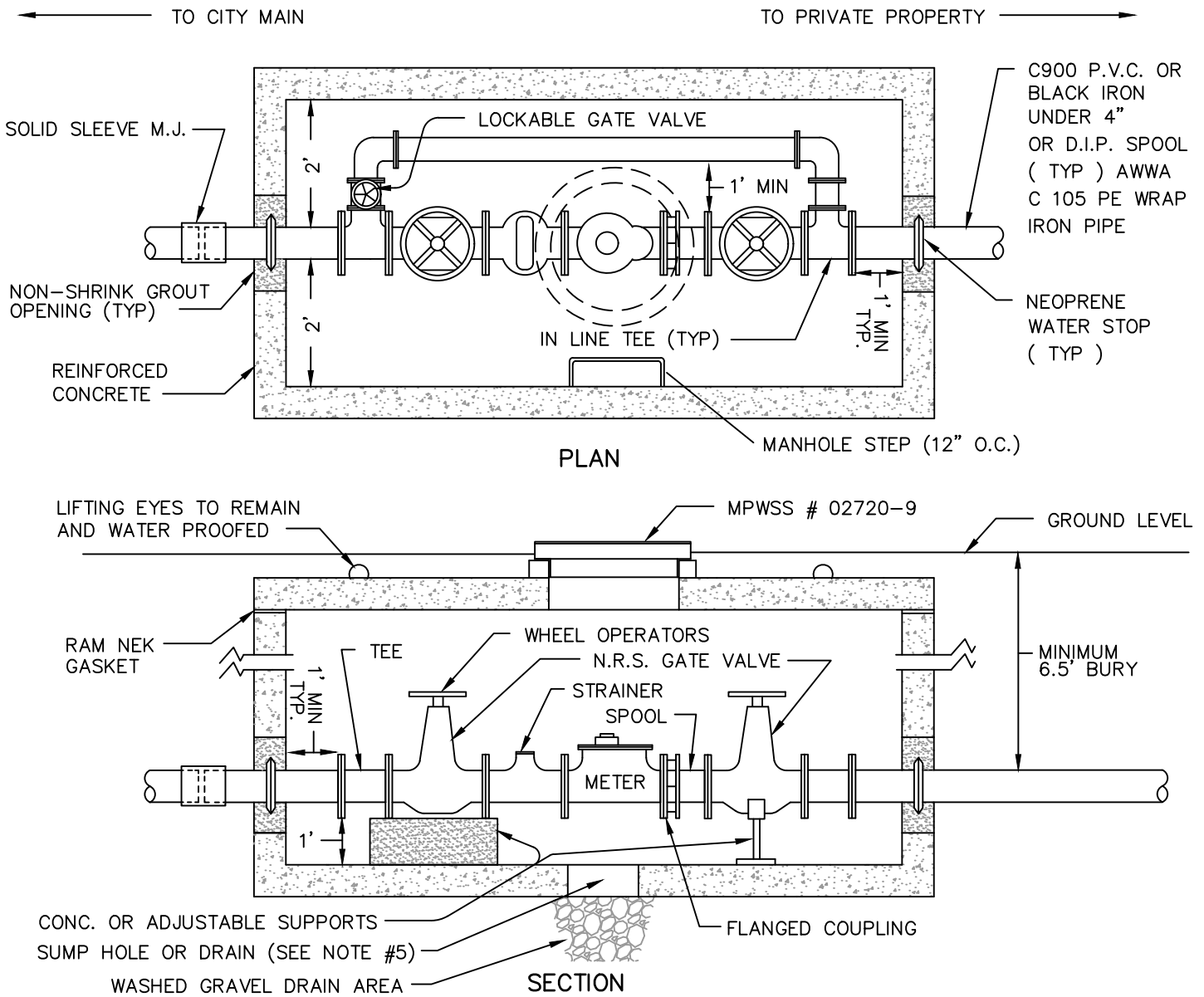


NOTES :

1. THE SIZE OF BYPASS LINE TO BE DETERMINED BY FIRE FLOW REQUIREMENTS, HOWEVER, IN NO CASE SHALL A BYPASS LINE BE MORE THAN ONE (1) PIPE SIZE SMALLER THAN THE PRIMARY FEED. ALL FITTINGS ON 4" AND LARGER PIPE SHALL BE FLANGED, LESS THAN 4" MAY BE THREADED.
2. A CHECK VALVE SHALL BE INSTALLED ON DISCHARGE SIDE OF VALVING IF ON A LOOPED SYSTEM OR WHERE HIGHER HEADS MAY BE DEVELOPED ON DISCHARGE SIDE.
3. VAULT SHALL NOT BE PLACED IN AN AREA ACCESSIBLE TO VEHICLE TRAFFIC. ACCESS HATCH TO BE CENTERED OVER WATER METER AND SIZED TO ALLOW REMOVAL OF METER, MINIMUM SIZE OF HATCH MUST ALLOW PERSONNEL TO ENTER AND EXIT VAULT. HATCH SHALL BE APPROVED BY CITY PRIOR TO INSTALLATION.
4. RIGID INSULATION SHALL BE APPLIED TO OUTSIDE OF VAULT TO A DEPTH OF 3' BELOW GROUND SURFACE. MANHOLE FRAME AND COVER SHALL BE INSULATED WITH ADHESIVE TYPE FOAM INSULATION.
5. IF VAULT IS NEAR GROUND WATER, WATER PROOFING SHALL BE APPLIED TO THE OUTSIDE OF VAULT, NO DRAIN HOLE.
6. REMOTES FOR REMOTE READ METERS SHALL BE MOUNTED ON A 4X4 POST 42" ABOVE GROUND. WIRE SHALL BE RAN INSIDE CONDUIT FROM VAULT TO THE 4X4 POST.



TYPICAL WATER METER VAULT DETAIL