

**REFERENCE NOTES**

1. REFER TO DESIGN RETENTION WALL AND FENCE ELEVATIONS FOR HEIGHTS AND MATERIALS SPECIFICATIONS.



**SPRINGFIELD SUITES**  
**MARKET**

**BAKES**  
**ALCOTT**  
**CONSULTANTS, INC.**  
 415 West 8th St.  
 Baltimore, Maryland 21201  
 (410) 781-4014

**WOODWOOD**  
 ARCHITECTURAL SERVICES  
 7400 U.S. 441, Suite 100, P.O. Box 100  
 Annapolis, Maryland 21403  
 (410) 268-8100  
 Fax: (410) 268-8114  
 www.woodwood.com

**STATES LICENSED:**  
 Washington  
 Virginia  
 Maryland  
 Delaware  
 Pennsylvania  
 North Carolina  
 South Carolina  
 Florida  
 Georgia  
 Alabama  
 Mississippi  
 Louisiana  
 Texas  
 Oklahoma  
 Kansas  
 Nebraska  
 Missouri  
 Arkansas  
 Louisiana  
 Mississippi  
 Alabama  
 Georgia  
 Florida  
 South Carolina  
 North Carolina  
 Virginia  
 Maryland  
 Delaware  
 Washington

**Springhill Suites**  
 132-140th Street

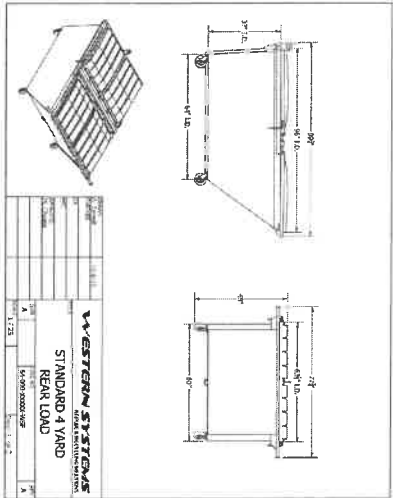
3rd Street NW  
 Great Falls, Montana

**SCALE:** 1/4" = 1'-0"  
**DATE:** 11/20/06  
**ISSUE:** 11/20/06

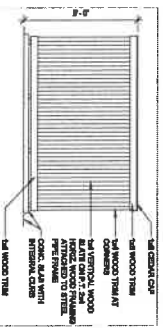
**DESIGN/CONSTRUCTION:**  
 ARCHITECT:  
 ENGINEER:  
 CONTRACTOR:

**SITES DETAILS:**

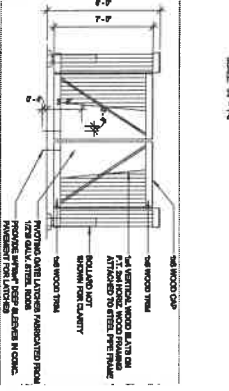
**SHEET NO.:** A112  
**PROJECT NO.:** 1506  
**REVISIONS:**



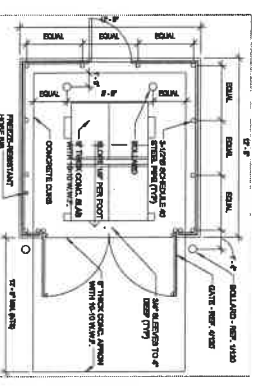
**5 TRASH DUMPSTER**  
 All per Ross Street  
 City of Great Falls, MT



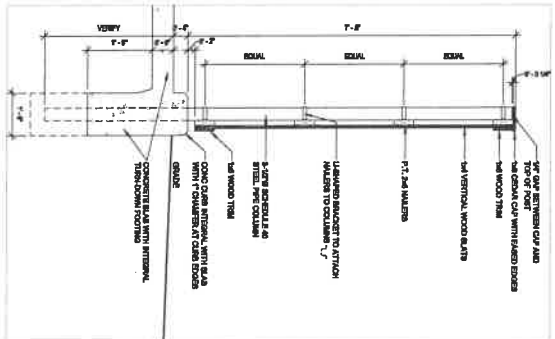
**3 TRASH ENCLOSURE SIDE AND REAR ELEVATION**  
 SCALE: 1/4" = 1'-0"



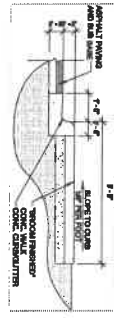
**2 TRASH ENCLOSURE FRONT ELEVATION**  
 SCALE: 1/4" = 1'-0"



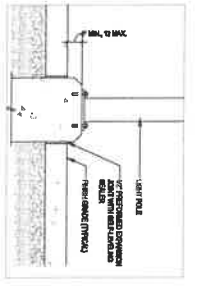
**1 TRASH ENCLOSURE PLAN**  
 SCALE: 1/4" = 1'-0"



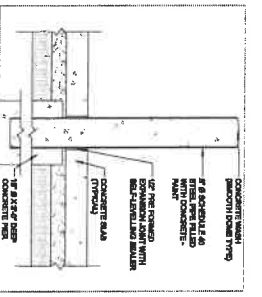
**4 TRASH ENCLOSURE SECTION**  
 SCALE: 1/4" = 1'-0"



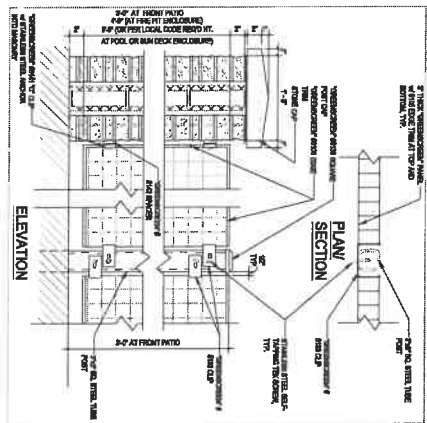
**8 SIDEWALK CURB DETAIL**  
 SCALE: 1/4" = 1'-0"



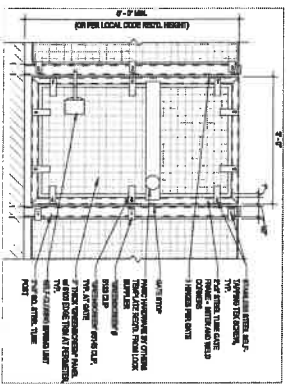
**7 LIGHT POLE DETAIL**  
 SCALE: 1/4" = 1'-0"



**6 BOLLARD DETAIL**  
 SCALE: 1/4" = 1'-0"



**10 SCREEN WALL DETAIL**  
 SCALE: 1/4" = 1'-0"



**9 SCREEN WALL GATE DETAIL**  
 SCALE: 1/4" = 1'-0"