

**JAMES T. ALCOTT CONSTRUCTION, INC.**  
 415 River Dr N  
 Great Falls, MT 59405  
 (406) 761-0018

**WEDGWOOD**  
 ARCHITECTURAL SERVICES  
 Lyle Andrew Bremmeyer, Architect  
 7600 N.E. 41st Street, Suite #330  
 Vancouver, Washington 98662  
 (360) 892-9090  
 FAX (360) 892-2146  
 AndyB@wedgwoodservices.com

**STATES LICENSED:**  
 Washington Wyoming  
 Oregon New Mexico  
 Michigan Texas  
 Colorado Arizona  
 Florida Nevada  
 Utah Montana  
 Georgia Missouri  
 Idaho Illinois

**Springhill Suites**  
 132-Unit Hotel

3rd Street NW  
 Great Falls, Montana

SCALE: 1"=50'-0"  
 DATE OF ISSUE: May 9, 2016

DESIGN DOCUMENTS	_____
APPROVAL	_____
PERMIT DOCUMENTS	_____
BID DOCUMENTS	_____
CONTRACT DOC.	_____
REVISIONS	_____
DATE	# SUBJECT
▲	_____
▲	_____
▲	_____
▲	_____

Landscape Plan

SHEET NO.  
**LS2**

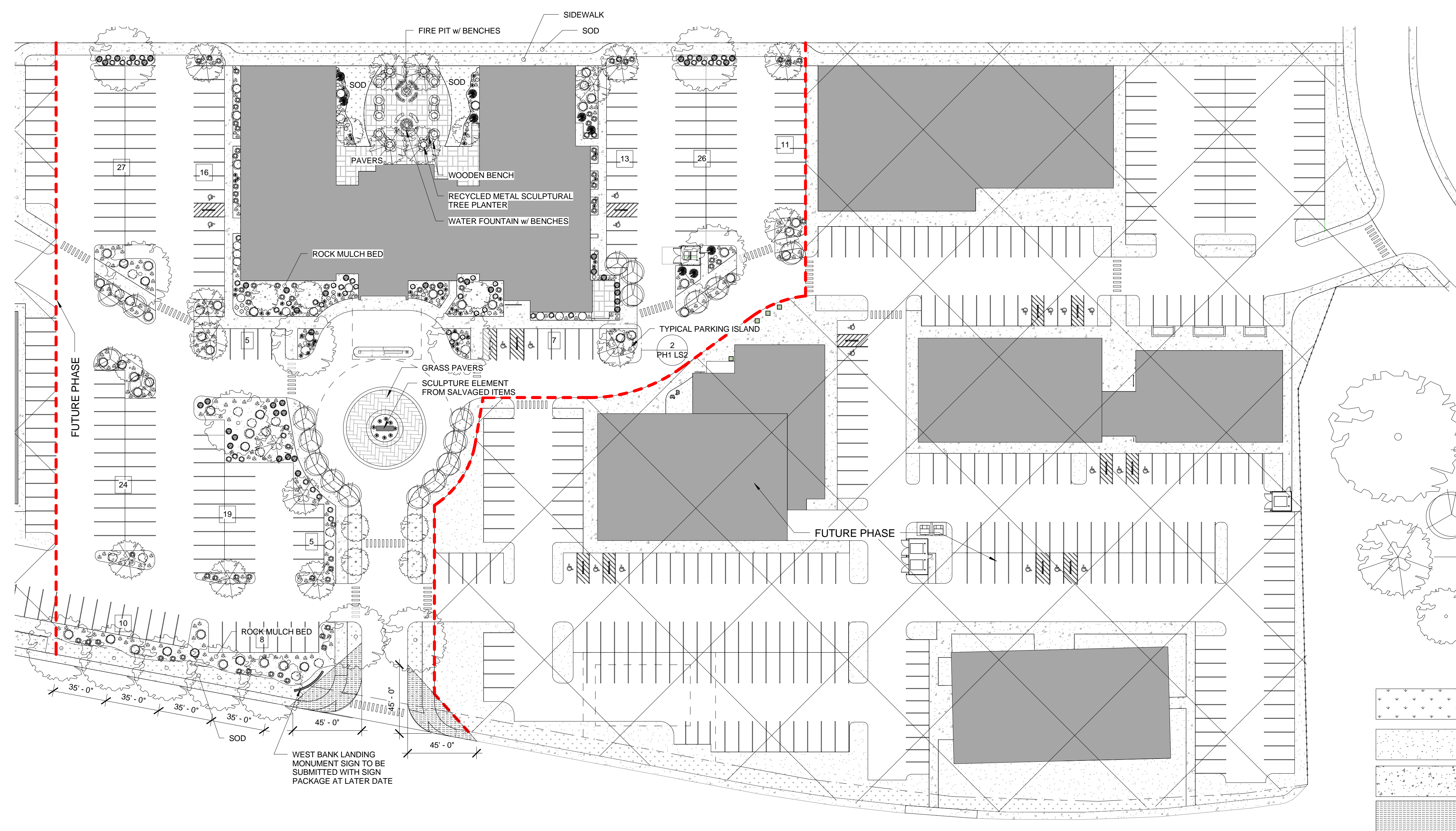
PROJECT NO.  
 1506

# HOTEL LANDSCAPING

SITE AREA: 155,682 SF (CALCULATED FOR PHASE 1 AREA)  
 ZONE: M2  
 LANDSCAPING REQUIRED: 15%  
 LANDSCAPE AREA REQUIRED = 23,352 SF PROVIDED = 25,864 SF  
 TREES REQUIRED = 59  
 SHRUBS REQUIRED = 409

**IRRIGATION**  
 • THE CONTRACTOR SHALL PROVIDE ALL MATERIALS AND LABOR NECESSARY FOR A FULLY OPERATIONAL, AUTOMATIC UNDERGROUND IRRIGATION SYSTEM.  
 • ALL PLANTINGS TO BE DRIP IRRIGATED. ALL SOD AREAS TO BE SPRAY IRRIGATED.

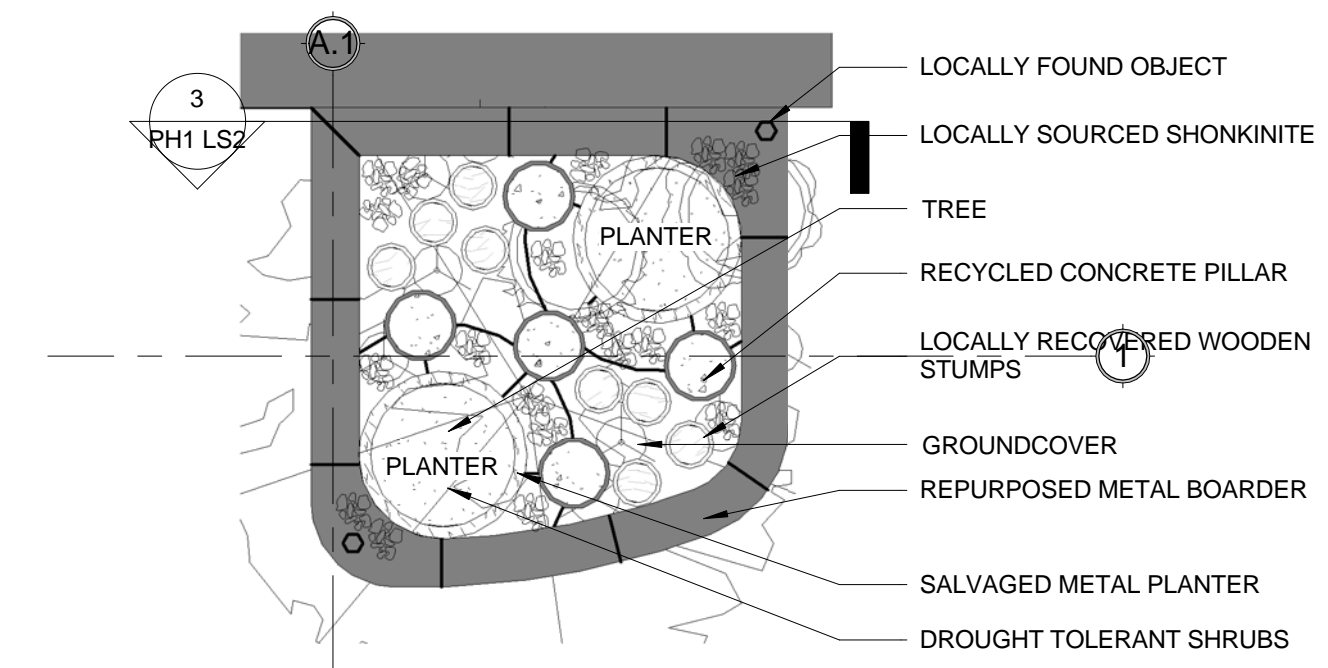
**NOTES**  
 • CHANGES TO PLANT SPECIES WILL BE APPROVED BY PLANNING AND COMMUNITY DEVELOPMENT DEPARTMENT  
 • FINAL PLANTING LAYOUTS AND ARRANGEMENTS WILL BE DESIGNED BY LANDSCAPE ARTIST MIKE HOLLERN WITH TOTAL PLANT COUNT WILL BE MET



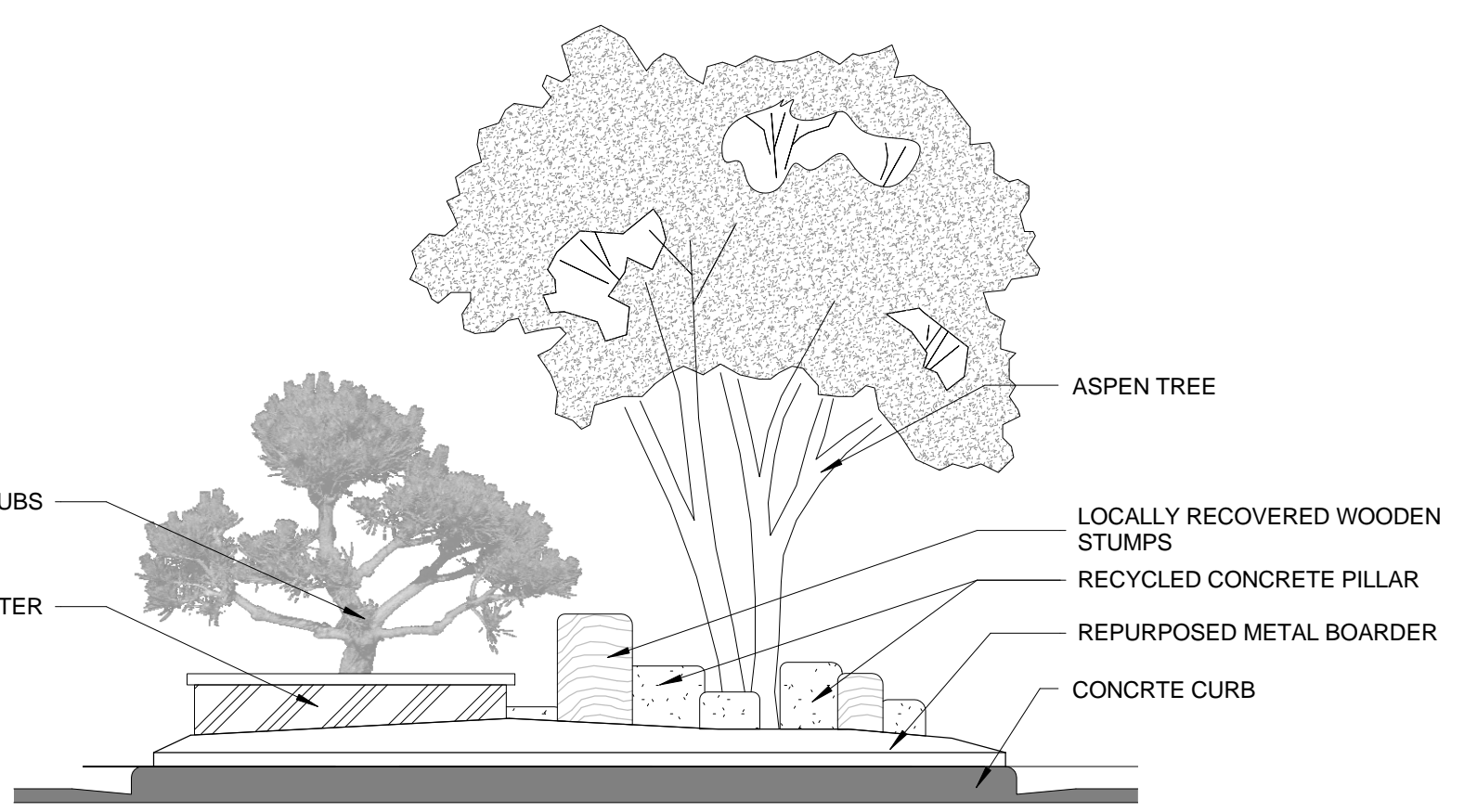
- WICHITA BLUE JUNIPER
  - JUNIPER, CALGARY CARPET
  - JUNIPER, BUFFALO
  - JUNIPER, BLUE RUG
  - JUNIPER, UPRIGHT
  - YUCCA
  - PINK BEAUTY POTENTILLA
  - BLUESTEM GRASS
  - BLUE OAT GRASS
  - SPIREA
  - SPRING SNOW CRABAPPLE
  - BLANKET FLOWER
  - SALVIA
  - SEDUM
- 
- AMERICAN LINDEN
  - QUAKING ASPEN
  - SKYLINE HONEYLOCUST
- 
- SOD - LOCALLY SOURCED
  - ROCK MULCH BED
  - CONCRETE SIDEWALK
  - CLEAR VISION TRIANGLE
- 
- ROCK MULCH BEDS TO INCLUDE**
- ROCKS:
    - Lykin Colored Granite
    - Shonkin
  - FOUND OBJECTS:
    - TREE STUMPS
    - RECYCLED METAL
  - CONCRETE PILLARS

**LANDSCAPE LEGEND**  
 1" = 20'-0"

**1 PHASE 1 Landscape Plan - Hotel Site**  
 1" = 40'-0"



**2 TYPICAL PARKING ISLAND**  
 1/8" = 1'-0"



**3 TYPICAL PARKING ISLAND SECTION**  
 1/4" = 1'-0"

PH 1 - Planting Schedule					
COUNT	COMMON NAME	BOTANICAL NAME	Group	SIZE	PHASE
<b>DECIDUOUS TREE</b>					
13	AMERICAN LINDEN	TILIA AMERICANA	DECIDUOUS TREE	2" B & B	PH1
20	QUAKING ASPEN	POPULUS TREMULOIDES	DECIDUOUS TREE	1.5" B & B	PH1
17	SKYLINE HONEYLOCUST	GLEDITSIA TRIACANTHOS 'SKYCOLE'	DECIDUOUS TREE	2" B & B	PH1
10	SPRING SNOW CRAB	MALUS X SPRING SNOW	DECIDUOUS TREE	2" B & B	PH1
60					
<b>PERENNIAL</b>					
54	BLANKET FLOWER	GAILLARDIA	PERENNIAL	1 GAL. CONTAINER	PH1
27	SALVIA	SALVIA NERMOROSA	PERENNIAL	1 GAL. CONTAINER	PH1
232	SEDUM	SEDUM RUPESTRE	PERENNIAL	1 GAL. CONTAINER	PH1
313					
<b>SHRUB</b>					
70	BLUE OAT GRASS	HELIOTRICHON SEMPERVIRENS	SHRUB	2 GAL. CONTAINER	PH1
38	BLUESTEM GRASS	SCHIZACHYRIUM SCOPARIUM	SHRUB	2 GAL. CONTAINER	PH1
13	JUNIPER, BLUE RUG	JUNIPERUS HORIZONTALIS 'WILTONII'	SHRUB	2 GAL. CONTAINER	PH1
40	JUNIPER, BUFFALO	JUNIPERUS SABINA 'BUFFALO'	SHRUB	2 GAL. CONTAINER	PH1
18	JUNIPER, CALGARY CARPET	JUNIPERUS SABINA 'MANNA'	SHRUB	2 GAL. CONTAINER	PH1
13	POTENTILLA	POTENTILLA FRUTICOSA	SHRUB	2 GAL. CONTAINER	PH1
10	SPIREA	SPIREA JAPONICA	SHRUB	2 GAL. CONTAINER	PH1
9	WICHITA BLUE JUNIPER	JUNIPERUS SCOPULORUM 'WICHITA BLUE'	SHRUB	5' HEIGHT	PH1
42	YUCCA	YUCCA FILAMENTOSA	SHRUB	2 GAL. CONTAINER	PH1
253					
<b>BOULEVARD TREES</b>					
5	AMERICAN LINDEN	TILIA AMERICANA	DECIDUOUS TREE	2" B & B	PH1
5					