

RESOLUTION 10578

A RESOLUTION BY THE CITY COMMISSION OF THE CITY OF GREAT FALLS, MONTANA, TO EXTEND THE BOUNDARIES OF THE CITY OF GREAT FALLS TO INCLUDE LOTS 8-10 AND 13-15 OF BEEBE TRACTS, SECTION 9, T20N, R4E, P.M.M. CASCADE COUNTY, MONTANA, IN ACCORDANCE WITH THE PROVISION OF SECTION 7-2-4601, MONTANA CODE ANNOTATED.

* * * * *

WHEREAS, the City of Great Falls is a city incorporated under the laws of the State of Montana, and having a population of more than ten thousand (10,000) is a city of the first class; and

WHEREAS, there is contiguous to said City, but without the boundaries thereof, certain tracts of land situated in the County of Cascade, State of Montana, and described as follows:

Lots 8-10 and 13-15 of Beebe Tracts, Section 9, T20N, R4E, P.M.M., Cascade County, Montana;

all as shown on the map attached hereto marked "Exhibit A", and by this reference made a part hereof; and

WHEREAS, Section 7-2-4601, Montana Code Annotated, provides that whenever the owner of real property contiguous to any incorporated city of the first class petition to have said property made a part of the municipal corporation, such land may be embraced within the corporate limits thereof and the boundaries of such city of the first class extended so as to include the same; and

WHEREAS, 46th Street LLC, the property owner of the hereinabove described property has submitted a petition to have the subject property annexed to the City of Great Falls; and

WHEREAS, the Great Falls Planning Advisory Board/Zoning Commission conducted a public hearing on April 22, 2025, to consider said annexation, assignment of zoning of Planned Unit Development (PUD), and preliminary plat, and, at the conclusion of said hearing, passed a motion recommending the City Commission annex, assign said zoning, and approve the preliminary plat to the property legally described as Lots 8-10 and 13-15 of Beebe Tracts, Section 9, T20N, R4E, P.M.M., Cascade County, Montana; and,

WHEREAS, the City Commission finds that it is to the best interest of the City of Great Falls and its inhabitants to proceed with the incorporation of said territory into the City of Great Falls; and

WHEREAS, the City Commission adopted Resolution 10388 to authorize and direct City staff to update the appropriate boundaries of Neighborhood Council District 4 to include the subject properties; and

WHEREAS, all of the proceedings herein have been conducted in strict compliance with and in conformity to the laws of the Montana Code Annotated, Title 7, Chapter 2, Part 46, Annexation by Petition, and all conditions, acts, and actions required to be performed precedent to and in the passage and adoption of this resolution have been properly and legally done, and performed.

NOW, THEREFORE, BE IT RESOLVED BY THE CITY COMMISSION OF THE CITY OF GREAT FALLS, MONTANA:

That the boundaries of the City of Great Falls, Montana, be, and the same are hereby extended so as to embrace and include within the corporate limits of said city, all of the land hereinabove described, included as Lots 8-10 and 13-15 of Beebe Tracts, Section 9, T20N, R4E, P.M.M., Cascade County, Montana; as shown on attached "Exhibit A."

BE IT FURTHER RESOLVED BY THE CITY COMMISSION OF THE CITY OF GREAT FALLS, MONTANA:

That the Cascade County Clerk and Recorder is hereby authorized and directed to change the appropriate boundaries of the City of Great Falls, Montana, to include said tract of land; and

That this Resolution shall become effective from and after the date of the filing of said document in the office of the Cascade County Clerk and Recorder.

PASSED AND ADOPTED by the City Commission of the City of Great Falls, Montana, on this 3rd day of June, 2025.

Cory Reeves, Mayor

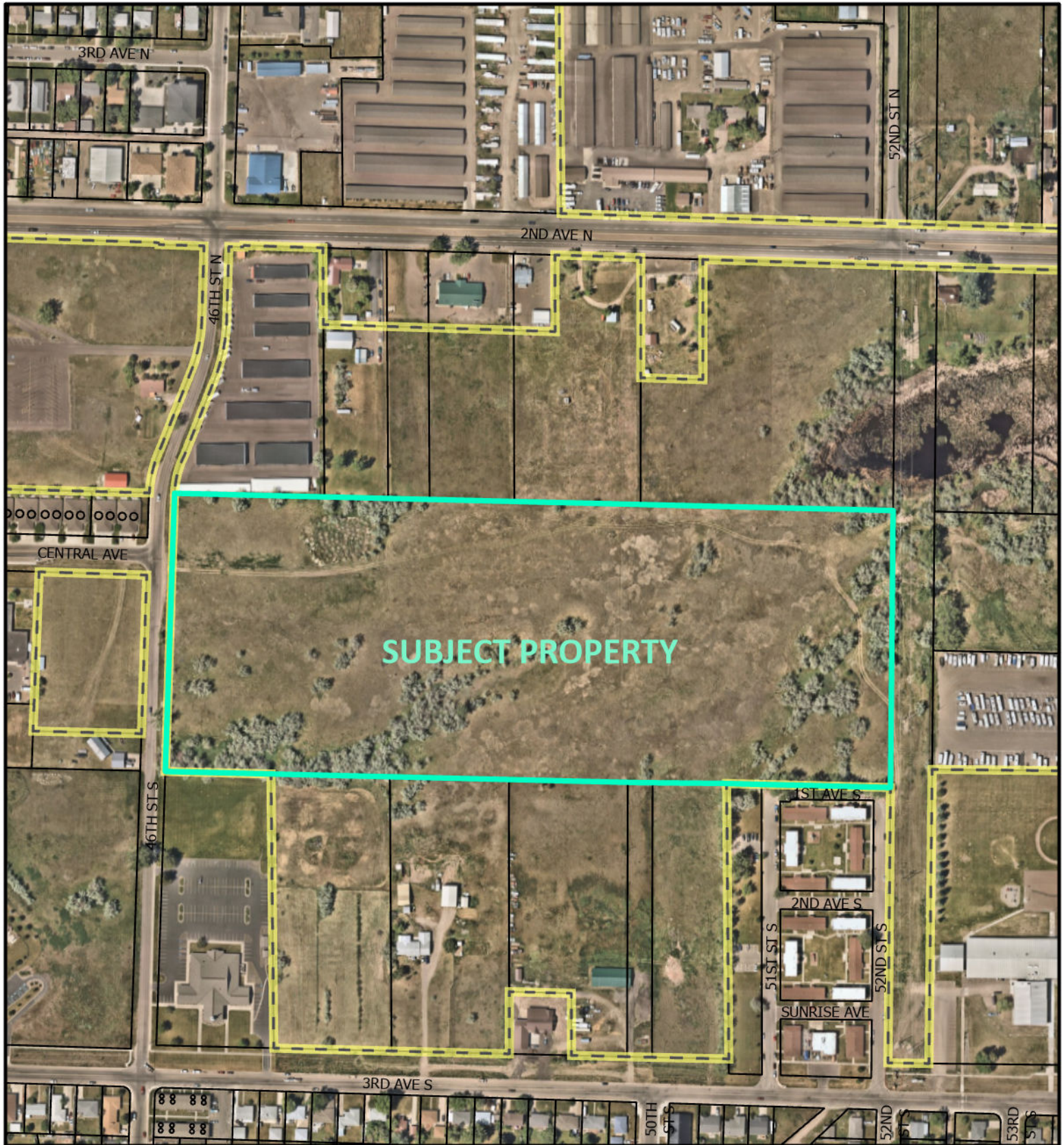
ATTEST:

Lisa Kunz, City Clerk

(SEAL OF CITY)

APPROVED FOR LEGAL CONTENT:

David Dennis, City Attorney



Resolution 10578 - Exhibit A



Lots 8-10, 13-15
of Beebe Tracts

--- City Limit
□ Parcels



0 150 300 600
Feet