

RESOLUTION 10320

A RESOLUTION BY THE CITY COMMISSION OF THE CITY OF GREAT FALLS, MONTANA, TO EXTEND THE BOUNDARIES OF THE CITY OF GREAT FALLS TO INCLUDE LOTS 4-6, BLOCK 10 OF FINLAY'S SUPPLEMENT TO PROSPECT PARK ADDITION AND THE ADJOINING RIGHT OF WAY OF 15TH STREET SOUTH AND 22ND ALLEY SOUTH LOCATED IN THE S1/2 SW1/4 OF SECTION 18, TOWNSHIP 20 NORTH, RANGE 4 EAST, P.M.MT, CASCADE COUNTY, MONTANA, IN ACCORDANCE WITH THE PROVISION OF SECTION 7-2-4601, MONTANA CODE ANNOTATED.

* * * * *

WHEREAS, the City of Great Falls is a city incorporated under the laws of the State of Montana, and having a population of more than ten thousand (10,000) is a city of the first class; and

WHEREAS, there is contiguous to said City, but without the boundaries thereof, a certain tract of land situated in the County of Cascade, State of Montana, and described as follows:

Lots 4-6, Block 10 of Finlay's Supplement to Prospect Park Addition, and the adjoining right-of-way of 15th Street South and 22nd Alley South located in the S1/2 SW1/4 Section 18, T20N, R4E PMM, Cascade County, Montana;

all as shown on the map attached hereto marked Attachment "A", and by this reference made a part hereof; and

WHEREAS, Section 7-2-4601, Montana Code Annotated, provides that whenever the owners of real property contiguous to any incorporated city of the first class petition to have said property made a part of the municipal corporation, such lands may be embraced

within the corporate limits thereof and the boundaries of such city of the first class extended so as to include the same; and

WHEREAS, Travis Manus, the owner of the hereinabove described properties have submitted a petition to have the subject properties annexed to the City of Great Falls; and

WHEREAS, the City Commission finds that it is to the best interest of the City of Great Falls and its inhabitants to proceed with the incorporation of said territory into the City of Great Falls; and

WHEREAS, all of the proceedings herein have been conducted in strict compliance with and in conformity to the laws of the Montana Code Annotated, Title 7, Chapter 2, Part 46, Annexation by Petition, and all conditions, acts, and actions required to be performed precedent to and in the passage and adoption of this resolution have been properly and legally done, and performed.

NOW, THEREFORE, BE IT RESOLVED BY THE CITY COMMISSION OF THE CITY OF GREAT FALLS, MONTANA:

That the boundaries of the City of Great Falls, Montana, be, and the same are hereby extended so as to embrace and include within the corporate limits of said city, all of the land hereinabove described, included as: “Lots 4-6, Block 10 of Finlay’s Supplement to Prospect Park Addition, and the adjoining right-of-way of 15th Street South and 22nd Alley South located in the S1/2 SW1/4 Section 18, T20N, R4E PMM, Cascade County, Montana” as shown on attached Attachment “A.”

BE IT FURTHER RESOLVED BY THE CITY COMMISSION OF THE CITY OF GREAT FALLS, MONTANA:

That the Cascade County Clerk and Recorder is hereby authorized and directed to change the appropriate boundaries of the City of Great Falls, Montana, to include said tract of land; and

That this Resolution shall become effective from and after the date of the filing of said document in the office of the Cascade County Clerk and Recorder.

PASSED AND ADOPTED by the City Commission of the City of Great Falls, Montana, on this 5th day of November, 2019.

Bob Kelly, Mayor

ATTEST:

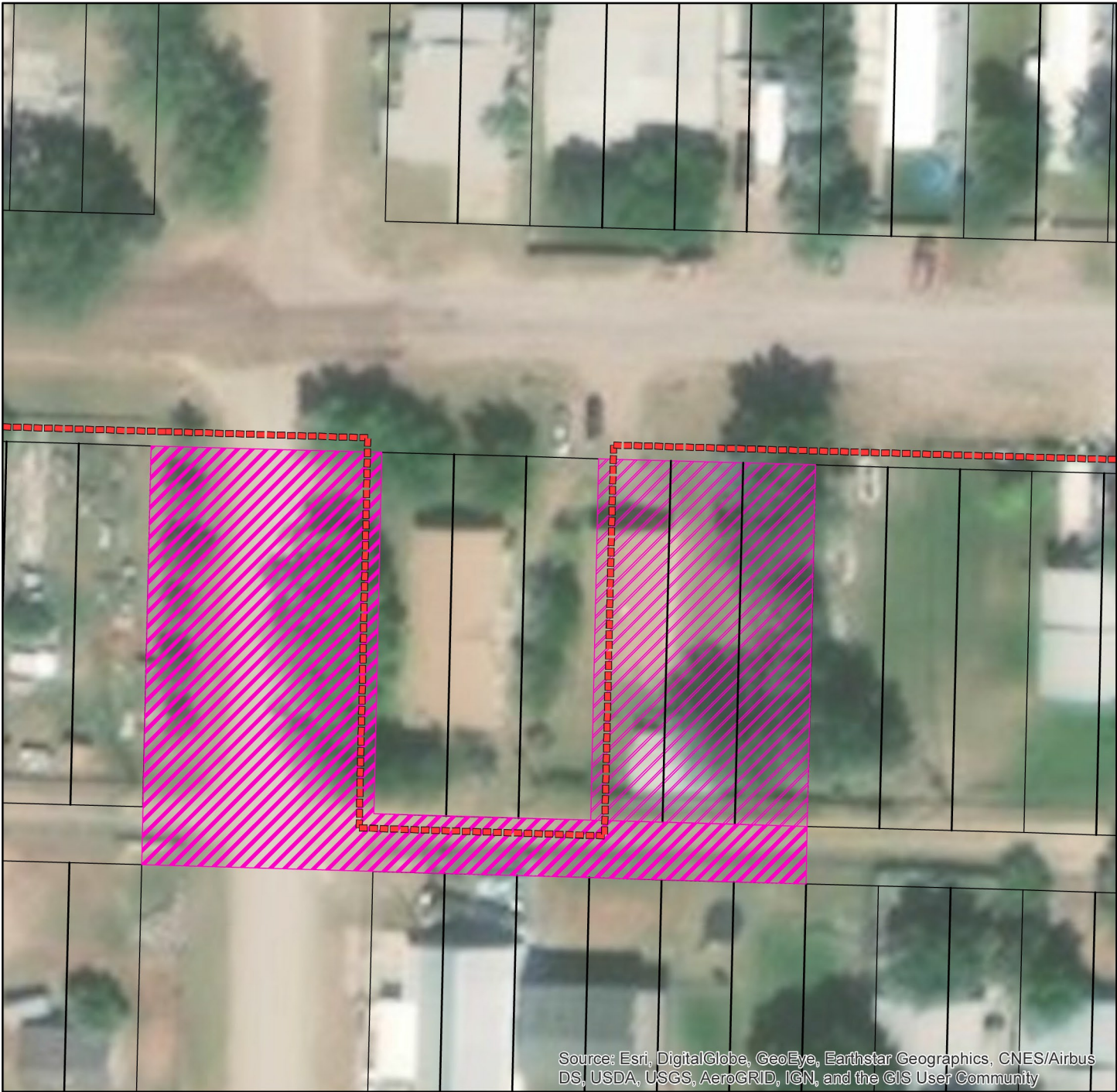
Darcy Dea, Deputy City Clerk

(SEAL OF CITY)

APPROVED FOR LEGAL CONTENT:

Sara R. Sexe, City Attorney

Resolution 10320 - Exhibit A



Source: Esri, DigitalGlobe, GeoEye, Earthstar Geographics, CNES/Airbus DS, USDA, USGS, AeroGRID, IGN, and the GIS User Community

 Resolution 10320

