

**RESOLUTION 10265**

**A RESOLUTION BY THE CITY COMMISSION OF THE CITY OF GREAT FALLS, MONTANA, TO EXTEND THE BOUNDARIES OF THE CITY OF GREAT FALLS TO INCLUDE LOTS 1-6, BLOCK 4 OF MERIWETHER CROSSING A SUBDIVISION OF LOTS 4B AND 4C OF THE CORRECTION OF AN AMENDED PLAT OF LOT 4 OF THE MEDICAL TECH PARK MINOR SUBDIVISION LOCATED IN THE SW1/4 SE1/4 SECTION 18, TOWNSHIP 20 NORTH, RANGE 4 EAST, PMM, CASCADE COUNTY, MONTANA IN ACCORDANCE WITH THE PROVISION OF MONT. CODE ANN, SECTION 7-2-4601.**

\* \* \* \* \*

**WHEREAS**, the City of Great Falls is a city incorporated under the laws of the State of Montana, and having a population of more than ten thousand (10,000) is a city of the first class; and

**WHEREAS**, there is contiguous to said City, but without the boundaries thereof, a certain tract of land and right-of-way situated in the County of Cascade, State of Montana, and described as follows:

Lots 1-6, Block 4 of Meriwether Crossing a Subdivision of Lots 4B and 4C of the Correction of an Amended Plat of Lot 4 of the Medical Tech Park Minor Subdivision located in the SW1/4 SE1/4 Section 18, Township 20 North, Range 4 East, PMM, Cascade County, Montana

all as shown on the map attached hereto marked Attachment "A", and by this reference made a part hereof; and

**WHEREAS**, Mont. Code Ann. Section 7-2-4601, provides that whenever the owners of real property contiguous to any incorporated city of the first class petition to have said property made a part of the municipal corporation, such lands may be embraced

within the corporate limits thereof and the boundaries of such city of the first class extended so as to include the same; and

**WHEREAS**, NWGF Development LLC, the owner, of the hereinabove described property has submitted a petition to have the subject property annexed to the City of Great Falls; and

**WHEREAS**, the City Commission finds that it is to the best interest of the City of Great Falls and its inhabitants to proceed with the incorporation of said territory into the City of Great Falls; and

**WHEREAS**, all of the proceedings herein have been conducted in strict compliance with and in conformity to the laws of the Montana Code Annotated, Title 7, Chapter 2, Part 46, Annexation by Petition, and all conditions, acts, and actions required to be performed precedent to and in the passage and adoption of this resolution have been properly and legally done, and performed.

**NOW, THEREFORE, BE IT RESOLVED BY THE CITY COMMISSION OF THE CITY OF GREAT FALLS, MONTANA:**

That the boundaries of the City of Great Falls, Montana, be, and the same are hereby extended so as to embrace and include within the corporate limits of said city, all of the land hereinabove described, included as: "Lots 1-6, Block 4 of Meriwether Crossing a Subdivision of Lots 4B and 4C of the Correction of an Amended Plat of Lot 4 of the Medical Tech Park Minor Subdivision located in the SW1/4 SE1/4 Section 18, Township 20 North, Range 4 East, PMM, Cascade County, Montana" as shown on Attachment "A."

**BE IT FURTHER RESOLVED BY THE CITY COMMISSION OF THE CITY OF GREAT FALLS, MONTANA:**

That the Cascade County Clerk and Recorder is hereby authorized and directed to change the appropriate boundaries of the City of Great Falls, Montana, to include said tract of land and right-of-way; and

That this Resolution shall become effective from and after the date of the filing of said document in the office of the Cascade County Clerk and Recorder.

PASSED AND ADOPTED by the City Commission of the City of Great Falls, Montana, on this 16th day of October, 2018.

---

Bob Kelly, Mayor

ATTEST:

---

Lisa Kunz, City Clerk

(SEAL OF CITY)

APPROVED FOR LEGAL CONTENT:

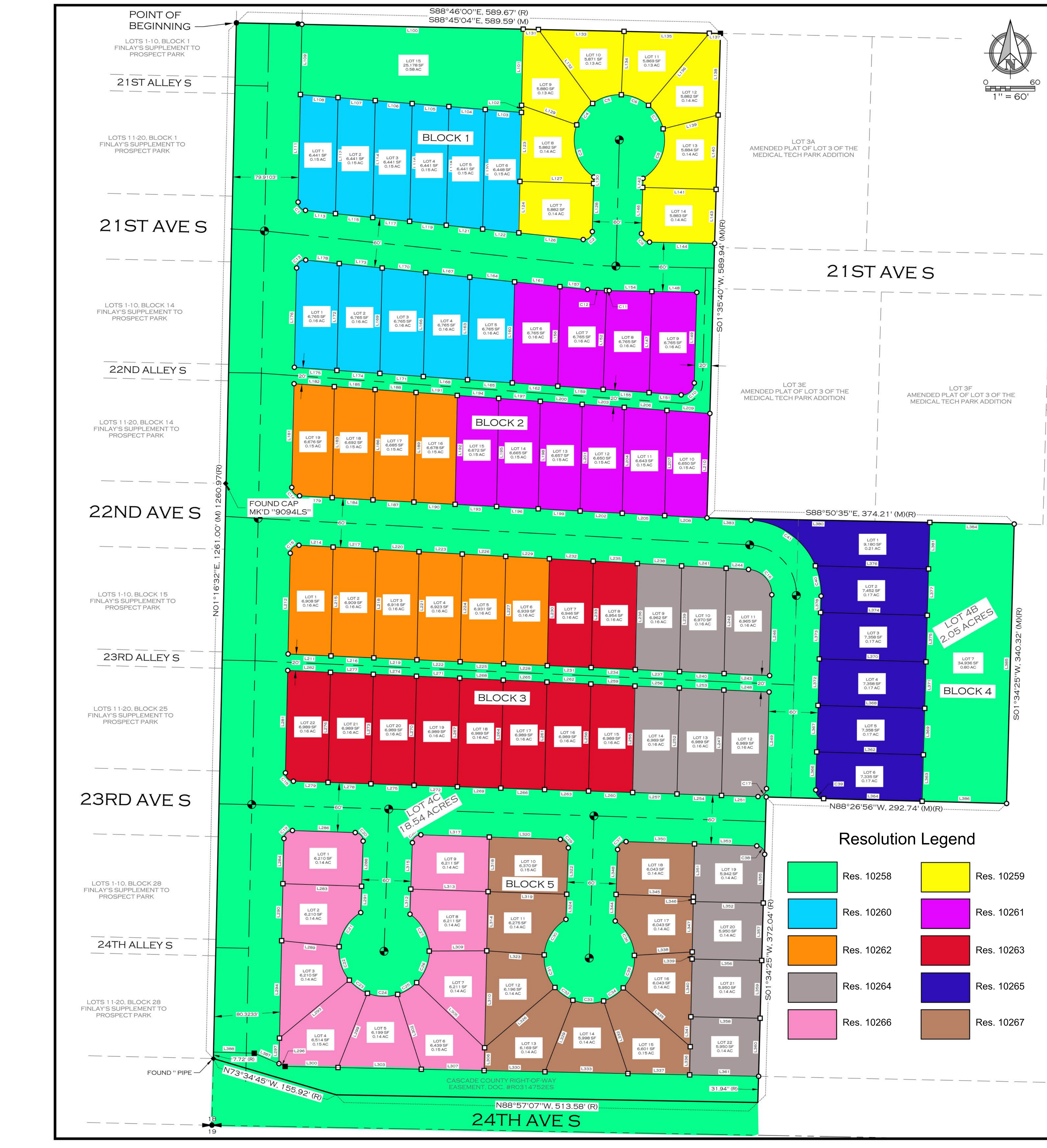
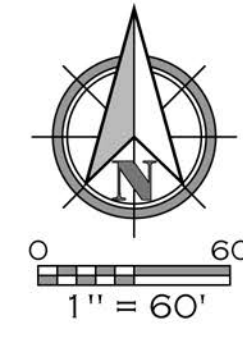
---

Sara R. Sexe, City Attorney



# THE PLAT OF MERIWETHER CROSSING

AN ADDITION TO THE CITY OF GREAT FALLS, MONTANA  
BEING LOTS 4B AND 4C OF THE CORRECTION OF THE AMENDED PLAT  
OF LOT 4 OF THE MEDICAL TECH PARK AND LOCATED IN THE SW 1/4  
SE 1/4 OF SECTION 18, TOWNSHIP 20 NORTH, RANGE 4 EAST, PRINCIPAL  
MERIDIAN MONTANA, CASCADE COUNTY, MONTANA



LINE TABLE			LINE TABLE			LINE TABLE			LINE TABLE		
LINE #	DIRECTION	LENGTH	LINE #	DIRECTION	LENGTH	LINE #	DIRECTION	LENGTH	LINE #	DIRECTION	LENGTH
L100	S88°46'00"E	589.67'	L134	S02°28'33"W	77.22	L170	S84°02'01"E	53.25	L204	S01°06'39"W	129.02
L101	S01°14'00"W	92.75	L135	S88°45'04"E	103.85	L171	N85°55'04"W	53.14	L205	N86°54'48"W	51.70
L102	S01°14'00"W	8.61	L136	S40°09'12"W	114.87	L172	N01°16'20"E	130.06	L206	S85°55'04"E	51.74
L103	N85°22'01"W	44.21	L137	S88°45'04"E	13.55	L173	S84°02'01"E	52.84	L207	S01°06'39"W	128.12
L104	N85°22'01"W	44.48	L138	S01°35'40"W	99.29	L174	N85°55'04"W	52.42	L208	N86°54'48"W	51.59
L105	N85°22'01"W	44.81	L139	S75°52'23"W	69.07	L175	N85°55'04"W	51.93	L209	N85°55'04"E	52.69
L106	N85°22'01"W	45.14	L140	S01°35'40"W	90.65	L176	N01°16'20"E	120.92	L210	S01°35'15"W	127.17
L107	N85°22'01"W	45.48	L141	N88°26'47"W	89.39	L177	S84°02'01"E	41.19	L211	N87°26'05"W	52.40
L108	N85°22'01"W	45.96	L142	N01°33'13"E	11.02	L178	N86°54'48"W	39.91	L212	N01°16'20"E	122.69
L109	N01°14'52"E	85.42	L143	S01°35'40"W	65.77	L179	N01°16'20"E	126.33	L213	S86°54'48"E	41.72
L110	N01°14'52"E	131.04	L144	N88°50'38"W	79.27	L180	S85°55'04"E	49.25	L214	S01°06'46"W	132.55
L111	S01°14'52"W	141.33	L145	N01°33'13"E	56.32	L181	S01°06'39"W	135.17	L215	N87°26'05"W	52.23
L112	N84°00'56"W	36.83	L146	N01°35'40"E	123.22	L182	N86°54'48"W	49.69	L216	N87°26'05"W	52.25
L113	S01°14'52"W	142.41	L147	N84°00'56"W	44.85	L183	S85°55'04"E	49.73	L217	S86°54'48"E	52.25
L114	N84°00'56"W	45.56	L148	S88°26'47"E	89.66	L184	S01°06'39"W	134.31	L218	S86°54'48"E	52.48
L115	S01°14'52"W	143.48	L149	S01°35'40"W	110.35	L185	S85°55'04"E	50.85	L219	S86°54'48"E	52.49
L116	S01°14'52"W	45.22	L150	N02°00'11"E	120.38	L186	S85°55'04"E	50.00	L220	S86°54'48"E	52.49
L117	S01°14'52"W	144.54	L151	S88°50'38"E	52.04	L187	N86°54'48"W	49.97	L221	S01°06'46"W	131.59
L118	N84°00'56"W	44.89	L152	N85°55'04"W	56.02	L188	S85°55'04"E	50.24	L222	N87°26'05"W	52.72
L119	S01°14'52"W	145.59	L153	N01°16'20"E	121.17	L189	S85°55'04"E	50.28	L223	S86°54'48"E	52.74
L120	N84°00'56"W	44.85	L154	S84°02'01"E	33.78	L190	S85°55'04"E	50.28	L224	S01°06'46"W	131.11
L121	N84°00'56"W	44.85	L155	S84°02'01"E	33.78	L191	S85°55'04"E	50.28	L225	N87°26'05"W	52.98
L122	N84°00'56"W	44.28	L156	N01°16'20"E	121.17	L192	N86°54'48"W	50.52	L226	S86°54'48"E	52.99
L123	S01°14'52"W	84.07	L157	S84°02'01"E	33.78	L193	N86°54'48"W	50.52	L227	S01°06'46"W	130.63
L124	S01°14'52"W	62.56	L158	N85°55'04"W	55.47	L194	N86°54'48"W	50.56	L228	N87°26'05"W	53.23
L125	N84°00'56"W	78.79	L159	N85°55'04"W	55.47	L195	S01°06'39"W	131.68	L229	N87°26'05"W	53.25
L126	S88°26'47"E	89.66	L160	N01°16'20"E	123.00	L196	S85°55'04"E	50.81	L230	S01°06'46"W	130.15
L127	S01°33'13"W	98.68	L161	S84°02'01"E	55.60	L197	S85°55'04"E	50.85	L231	N87°26'05"W	53.49
L128	S70°33'06"E	71.27	L162	S84°02'01"E	54.78	L198	S01°06'39"W	130.80	L232	S86°54'48"E	53.50
L129	S01°33'13"W	7.79	L163	N85°55'04"W	54.66	L199	N86°54'48"W	51.10	L233	S01°06'46"W	129.66
L130	S88°45'04"E	104.30	L164	N01°16'20"E	126.58	L200	S85°55'04"E	51.14	L234	N87°26'05"W	53.75
L131	S88°45'04"E	104.30	L165	S84°02'01"E	54.00	L201	S01°06'39"W	129.91	L235	S86°54'48"E	53.77
L132	S88°45'04"E	104.30	L166	N01°16'20"E	126.58	L202	N86°54'48"W	51.40	L236	S86°54'48"E	53.77
L133	S88°45'04"E	104.30	L167	S84°02'01"E	54.00	L203	S85°55'04"E	51.44	L237	S86°54'48"E	53.77
L134	S88°45'04"E	104.30	L168	N85°55'04"W	53.89	L204	S85°55'04"E	51.44	L238	S86°54'48"E	53.77
L135	S88°45'04"E	104.30	L169	N01°16'20"E	128.33	L205	S85°55'04"E	51.44	L239	S86°54'48"E	53.77
L136	S88°45'04"E	104.30	L170	S84°02'01"E	53.25	L206	S85°55'04"E	51.44	L240	S86°54'48"E	53.77
L137	S88°45'04"E	103.85	L171	N85°55'04"W	53.14	L207	N86°54'48"W	51.59	L241	S86°54'48"E	53.77
L138	S40°09'12"W	114.87	L172	N01°16'20"E	130.06	L208	N86°54'48"W	51.59	L242	S86°54'48"E	53.77
L139	S88°45'04"E	13.55	L173	S84°02'01"E	52.84	L209	N85°55'04"E	52.69	L243	S86°54'48"E	53.77
L140	S01°35'40"W	99.29	L174	N85°55'04"W	52.42	L210	S85°55'04"E	52.69	L244	S86°54'48"E	53.77
L141	S75°52'23"W	69.07	L175	N85°55'04"W	51.93	L211	S01°35'15"W	127.17	L245	S86°54'48"E	53.77
L142	S01°35'40"W	90.65	L176	N01°16'20"E	120.92	L212	N87°26'05"W	52.40	L246	S86°54'48"E	53.77
L143	N88°26'47"W	89.39	L177	S84°02'01"E	41.19	L213	S86°54'48"E	41.72	L247	S86°54'48"E	53.77
L144	N01°33'13"E	11.02	L178	N86°54'48"W	39.91	L214	S01°06'46"W	132.55	L248	S86°54'48"E	53.77
L145	S01°35'40"W	65.77	L179	N01°16'20"E	126.33	L215	N87°26'05"W	52.23	L249	S86°54'48"E	53.77
L146	N88°50'38"W	79.27	L180	S85°55'04"E	49.25	L216	S01°06'46"W	132.55	L250	S86°54'48"E	53.77
L147	N01°33'13"E	56.32	L181	S01°06'39"W	135.17	L217	N87°26'05"W	52.23	L251	S86°54'48"E	53.77
L148	N84°00'56"W	44.85	L182	N86°54'48"W	49.69	L218	S86°54'48"E	52.25	L252	S86°54'48"E	53.77
L149	S88°26'47"E	89.66	L183	S85°55'04"E	49.73	L219	S86°54'48"E	52.25	L253	S86°54'48"E	53.77
L150	S01°35'40"W	110.35	L184	S01°06'39"W	134.31	L220	S86°54'48"E	52.48	L254	S86°54'48"E	53.77
L151	N02°00'11"E	120.38	L185	S85°55'04"E	49.73	L221	S86°54'48"E	52.49	L255	S86°54'48"E	53.77
L152	S88°50'38"E	52.04	L186	S01°06'39"W	134.31	L222	S86°54'48"E	52.49	L256	S86°54'48"E	53.77
L153	N85°55'04"W	56.02	L187	N86°54'48"W	49.97	L223	S86°54'48"E	52.72	L257	S86°54'48"E	53.77
L154	N01°16'20"E	121.17	L188	S85°55'04"E	50.00	L224	S86°54'48"E	52.74	L258	S86°54'48"E	53.77
L155	S84°02'01"E	33.78	L189	S85°55'04"E	50.24	L225	S86°54'48"E	52.74	L259	S86°54'48"E	53.77
L156	N01°16'20"E	121.17	L190	S01°06'39"W	133.44	L226	S86°54'48"E	52.99	L260	S86°54'48"E	53.77
L157	S84°02'01"E	33.78	L191	N86°54'48"W	50.28	L227	S86°54'48"E	52.99	L261	S86°54'48"E	53.77
L158	N85°55'04"W	55.47	L192	S85°55'04"E	50.28	L228	S86°54'48"E	52.99	L262	S86°54'48"E	53.77
L159	N85°55'04"W	55.47	L193	S84°02'01"E	33.78	L229	S86°54'48"E	52.99	L263	S86°54'48"E	53.77
L160	N01°16'20"E	123.00	L194	N86°54'48"W	50.52	L230	S86°54'48"E	52.99	L264	S86°54'48"E	53.77
L161	S84°02'01"E	55.60	L195	N86°54'48"W	50.56	L231	S86°54'48"E	52.99	L265	S86°54'48"E	53.77
L162	S84°02'01"E	54.78	L196	S85°55'04"E	50.81	L232	S86°54'48"E	52.99	L266	S86°54'48"E	53.77
L163	N01°16'20"E	124.80	L197	S85°55'04"E	50.85	L233	S86°54'48"E	52.99	L267	S86°54'48"E	53.77
L164	S84°02'01"E	54.78	L198	S01°06'39"W	130.80	L234	S86°54'48"E	52.99	L268	S86°54'48"E	53.77
L165	N85°55'04"W	54.66	L199	N86°54'48"W	51.10	L235	S86°54'48"E	52.99	L269	S86°54'48"E	53.77
L166	N01°16'20"E	126.58	L200	N86°54'48"W	51.14	L236	S86°54'48"E	52.99	L270	S86°54'48"E	53.77
L167	S84°02'01"E	54.00	L201	S01°06'39"W	129.91	L237	S86°54'48"E	52.99	L271	S86°54'48"E	53.77
L168	N85°55'04"W	53.89	L202	N86°54'48"W	51.40	L238	S86°54'48"E	52.99	L272	S86°54'48"E	53.77
L169	N01°16'20"E	128.33	L203	S85°55'04"E	51.44	L239	S86°54'48"E	52.99	L273	S86°54'48"E	53.77
L170	S84°02'01"E	53.25	L204	S85°55'04"E	51.44	L240	S86°54'48"E	52.99	L274	S86°54'48"E	53.77
L171	N85°55'04"W	53.14	L205	S85°55'04"E	51.44	L241	S86°54'48"E	52.99	L275	S86°54'48"E	53.77
L172	N01°16'20"E	130.06	L206	S85°55'04"E	51.44	L242	S86°54'48"E	52.99	L276	S86°54'48"E	53.77
L173	S84°02'01"E	52.84	L207	N86°54'48"W	51.59	L243	S86°54'48"E	52.99	L277	S86°54'48"E	53.77
L174	N85°55'04"W	52.42	L208	N86°54'48"W	51.59	L244	S86°54'48"E	52.99	L278	S86°54'48"E	53.77
L175	N85°55'04"W	51.93	L209	N85°55'04"E	52.69	L245	S86°54'48"E	52.99	L279	S86°54'48"E	53.77
L176	N01°16'20"E	120.92	L210	S85°55'04"E	52.69	L246	S86°54'48"E	52.99	L280	S86°54'48"E	53.77
L177	S84°02'01"E	41.19	L211	S01°35'15"W	127.17	L247	S86°54'48"E	52.99	L281	S86°54'48"E	53.77
L178	N86°54'48"W	39.91	L212	N87°26'05"W	52.40	L248	S86°54'48"E	52.99	L282	S86°54'48"E	53.77
L179	N01°16'20"E	126.33	L213	S86°54'48"E	41.72	L249	S86°54'48"E	52.99	L283	S86°54'48"E	53.77
L180	S85°55'04"E	49.25	L214	S01°06'46"W	132.55	L250	S86°54'48"E	52.99	L284	S86°54'48"E	53.77
L181	N01°16'20"E	126.33	L215	N87°26'05"W	52.23	L251	S86°54'48"E	52.99	L285	S86°54'48"E	53.77
L182	S85°55'04"E	49.25	L216	S01°06'46"W	132.55	L252	S86°54'48"E	52.99	L286	S86°54'48"E	53.77
L183	S01°06'39"W	135.17	L217	N87°26'05"W	52.23	L253	S86°54'48"E	52.99	L287	S86°54'48"E	53.77
L184	N86°54'48"W	49.69	L218	S86°54'48"E	52.25	L254	S86°54'48"E	52.99	L288	S86°54'48"E	53.77
L185	S85°55'04"E	49.73	L219	S86°54'48"E	52.25	L255	S86°54'48"E	52.99	L289	S86°54'48"E	53.77
L186	S01°06'39"W	134.31	L220	S86°54'48"E	52.48	L256	S86°54'48"E	52.99	L290	S86°54'48"E	53.77
L187	N86°54'48"W	49.97	L221	S86°54'48"E	52.49	L257	S86°54'48"E	52.99	L291	S86°54'48"E	53.77