

**RESOLUTION 10262**

**A RESOLUTION BY THE CITY COMMISSION OF THE CITY OF GREAT FALLS, MONTANA, TO EXTEND THE BOUNDARIES OF THE CITY OF GREAT FALLS TO INCLUDE LOTS 16-19, BLOCK 2 AND LOTS 1-6, BLOCK 3 OF MERIWETHER CROSSING A SUBDIVISION OF LOTS 4B AND 4C OF THE CORRECTION OF AN AMENDED PLAT OF LOT 4 OF THE MEDICAL TECH PARK MINOR SUBDIVISION LOCATED IN THE SW1/4 SE1/4 SECTION 18, TOWNSHIP 20 NORTH, RANGE 4 EAST, PMM, CASCADE COUNTY, MONTANA IN ACCORDANCE WITH THE PROVISION OF MONT. CODE ANN, SECTION 7-2-4601.**

\* \* \* \* \*

**WHEREAS**, the City of Great Falls is a city incorporated under the laws of the State of Montana, and having a population of more than ten thousand (10,000) is a city of the first class; and

**WHEREAS**, there is contiguous to said City, but without the boundaries thereof, a certain tract of land and right-of-way situated in the County of Cascade, State of Montana, and described as follows:

Lots 16-19, Block 2 and Lots 1-6, Block 3 of Meriwether Crossing a Subdivision of Lots 4B and 4C of the Correction of an Amended Plat of Lot 4 of the Medical Tech Park Minor Subdivision located in the SW1/4 SE1/4 Section 18, Township 20 North, Range 4 East, PMM, Cascade County, Montana

all as shown on the map attached hereto marked Attachment "A", and by this reference made a part hereof; and

**WHEREAS**, Mont. Code Ann. Section 7-2-4601, provides that whenever the owners of real property contiguous to any incorporated city of the first class petition to have said property made a part of the municipal corporation, such lands may be embraced

within the corporate limits thereof and the boundaries of such city of the first class extended so as to include the same; and

**WHEREAS**, NWGF Development LLC, the owner, of the hereinabove described property has submitted a petition to have the subject property annexed to the City of Great Falls; and

**WHEREAS**, the City Commission finds that it is to the best interest of the City of Great Falls and its inhabitants to proceed with the incorporation of said territory into the City of Great Falls; and

**WHEREAS**, all of the proceedings herein have been conducted in strict compliance with and in conformity to the laws of the Montana Code Annotated, Title 7, Chapter 2, Part 46, Annexation by Petition, and all conditions, acts, and actions required to be performed precedent to and in the passage and adoption of this resolution have been properly and legally done, and performed.

**NOW, THEREFORE, BE IT RESOLVED BY THE CITY COMMISSION OF THE CITY OF GREAT FALLS, MONTANA:**

That the boundaries of the City of Great Falls, Montana, be, and the same are hereby extended so as to embrace and include within the corporate limits of said city, all of the land hereinabove described, included as: “Lots 16-19, Block 2 and Lots 1-6, Block 3 of Meriwether Crossing a Subdivision of Lots 4B and 4C of the Correction of an Amended Plat of Lot 4 of the Medical Tech Park Minor Subdivision located in the SW1/4 SE1/4 Section 18, Township 20 North, Range 4 East, PMM, Cascade County, Montana” as shown on Attachment “A.”

**BE IT FURTHER RESOLVED BY THE CITY COMMISSION OF THE CITY OF GREAT FALLS, MONTANA:**

That the Cascade County Clerk and Recorder is hereby authorized and directed to change the appropriate boundaries of the City of Great Falls, Montana, to include said tract of land and right-of-way; and

That this Resolution shall become effective from and after the date of the filing of said document in the office of the Cascade County Clerk and Recorder.

PASSED AND ADOPTED by the City Commission of the City of Great Falls, Montana, on this 16th day of October, 2018.

---

Bob Kelly, Mayor

ATTEST:

---

Lisa Kunz, City Clerk

(SEAL OF CITY)

APPROVED FOR LEGAL CONTENT:

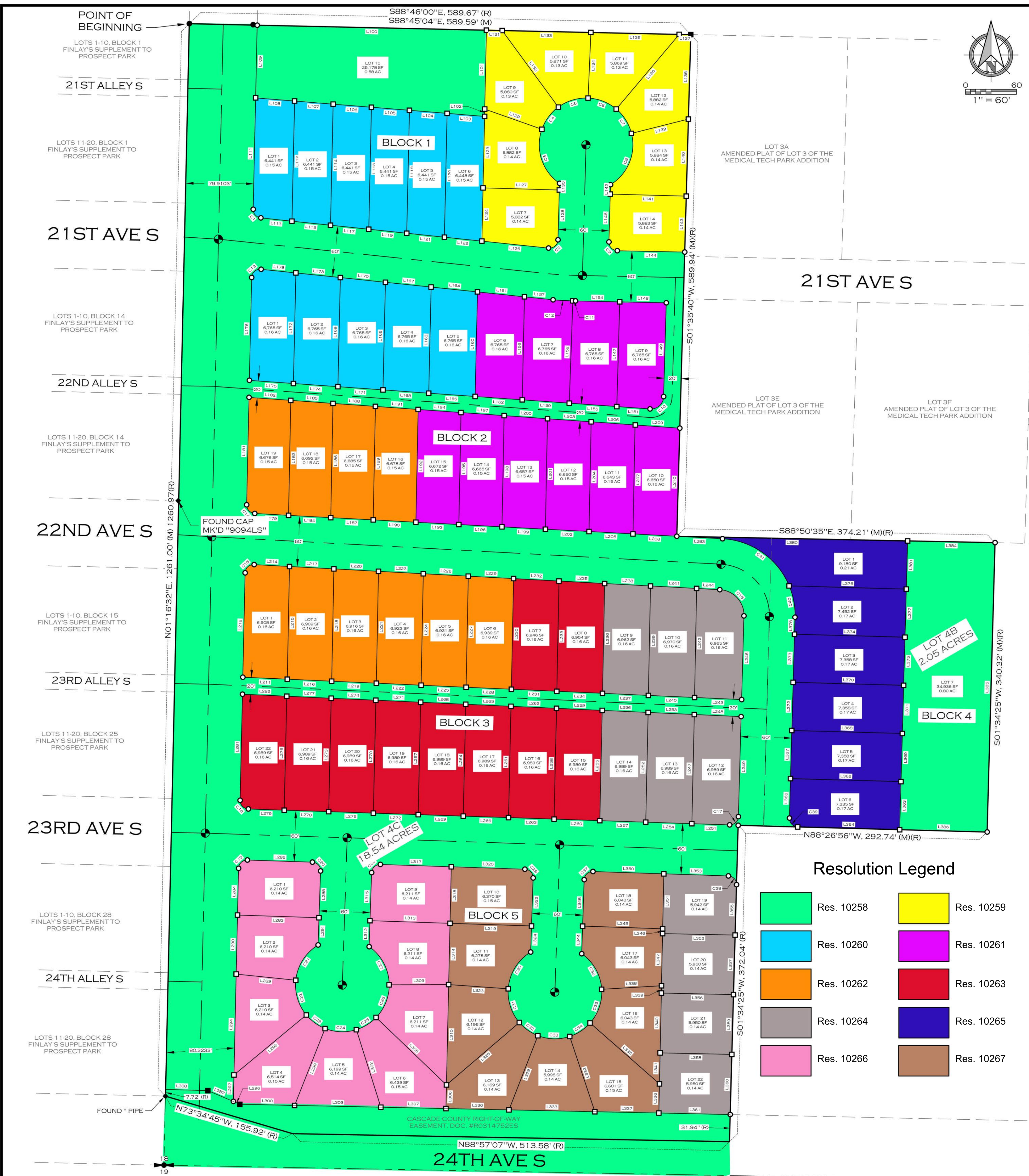
---

Sara R. Sexe, City Attorney

THE PLAT OF

# MERIWETHER CROSSING

AN ADDITION TO THE CITY OF GREAT FALLS, MONTANA  
 BEING LOTS 4B AND 4C OF THE CORRECTION OF THE AMENDED PLAT  
 OF LOT 4 OF THE MEDICAL TECH PARK AND LOCATED IN THE SW 1/4  
 SE 1/4 OF SECTION 18, TOWNSHIP 20 NORTH, RANGE 4 EAST, PRINCIPAL  
 MERIDIAN MONTANA, CASCADE COUNTY, MONTANA



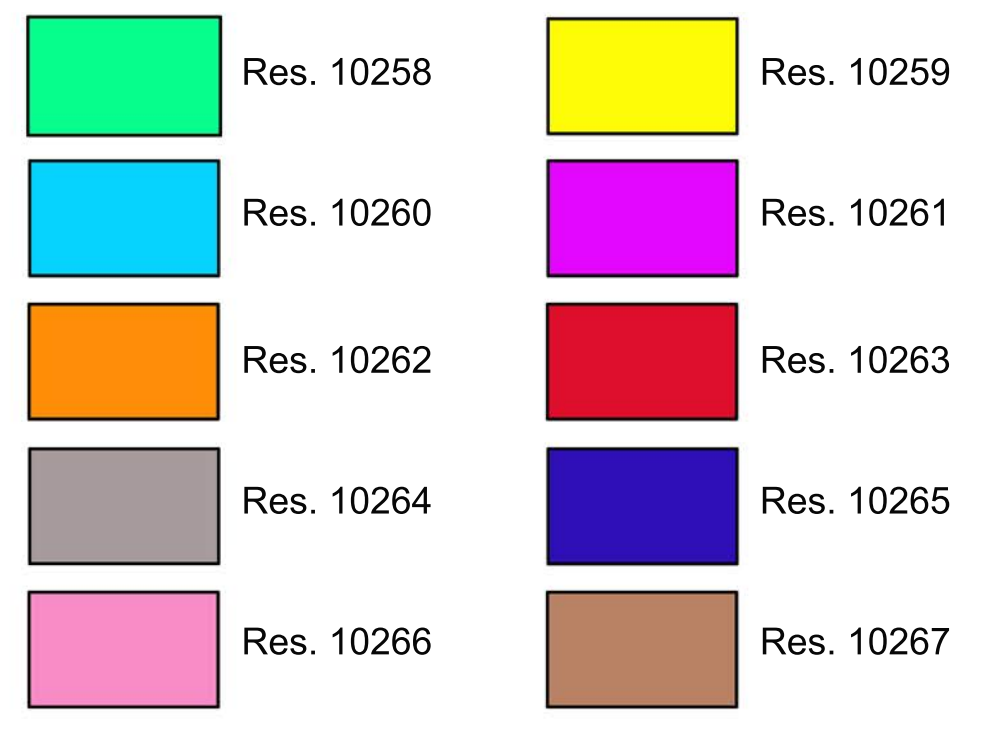
LINE TABLE			LINE TABLE			LINE TABLE			LINE TABLE		
LINE #	DIRECTION	LENGTH	LINE #	DIRECTION	LENGTH	LINE #	DIRECTION	LENGTH	LINE #	DIRECTION	LENGTH
L100	S88°46'00"E	589.67' (R)	L134	S02°28'33"W	77.22	L170	S84°02'01"E	53.25	L204	S01°06'39"W	129.02

CURVE TABLE			
CURVE #	RADIUS	LENGTH	DELTA
C1	10.00	14.88	086°15'48"

LINE TABLE			LINE TABLE			LINE TABLE			LINE TABLE		
LINE #	DIRECTION	LENGTH	LINE #	DIRECTION	LENGTH	LINE #	DIRECTION	LENGTH	LINE #	DIRECTION	LENGTH
L237	N87°26'05"W	54.02	L271	S87°26'05"E	52.77	L313	S88°06'13"E	94.17	L356	N88°48'07"W	84.83

### Resolution Legend

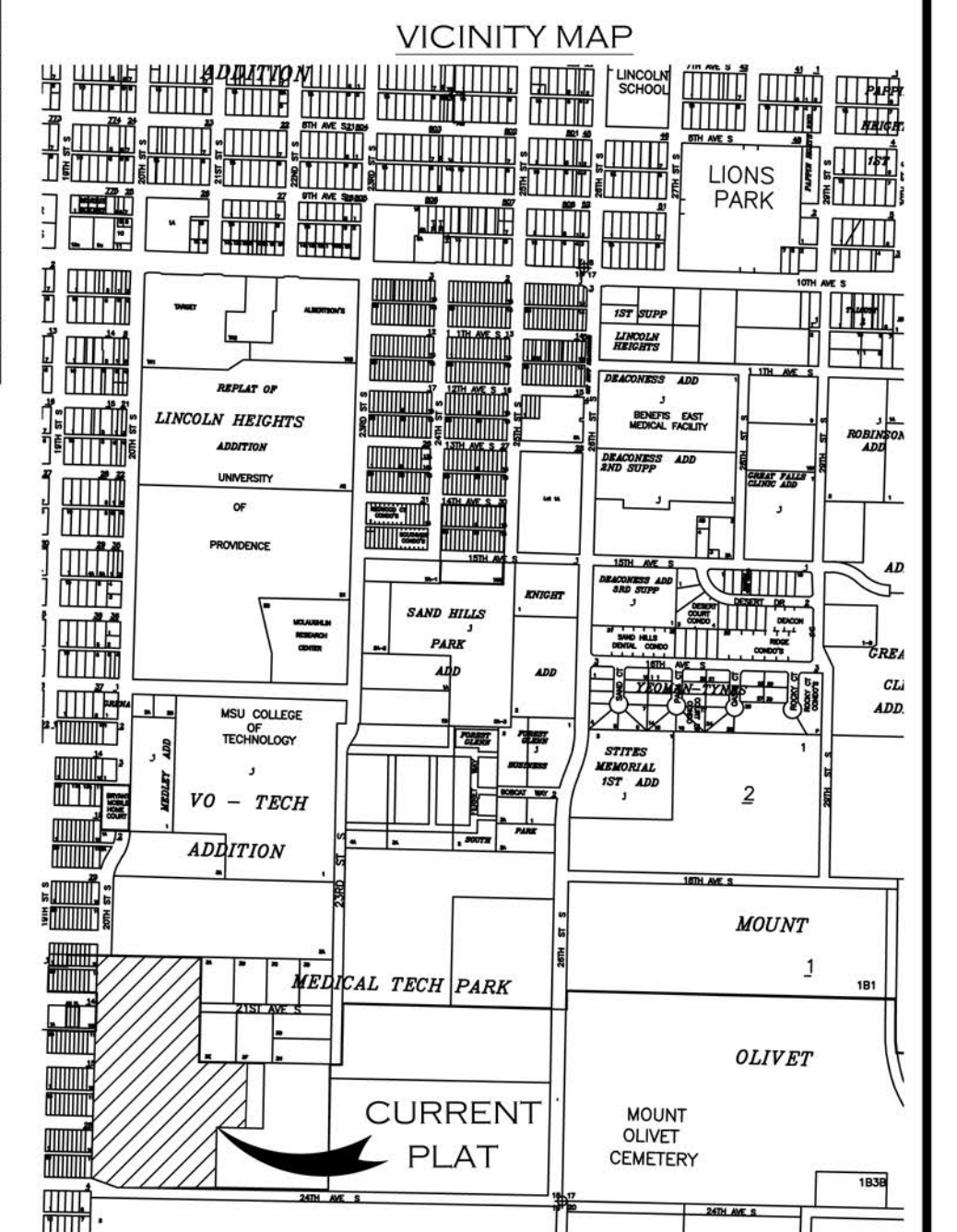


### LEGEND

- FOUND SOUTH 1/4 CORNER
- STREET MONUMENT
- SET 3/8" X 24" REBAR WITH 2" AC MK'D "SHAYLOR 19110"
- SET 5/8" X 24" REBAR WITH 1 1/2" YPC MK'D "SHAYLOR 19110"
- FOUND 5/8" REBAR
- FOUND YPC MK'D "15625LS"
- FOUND MONUMENT AS DESCRIBED
- PERIMETER BOUNDARY
- INTERIOR LOT BOUNDARY
- ROAD CENTERLINE
- OLD BOUNDARY
- SECTION LINE
- ADJACENT PROPERTY BOUNDARY
- RECORDED OR ADDITIVE RECORD - AMENDED PLAT OF LOT 4 OF THE MEDICAL TECH PARK MINOR SUBDIVISION (15625LS, 2017)
- ALUMINUM CAP
- YELLOW PLASTIC CAP
- MARKED

### AREA

LOTS: 13.97 ACRES  
 STREETS & ALLEYS: 7.07 ACRES  
 TOTAL SUBDIVISION AREA: 21.04 ACRES



**WOITH ENGINEERING, INC.**  
 ENGINEERS & SURVEYORS  
 P.O. BOX 7326, GREAT FALLS, MONTANA 59406

JOB NO. 1808  
 F.B.N.D.: G.P.S.  
 FILE: 1808PLAT.DWG  
 DRAWN: D.W.G.C.  
 DATE: 10/4/2018

**1**  
 OF  
**2**