

RESOLUTION 9742

A RESOLUTION BY THE CITY COMMISSION  
OF THE CITY OF GREAT FALLS, MONTANA,  
TO VACATE A DEDICATED CUL-DE-SAC (KNOWN AS 12<sup>TH</sup> AVENUE NORTH)  
LOCATED IN THE 15<sup>TH</sup> STREET BRIDGE ADDITION TO GREAT FALLS,  
IN ACCORDANCE WITH THE PROVISIONS OF  
SECTION 7-14-4114, MONTANA CODE ANNOTATED

\* \* \* \* \*

WHEREAS, there exists a platted, dedicated public roadway consisting of a sixty (60) foot strip of land and cul-de-sac located in the 15<sup>th</sup> Street Bridge Addition, more particularly described as follows:

A tract of land in the NW ¼ of Section 6, T20N, R4E, P.M.M. located between Lots 1 and 2 of the 15<sup>th</sup> Street Bridge Addition; and designated and identified in various documents of record as “a City Street”, said tract being more particularly described as follows:

Beginning at the centerline intersection of 10<sup>th</sup> Avenue North and 13<sup>th</sup> Street; thence S89°53'E, 430.17 feet to the centerline intersection of 10<sup>th</sup> Avenue north and 14<sup>th</sup> Street; thence North 525.08 feet along the abandoned centerline of 14<sup>th</sup> Street to the north boundary of the Old Chicago, Milwaukee, St. Paul, & Pacific Railroad; thence N82°20'W, 90.83 feet; thence North 207.03 feet; thence S82°19'E, 201.83 feet to the true point of beginning; thence 149.42 feet Northerly along a circular curve to the right with a radius of 60.0 feet; thence 17.91 feet Easterly along a circular curve to the left with a radius of 20.0 feet; thence S89°57' E, 107.55 feet; thence 31.42 feet Northerly along a circular curve to the left with a radius of 20.0 feet; thence S0°03'W, 14.10 feet; thence 1.40 feet Southerly along a circular curve to the right with a radius of 923.0 feet; thence S89°52'E, 2.0 feet; thence 86.53 feet Southerly along a circular curve to the right with a radius of 925.0 feet; thence 33.32 feet Northerly along a circular curve to the left with a radius of 20.0 feet; thence N89°57'W, 105.46 feet; thence 17.91 feet Southerly along a circular curve to the left with a radius of 20.0 feet; thence 146.56 feet Northerly along a circular curve to the right with a radius of 60.0 feet to the true point of beginning, containing 19,565 square feet and .449 acres.

all as shown on the map attached hereto marked Exhibit “A” and by this reference made a part hereof; and,

WHEREAS, for several years said cul-de-sac (not formerly constructed) was used as public access to the City Pulverizer Complex; and,

WHEREAS, upon vacation of said cul-de-sac, the abandoned right-of-way shall revert to and be consolidated with the adjacent Lots 1 and 2 of the 15<sup>th</sup> Street Bridge Addition.

WHEREAS, the City Commission of the City of Great Falls, Montana, duly and regularly passed and adopted on the 19th day of February, 2008, Resolution 9731 entitled:

A RESOLUTION OF INTENTION  
BY THE CITY COMMISSION OF THE CITY OF GREAT FALLS, MONTANA,  
TO VACATE A DEDICATED CUL-DE-SAC (KNOWN AS 12<sup>TH</sup> AVENUE NORTH)  
LOCATED IN THE 15<sup>TH</sup> STREET BRIDGE ADDITION TO GREAT FALLS,  
IN ACCORDANCE WITH THE PROVISIONS OF  
SECTION 7-14-4114, MONTANA CODE ANNOTATED, AND  
DIRECTING NOTICE TO BE GIVEN AS PROVIDED BY LAW

WHEREAS, the City Clerk of said City, forthwith caused notice of said Resolution 9731 to be:

- 1) published in the Great Falls Tribune, the newspaper published nearest the right-of-way proposed for vacation; and
- 2) posted in three public places, stating therein the time and place the City Commission shall hear all persons relative to said proposed vacation.

WHEREAS, a hearing was held by the City Commission of the City of Great Falls on the 6<sup>th</sup> day of May, 2008, at 7:00 P.M. in the Commission Chambers of the Great Falls Civic Center, where said Commission heard all persons relative to the proposed vacation of said cul-de-sac (known as 12<sup>th</sup> Avenue North)..

NOW, THEREFORE, BE IT RESOLVED BY THE COMMISSION OF THE CITY OF GREAT FALLS, MONTANA;

The cul-de-sac as dedicated within the 15<sup>th</sup> Street Bridge Addition to Great Falls is hereby vacated.

BE IT FURTHER RESOLVED BY SAID CITY COMMISSION that this Resolution shall become effective either thirty (30) days after its passage and approval or upon filing in the office of the Cascade County Clerk and Recorder, the amended plat consolidating the abandoned right-of-way with the adjacent Lots 1 and 2 of the 15<sup>th</sup> Street Bridge Addition, which ever event shall occur later.

PASSED AND ADOPTED by the City Commission of the City of Great Falls, Montana, on this 6<sup>th</sup> day of May, 2008.

\_\_\_\_\_  
Dona R. Stebbins, Mayor

ATTEST:

\_\_\_\_\_  
Lisa Kunz, City Clerk

(CITY SEAL)

APPROVED FOR LEGAL CONTENT:

\_\_\_\_\_  
David V. Gliko, City Attorney

State of Montana        )  
County of Cascade       :ss  
City of Great Falls     )

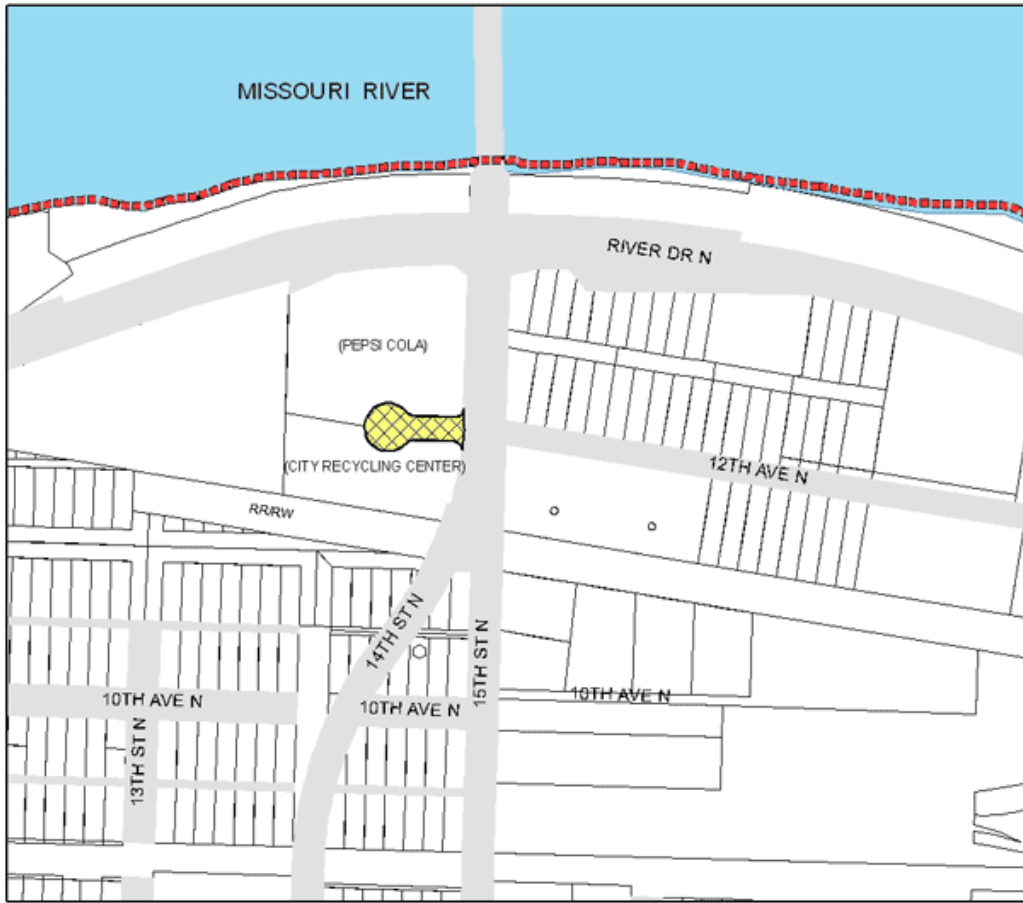
I, Lisa Kunz, City Clerk of the City of Great Falls, Montana, do hereby certify that the foregoing Resolution 9742 was placed on its final passage and passed by the Commission of the City of Great Falls, Montana, at a meeting thereof held on the 6<sup>th</sup> day of May, 2008.

IN WITNESS WHEREOF, I have hereunto set my hand and affixed the Seal of said City this 6<sup>th</sup> day of May, 2008.

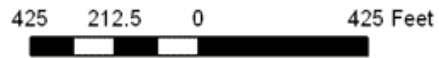
\_\_\_\_\_  
Lisa Kunz, City Clerk

(CITY SEAL)

# EXHIBIT "A" VICINITY MAP



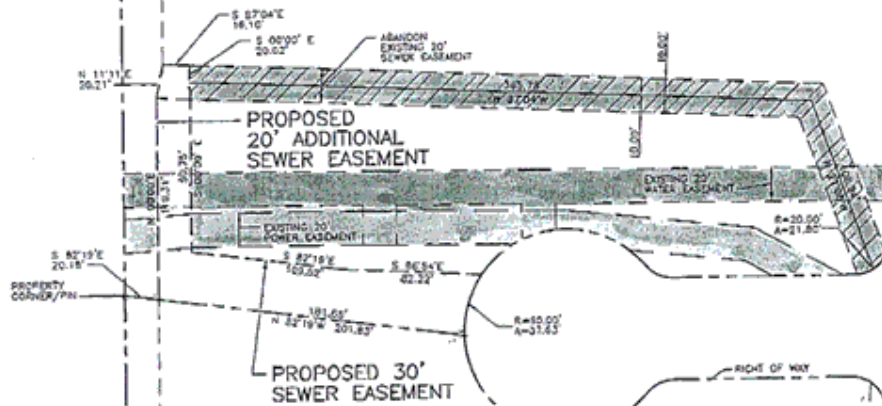
 RIGHT-OF-WAY PROPOSED TO BE VACATED



RIVER DRIVE NORTH

15TH STREET NORTH

LOT 1  
15TH STREET  
BRIDGE ADDITION



LOT 2  
15TH STREET  
BRIDGE ADDITION

14TH STREET NORTH

OLD C.M. ST. P.&P. RY.



**EXHIBIT A**

J:\2008\00-12\1\landdevelopment\121\DWG\00121PEPS\EASEMENTEXHIBIT.dwg, 05/15/2002 10:49:57 AM, TDH, TDH Great Falls