

RESOLUTION 9680

A RESOLUTION BY THE CITY COMMISSION OF THE CITY OF GREAT FALLS, MONTANA, TO EXTEND THE BOUNDARIES OF SAID CITY TO INCLUDE PINE HILL MINOR SUBDIVISION AND THE ABUTTING SEGMENT OF HUCKLEBERRY DRIVE, LOCATED IN THE SW1/4 OF SECTION 22, TOWNSHIP 20 NORTH, RANGE 3 EAST, P.M.M., CASCADE COUNTY, MONTANA, MORE PARTICULARLY DESCRIBED HEREINBELOW; ALL AS SHOWN ON THE MAP ATTACHED HERETO MARKED EXHIBIT "A" AND BY THIS REFERENCE MADE A PART HEREOF.

* * * * *

WHEREAS, the City of Great Falls is a city incorporated under the laws of the State of Montana, and having a population of more than ten thousand (10,000) is a city of the first class; and,

WHEREAS, there is contiguous to said City, but without the boundaries thereof, certain tracts or parcels of land situated in the County of Cascade, State of Montana, and described as follows:

- 1) The Plat of Pine Hill Minor Subdivision, located in the SW1/4 of Section 22, Township 20 North, Range 3 East, Cascade County, Montana, containing 8.746 acres; and
- 2) The segment of Huckleberry Drive abutting Pine Hill Minor Subdivision containing 0.92 acres, and

all as shown on the map attached hereto marked Exhibit "A" and by this reference made a part hereof and according to the Plat of Pine Hill Minor Subdivision; and,

WHEREAS, Section 7-2-4601, Montana Code Annotated, provides that whenever the owners of real property contiguous to any incorporated city of the first class petition to have said property made a part of the municipal corporation, such lands may be embraced within the corporate limits thereof and the boundaries of such city of the first class extended so as to include the same; and,

WHEREAS, the owner of the hereinabove described property has submitted a petition to have said property annexed to the City of Great Falls.

NOW, THEREFORE, the City Commission now finds that it is to the best interest of the City of Great Falls and its inhabitants to proceed with the incorporation of said territory into the City of Great Falls; and,

WHEREAS, all of the proceedings herein have been conducted in strict compliance with and in conformity to the law and constitution of the State of Montana, and all conditions, acts, and things required to be done precedent to and in the passage and adoption of this resolution have been properly and legally done, and performed;

NOW, THEREFORE, BE IT RESOLVED BY THE COMMISSION OF THE CITY OF GREAT FALLS, MONTANA;

That the boundaries of the City of Great Falls, Montana, be and the same are hereby extended so as to embrace and include within the corporate limits of said city all of the land hereinabove described, included as: "PINE HILL MINOR SUBDIVISION AND THE ABUTTING SEGMENT OF HUCKLEBERRY DRIVE, LOCATED IN THE SW1/4 OF SECTION 22, TOWNSHIP 20 NORTH, RANGE 3 EAST, P.M.M., CASCADE COUNTY, MONTANA."

BE IT FURTHER RESOLVED BY THE COMMISSION OF THE CITY OF GREAT FALLS, MONTANA:

The Cascade County Clerk and Recorder is hereby authorized and directed to change the appropriate district boundaries of the City of Great Falls, Montana, to include said tracts of land; and,

BE IT FURTHER RESOLVED BY SAID CITY COMMISSION that this Resolution shall become effective from and after the date of the filing of said document in the office of the Cascade County Clerk and Recorder.

PASSED AND ADOPTED by the City Commission of the City of Great Falls, Montana, on this 4th day of September, 2007.

Dona R. Stebbins, Mayor

ATTEST:

Lisa Kunz, City Clerk

(SEAL OF CITY)

APPROVED FOR LEGAL CONTENT:

David V. Gliko, City Attorney

State of Montana)
County of Cascade :ss
City of Great Falls)

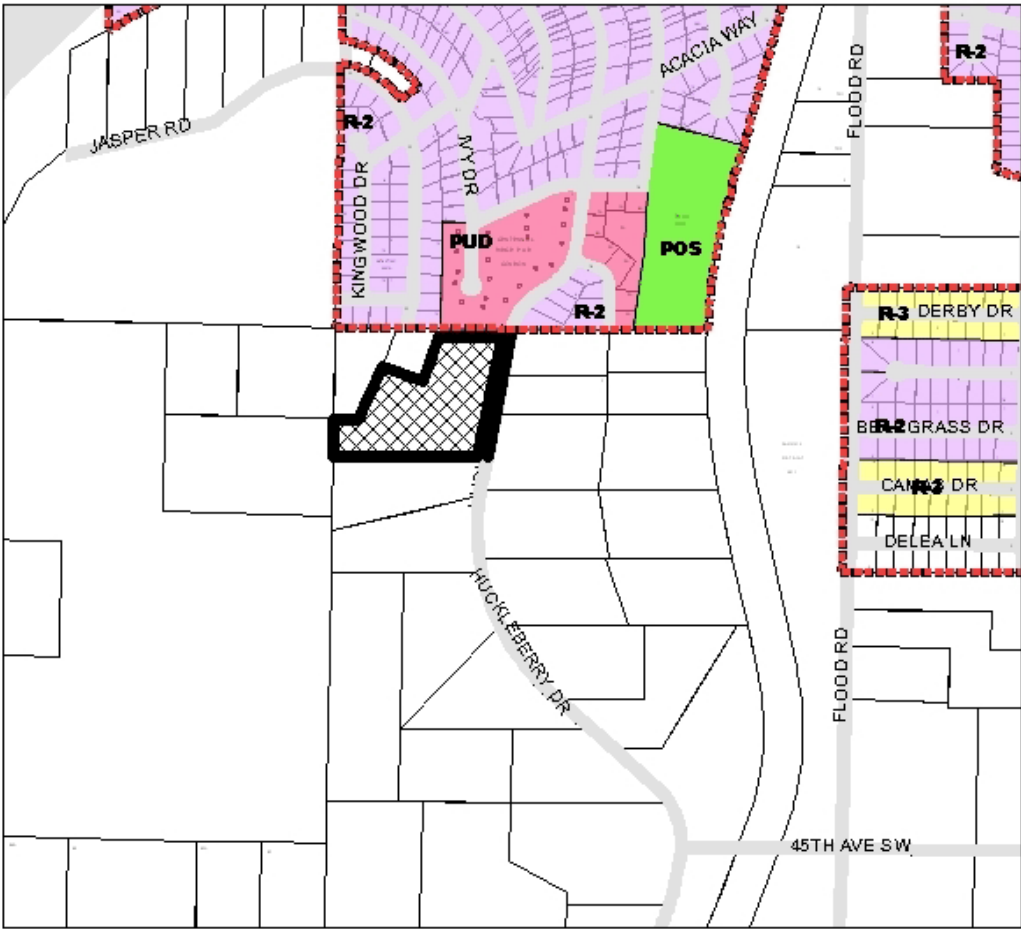
I, Lisa Kunz, City Clerk of the City of Great Falls, Montana, do hereby certify that the foregoing Resolution 9680 was placed on its final passage by the Commission of the City of Great Falls, Montana, at a meeting thereof held on the 4th day of September, 2007, wherein it was approved by said Commission.


IN WITNESS WHEREOF, I have hereunto set my hand and affixed the Seal of said City this 4th day of September, 2007.

Lisa Kunz, City Clerk

(SEAL OF CITY)

VICINITY/ZONING MAP



 PROPOSED PINE HILL ADDITION TO BE ANNEXED TO THE CITY AND BE ASSIGNED A CITY ZONING CLASSIFICATION OF "PUD" PLANNED UNIT DEVELOPMENT

 PORTION OF HUCKLEBERRY DRIVE PROPOSED TO BE ANNEXED


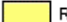
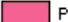



 City Limits
  R-3 Single-family high density
  PUD Planned unit development
 R-2 Single-family medium density
  POS Parks and Open Space
  Tracts of land outside City

EXHIBIT "A"

