

RESOLUTION NO. 9338

A RESOLUTION OF INTENTION BY THE CITY COMMISSION OF THE CITY OF GREAT FALLS, MONTANA, TO EXTEND THE BOUNDARIES OF SAID CITY TO INCLUDE WEST RIDGE ADDITION, PHASE 1, LOCATED IN THE NW1/4, NE1/4 OF SECTION 35, TOWNSHIP 21 NORTH, RANGE 3 EAST, P.M.M., CASCADE COUNTY, MONTANA, DIRECTING NOTICE TO BE GIVEN BY THE CITY CLERK AS PROVIDED BY LAW.

● * * * * *

WHEREAS, the City of Great Falls is a city incorporated under the laws of the State of Montana, and having a population of more than ten thousand (10,000) is a city of the first class; and,

WHEREAS, there is contiguous to said City, but without the boundaries thereof, certain tracts or parcels of land situated in the County of Cascade, State of Montana, and described as follows:

West Ridge Addition, Phase 1, located in the NW1/4, NE1/4 of Section 35, Township 21 North, Range 3 East, P.M.M., Cascade County, Montana, and containing 10.45 acres,

all as shown on the map attached hereto marked Exhibit "A" and by this reference made a part hereof, and according to the final plat of West Ridge Addition, Phase 1; and,

WHEREAS, Section 7-2-4601, Montana Code Annotated, provides that whenever the owners of real property contiguous to any incorporated city of the first class petition to have said property made a part of the municipal corporation, such lands may be embraced within the corporate limits thereof and the boundaries of such city of the first class extended so as to include the same.

NOW, THEREFORE, BE IT RESOLVED BY THE COMMISSION OF THE CITY OF GREAT FALLS, MONTANA;

That in its judgment it will be to the best interest of said City of Great Falls and the inhabitants thereof, that the boundaries of said City of Great Falls shall be extended so as to include: "WEST RIDGE ADDITION, PHASE 1, LOCATED IN THE NW1/4, NE1/4 OF SECTION 35, TOWNSHIP 21 NORTH, RANGE 3 EAST, P.M.M., CASCADE COUNTY, MONTANA."

BE IT FURTHER RESOLVED BY SAID CITY COMMISSION: That Tuesday, the 2nd day of September, 2003, at 7:00 P.M., in the Commission Chambers at the Great Falls Civic Center, Great Falls, Montana, be and the same is hereby set as the time and

place for a public hearing at which time the Great Falls City Commission shall hear all persons and all things relative to the proposed annexation of "WEST RIDGE ADDITION, PHASE 1, LOCATED IN THE NW1/4, NE1/4 OF SECTION 35, TOWNSHIP 21 NORTH, RANGE 3 EAST, P.M.M., CASCADE COUNTY, MONTANA."

BE IT FURTHER RESOLVED BY SAID CITY COMMISSION that the City Clerk of said City shall, at the aforesaid public hearing before the said City Commission and after expiration of a twenty (20) day period following the first publication of notice of passage of this Resolution, lay before the City Commission all communications in writing by her so received pertaining to said annexation.

PASSED AND ADOPTED by the City Commission of the City of Great Falls, Montana, on this 5th day of August, 2003.

Randall H. Gray, Mayor

ATTEST:

Melodi A. Wald, Deputy City Clerk

(SEAL OF CITY)

Approved for legal content: City Attorney

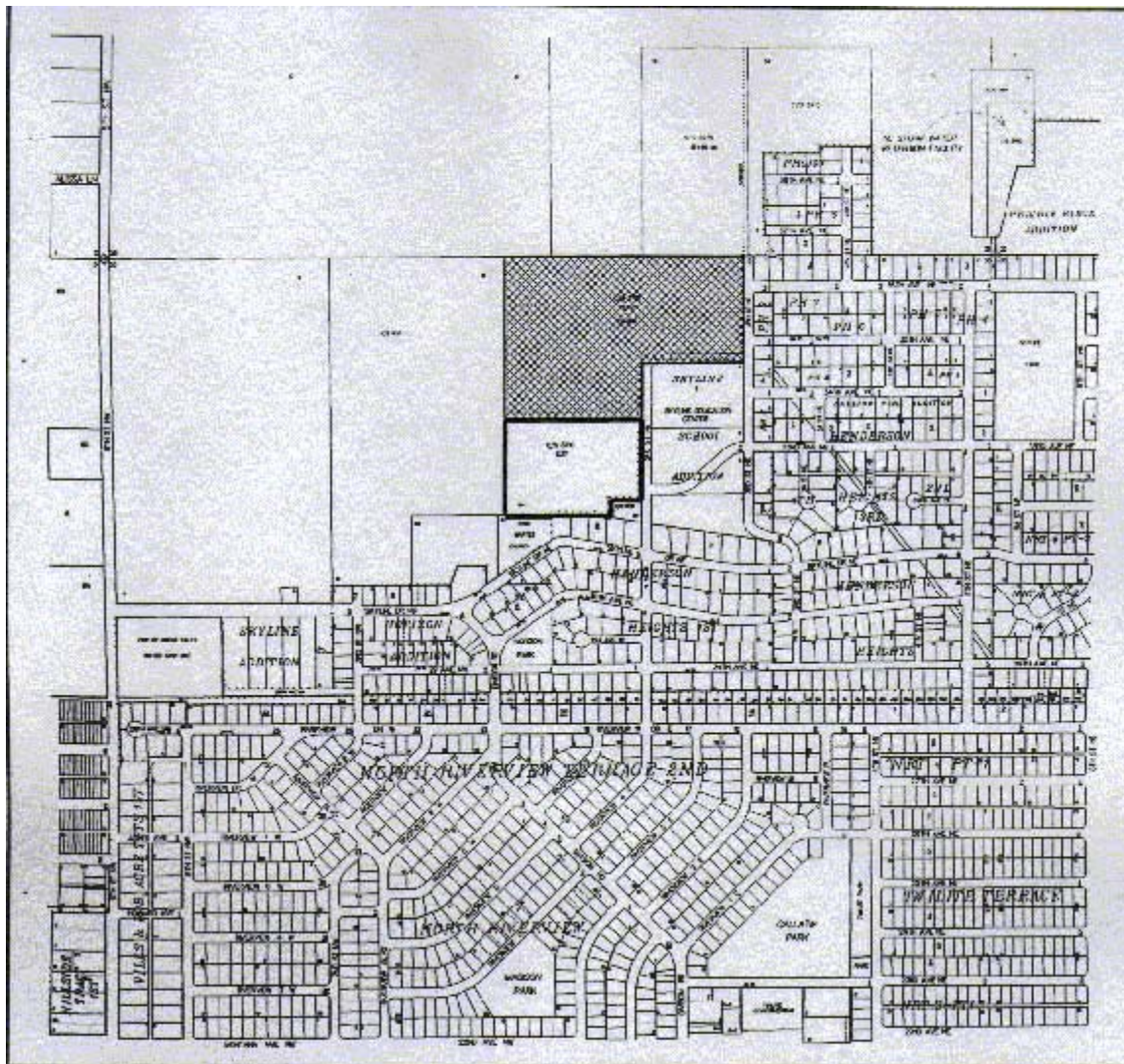
State of Montana)
County of Cascade :ss
City of Great Falls)

I, Melodi A. Wald, Deputy City Clerk of the City of Great Falls, Montana, do hereby certify that the foregoing Resolution No. 9338 was placed on its final passage by the Commission of the City of Great Falls, Montana, at a meeting thereof held on the 5th day of August, 2003, and approved by the Mayor of said City on the 5th day of August, 2003.

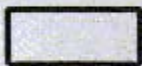
IN WITNESS WHEREOF, I have hereunto set my hand and affixed the Seal of said City this 5th day of August, 2003.

Melodi A. Wald, Deputy City Clerk

(SEAL OF CITY)



"VICINITY MAP"



FINAL PLAT WEST RIDGE ADDITION, PHASE 1



REMAINDER OF
PRELIMINARY PLAT WEST RIDGE ADDITION



EXISTING CITY LIMITS

ZONING - ALL INCORPORATED PROPERTY IN THE VICINITY IS "A" RESIDENTIAL
 - COUNTY ZONING SURROUNDING SUBDIVISION SITE IS "R-2" LOW DENSITY RESIDENTIAL



6/5/2003