

RESOLUTION NO. 9254

A RESOLUTION BY THE CITY COMMISSION OF THE CITY OF GREAT FALLS, MONTANA, TO EXTEND THE BOUNDARIES OF SAID CITY TO INCLUDE 4TH SUPPLEMENT TO SKYLINE HEIGHTS ADDITION, LOCATED IN THE NE1/4 OF SECTION 36, TOWNSHIP 21 NORTH, RANGE 3 EAST, P.M.M., CASCADE COUNTY, MONTANA, MORE PARTICULARLY DESCRIBED HEREINBELOW; ALL AS SHOWN ON THE MAP ATTACHED HERETO MARKED EXHIBIT "A" AND BY THIS REFERENCE MADE A PART HEREOF.

● * * * * *

WHEREAS, the City of Great Falls is a city incorporated under the laws of the State of Montana, and having a population of more than ten thousand (10,000) is a city of the first class; and,

WHEREAS, there is contiguous to said City, but without the boundaries thereof, certain tracts or parcels of land situated in the County of Cascade, State of Montana, and described as follows:

4th Supplement to Skyline Heights Addition, located in the NE1/4 of Section 36, Township 21 North, Range 3 East, P.M.M., Cascade County, Montana, and containing 2.875 acres,

all as shown on the map attached hereto marked Exhibit "A" and by this reference made a part hereof, and according to the final plat of 4th Supplement to Skyline Heights Addition; and,

WHEREAS, Section 7-2-4601, Montana Code Annotated, provides that whenever the owners of real property contiguous to any incorporated city of the first class petition to have said property made a part of the municipal corporation, such lands may be embraced within the corporate limits thereof and the boundaries of such city of the first class extended so as to include the same.

WHEREAS, in the judgement of the City Commission of said City, expressed by Resolution No. 9241 entitled:

A RESOLUTION OF INTENTION BY THE CITY COMMISSION OF THE CITY OF GREAT FALLS, MONTANA, TO EXTEND THE BOUNDARIES OF SAID CITY TO INCLUDE 4TH SUPPLEMENT TO SKYLINE HEIGHTS ADDITION, LOCATED IN THE NE ¼ OF SECTION 36, TOWNSHIP 21 NORTH, RANGE 3 EAST, P.M.M., CASCADE COUNTY, MONTANA, DIRECTING NOTICE TO BE GIVEN BY THE CITY CLERK AS PROVIDED BY LAW.

duly and regularly passed and adopted on the 4th day of June, 2002, stating that it will be in the best interest of said city and the inhabitants thereof, that the boundaries of said City of Great Falls shall be extended so as to include "4TH SUPPLEMENT TO SKYLINE HEIGHTS ADDITION, LOCATED IN THE NE1/4 OF SECTION 36, TOWNSHIP 21 NORTH, RANGE 3 EAST, P.M.M., CASCADE COUNTY, MONTANA."

WHEREAS, the City Clerk of said City, pursuant to said Resolution and the statute in such case made and provided, forthwith caused to be published in the Great Falls Tribune, the newspaper published nearest said tract of land, at least once a week for two (2) successive weeks, a notice to the effect that said Resolution had been duly and regularly passed, and that for a period of twenty (20) days after the first publication of said notice, said City Clerk would receive expressions of approval or disapproval, in writing, of the said proposed extension of the boundaries of said City, and also stating therein the time and place set for the public hearing provided by said Resolution; and,

WHEREAS, the first publication of said notice hereinbefore referred to was the 23rd day of June, 2002; and,

WHEREAS, the City Clerk has received no expressions of approval or disapproval of the proposed alterations of the boundaries of the municipality, within the time allowed by said notice; and,

WHEREAS, a public hearing was held by the City Commission of the City of Great Falls on July 16, 2002, at 7:00 P.M., in the Commission Chambers of the Great Falls Civic Center, where said Commission heard all persons and all things relative to the proposed annexation of said property;

NOW, THEREFORE, the City Commission now finds that it is to the best interest of the City of Great Falls and its inhabitants to proceed with the incorporation of said territory into the City of Great Falls; and,

WHEREAS, all of the proceedings herein have been conducted in strict compliance with and in conformity to the law and constitution of the State of Montana, and all conditions, acts, and things required to be done precedent to and in the passage and adoption of this resolution have been properly and legally done, and performed;

NOW, THEREFORE, BE IT RESOLVED BY THE COMMISSION OF THE CITY OF GREAT FALLS, MONTANA;

That the boundaries of the City of Great Falls, Montana, be and the same are hereby extended so as to embrace and include within the corporate limits of said city all of the land hereinabove described, included as: "4TH SUPPLEMENT TO SKYLINE HEIGHTS ADDITION, LOCATED IN THE NE1/4 OF SECTION 36, TOWNSHIP 21 NORTH, RANGE 3 EAST, P.M.M., CASCADE COUNTY, MONTANA."

BE IT FURTHER RESOLVED BY THE COMMISSION OF THE CITY OF GREAT FALLS, MONTANA:

The Cascade County Clerk and Recorder is hereby authorized and directed to change the appropriate district boundaries of the City of Great Falls, Montana, to include said tract of land; and,

BE IT FURTHER RESOLVED BY SAID CITY COMMISSION that this Resolution shall become effective thirty (30) days after its passage and approval.

PASSED AND ADOPTED by the City Commission of the City of Great Falls, Montana, on this 16th day of July, 2002.

Randall H. Gray, Mayor

ATTEST:

Peggy J. Bourne, City Clerk

(SEAL OF CITY)

Approved for legal content: City Attorney

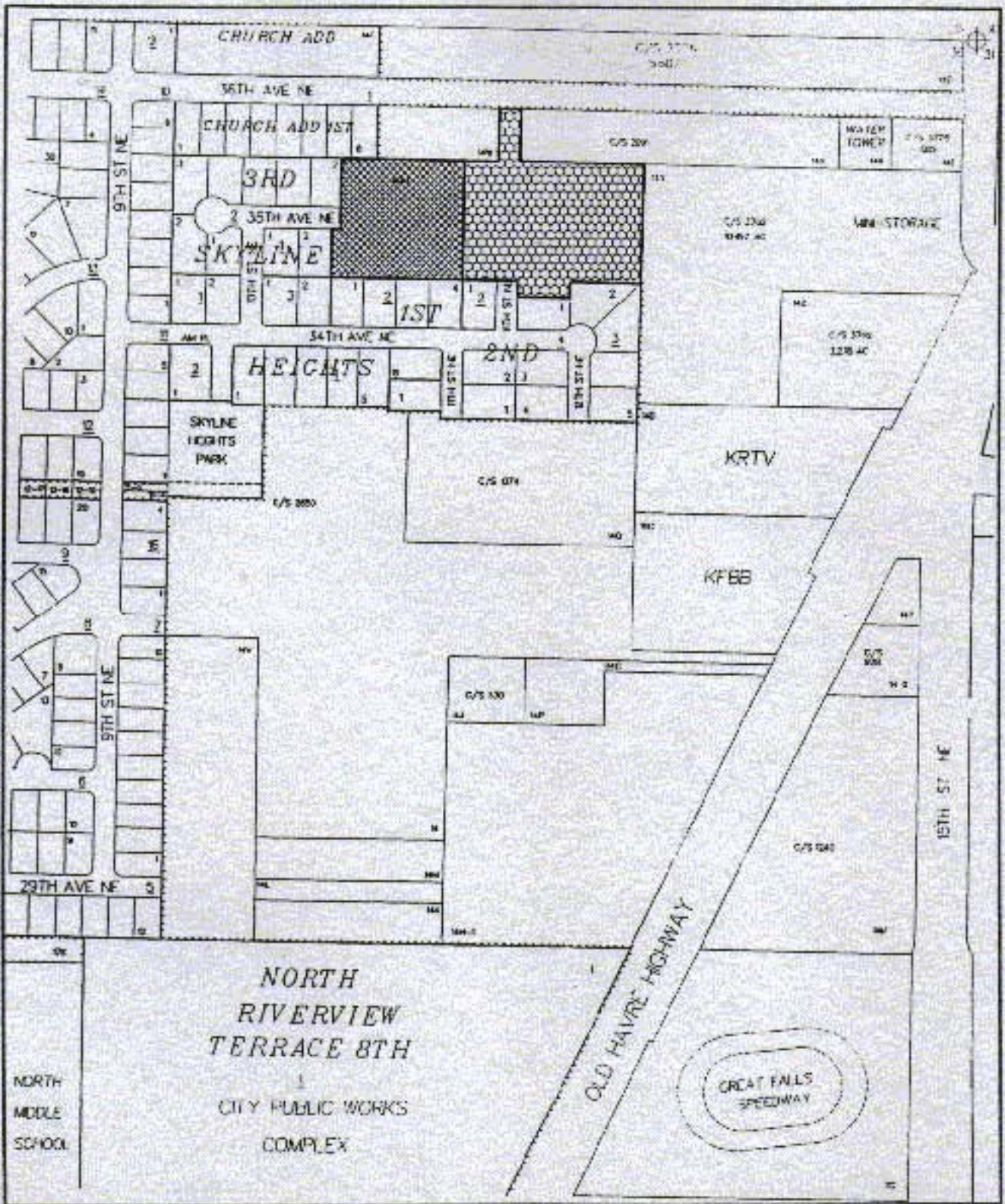
State of Montana)
County of Cascade :ss
City of Great Falls)




I, Peggy J. Bourne, City Clerk of the City of Great Falls, Montana, do hereby certify that the foregoing Resolution No. 9254 was placed on its final passage by the Commission of the City of Great Falls, Montana, at a meeting thereof held on the 16th day of July, 2002, and approved by the Mayor of said City on the 16th day of July, 2002.

IN WITNESS WHEREOF, I have hereunto set my hand and affixed the Seal of said City this 16th day of July, 2002.

Peggy J. Bourne, City Clerk

(SEAL OF CITY)



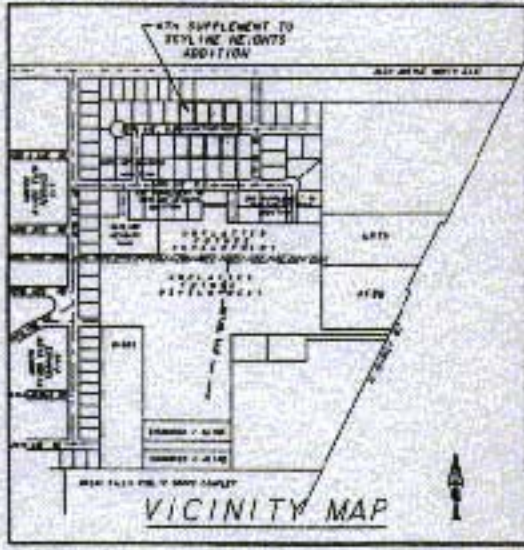
-  FINAL PLAT 4TH SUPPLEMENT TO SKYLINE HEIGHTS
-  REMAINDER OF PRELIMINARY PLAT OF SKYLINE HEIGHTS ADDITION
-  EXISTING CITY LIMITS

"VICINITY MAP"



4/25/2005

PLAT OF
**4TH SUPPLEMENT TO
 SKYLINE HEIGHTS ADDITION**
 TO THE CITY OF GREAT FALLS
 A SUBDIVISION IN THE NE1/4, SECTION 36,
 T21N, R3E, P.M., MT., CASCADE COUNTY, MONTANA

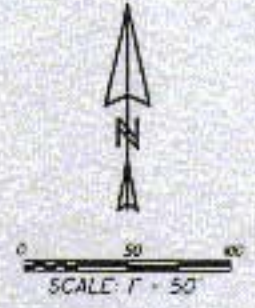


AREAS

STREET	21,000 SF - 0.480 ACRES
LOT	103,845 SF - 2.370 ACRES
TOTAL AREA	125,245 SF - 2.870 ACRES

LEGEND

- ADDITION BOUNDARY
- NEW LOT LINES
- UTILITY EASEMENT
- EXISTING PROPERTY LINE
- POSSIBLE FUTURE DEVELOPMENT
- P.O.B. POINT OF BEGINNING



NOTE: 5" x 24" IRON PIN AND CAP SET AT ALL NEW PROPERTY CORNERS.

P.O.B.

