

RESOLUTION NO. 9241

A RESOLUTION OF INTENTION BY THE CITY COMMISSION OF THE CITY OF GREAT FALLS, MONTANA, TO EXTEND THE BOUNDARIES OF SAID CITY TO INCLUDE 4TH SUPPLEMENT TO SKYLINE HEIGHTS ADDITION, LOCATED IN THE NE1/4 OF SECTION 36, TOWNSHIP 21 NORTH, RANGE 3 EAST, P.M.M., CASCADE COUNTY, MONTANA, DIRECTING NOTICE TO BE GIVEN BY THE CITY CLERK AS PROVIDED BY LAW.

● * * * * *

WHEREAS, the City of Great Falls is a city incorporated under the laws of the State of Montana, and having a population of more than ten thousand (10,000) is a city of the first class; and,

WHEREAS, there is contiguous to said City, but without the boundaries thereof, certain tracts or parcels of land situated in the County of Cascade, State of Montana, and described as follows:

4th Supplement to Skyline Heights Addition, located in the NE1/4 of Section 36, Township 21 North, Range 3 East, P.M.M., Cascade County, Montana, and containing 2.875 acres,

all as shown on the map attached hereto marked Exhibit "A" and by this reference made a part hereof, and according to the final plat of 4th Supplement to Skyline Heights Addition; and,

WHEREAS, Section 7-2-4601, Montana Code Annotated, provides that whenever the owners of real property contiguous to any incorporated city of the first class petition to have said property made a part of the municipal corporation, such lands may be embraced within the corporate limits thereof and the boundaries of such city of the first class extended so as to include the same.

NOW, THEREFORE, BE IT RESOLVED BY THE COMMISSION OF THE CITY OF GREAT FALLS, MONTANA;

That in its judgment it will be to the best interest of said City of Great Falls and the inhabitants thereof, that the boundaries of said City of Great Falls shall be extended so as to include: "4TH SUPPLEMENT TO SKYLINE HEIGHTS ADDITION, LOCATED IN THE NE1/4 OF SECTION 36, TOWNSHIP 21 NORTH, RANGE 3 EAST, P.M.M., CASCADE COUNTY, MONTANA."

BE IT FURTHER RESOLVED BY SAID CITY COMMISSION that the City Clerk of said City shall, at the aforesaid public hearing before the said City Commission and after expiration of a twenty (20) day period following the first publication of notice of passage of this Resolution, lay before the City Commission all communications in writing by her so received pertaining to said annexation.

PASSED AND ADOPTED by the City Commission of the City of Great Falls, Montana, on this 4th day of June, 2002.

Randall H. Gray, Mayor

ATTEST:

Peggy J. Bourne, City Clerk

(SEAL OF CITY)

Approved for legal content: City Attorney

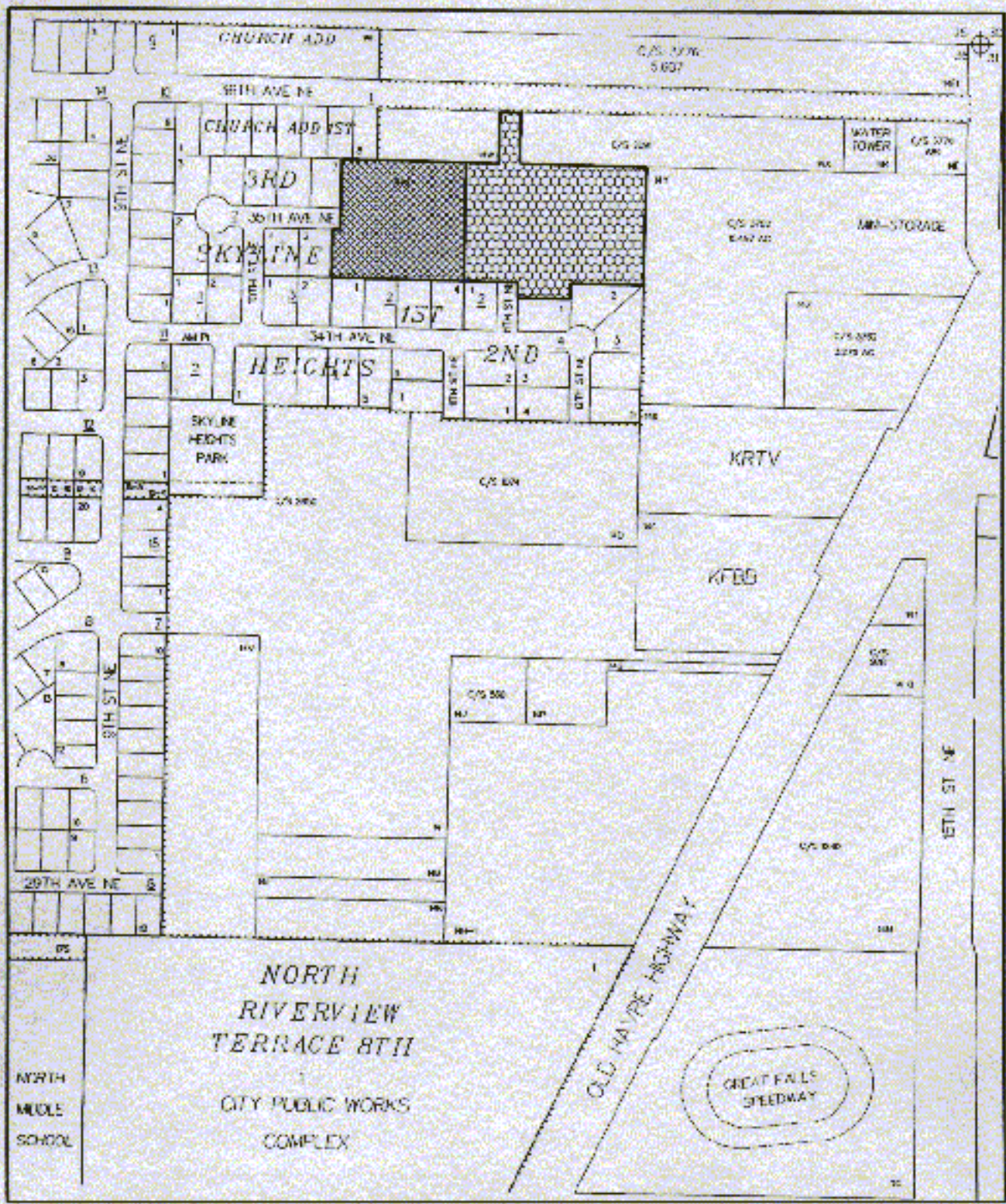
State of Montana)
County of Cascade :ss
City of Great Falls)




I, Peggy J. Bourne, City Clerk of the City of Great Falls, Montana, do hereby certify that the foregoing Resolution No. 9241 was placed on its final passage by the Commission of the City of Great Falls, Montana, at a meeting thereof held on the 4th day of June, 2002, and approved by the Mayor of said City on the 4th day of June, 2002.

IN WITNESS WHEREOF, I have hereunto set my hand and affixed the Seal of said City this 4th day of June, 2002.

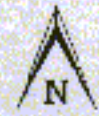
Peggy J. Bourne, City Clerk

(SEAL OF CITY)



-  FINAL PLAT 4TH SUPPLEMENT TO SKYLINE HEIGHTS
-  REMAINDER OF PRELIMINARY PLAT OF SKYLINE HEIGHTS ADDITION
-  EXISTING CITY LIMITS

"VICINITY MAP"



4/25/2002