

An aerial photograph of Great Falls, Montana, showing the city, the Yellowstone River, and a dam. The city is densely packed with residential and commercial buildings. The river flows through the center of the city, and a dam is visible in the foreground. The background shows a vast, flat landscape under a blue sky with scattered clouds.

City of Great Falls

**Street and Traffic
Division**

Street and Traffic Division

- Snow and Ice Control
- Street Sweeping
- Pothole Repair
- Alley and Gravel Street Maintenance
- Asphalt Mill and Overlay
- Asphalt Patching
- Chip Seal
- Minor Reconstructions
- Traffic Study
- Sign and Signal Maintenance
- Guardrail Maintenance
- Pavement Markings



Snow Sense

Things You Can Do To Help Us Help You

- Stay clear of working snow plows and equipment.
- Remove vehicles from snow routes.
- DO NOT plow or shovel snow into street.

Snow Facts

- Snow that is plowed or shoveled into streets from sidewalks and driveways compounds snow levels and makes vehicular travel difficult and dangerous.
- Every 12" of snow that falls on the road surface of an average city block is = to 50 cubic yards.
- Plowing of residential streets precludes access to driveways, on street parking, and curbside mail service.

TRAFFIC DIVISION

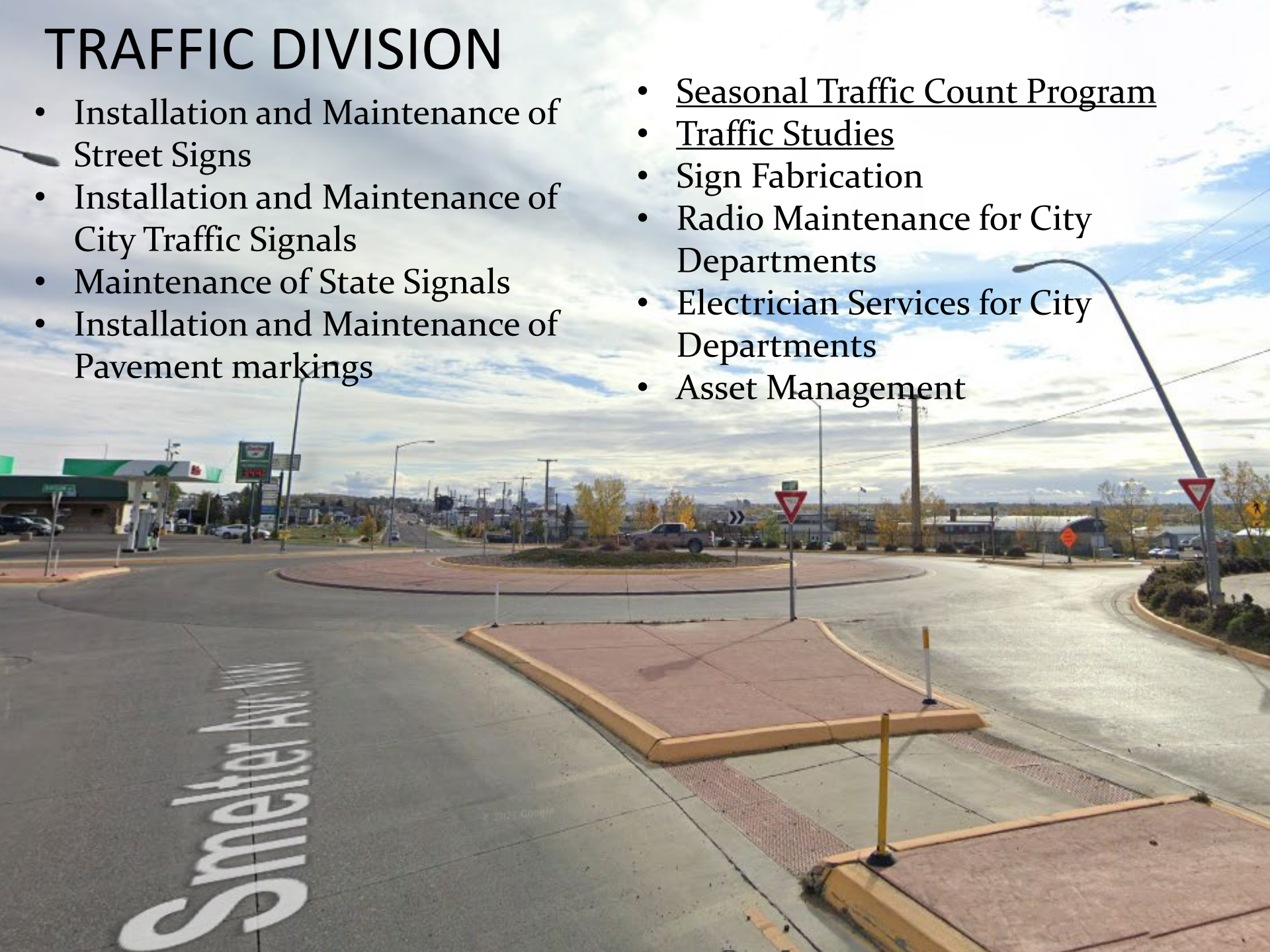


“To help facilitate the safe and efficient movement of vehicles and pedestrians throughout our city by managing these traffic related assets of the public infrastructure” – traffic signals, traffic signs, and pavement markings.

TRAFFIC DIVISION

- Installation and Maintenance of Street Signs
- Installation and Maintenance of City Traffic Signals
- Maintenance of State Signals
- Installation and Maintenance of Pavement markings

- Seasonal Traffic Count Program
- Traffic Studies
- Sign Fabrication
- Radio Maintenance for City Departments
- Electrician Services for City Departments
- Asset Management



TRAFFIC ASSETS

SIGNS

14,200

SUPPORTS

6,180

City Owned Signal Head

356

City Signal Cabinet

23

State Owned/ City Maintained Head

1287

State Signal Cabinet

67

PAVEMENT MARKINGS

87 MILES DOUBLE YELLOW

20 MILES WHITE/SKIP/EDGE

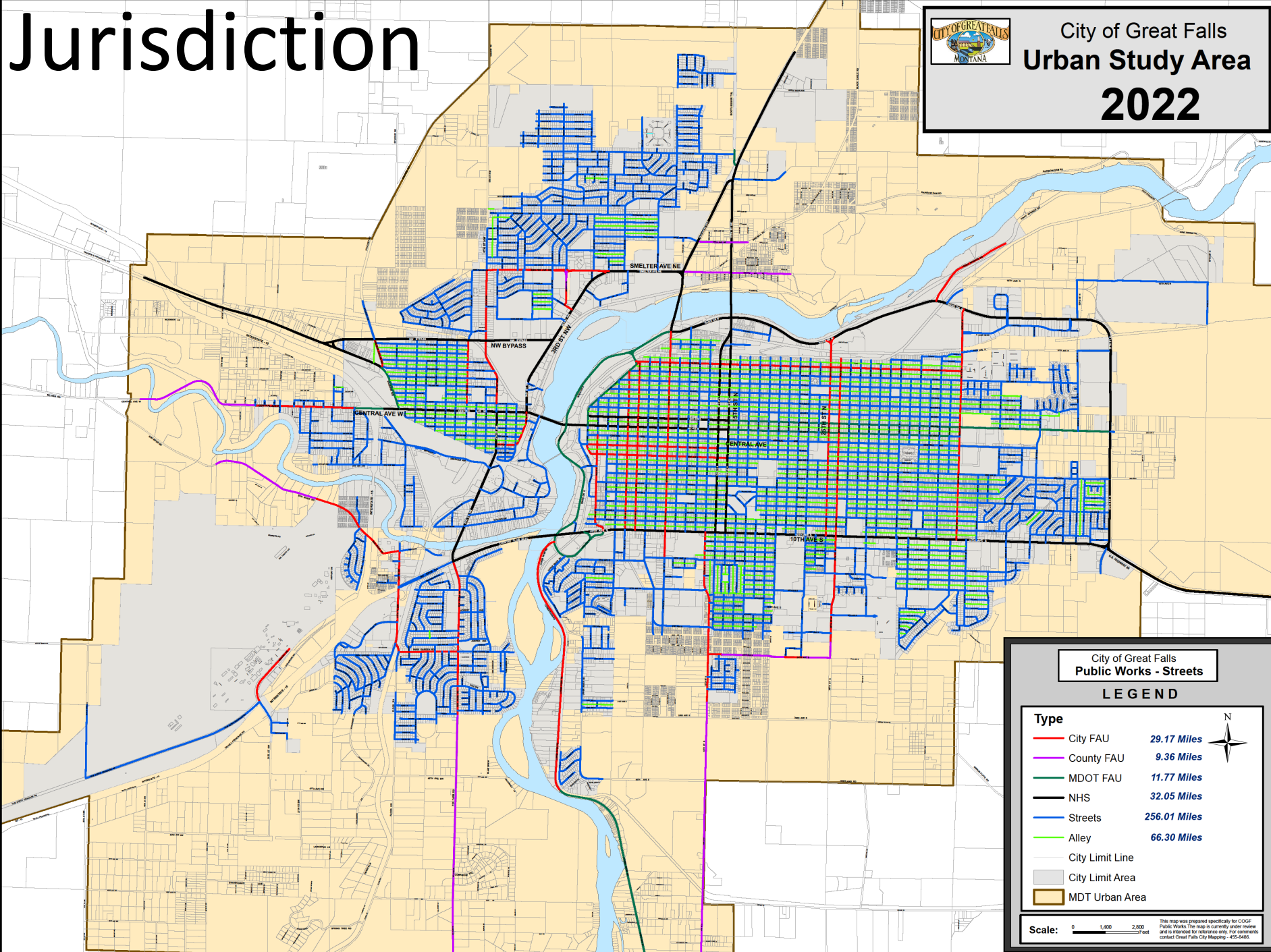
CROSSWALKS

294

Jurisdiction



City of Great Falls
Urban Study Area
2022



City of Great Falls
Public Works - Streets

LEGEND

Type		
City FAU		29.17 Miles
County FAU		9.36 Miles
MDOT FAU		11.77 Miles
NHS		32.05 Miles
Streets		256.01 Miles
Alley		66.30 Miles
City Limit Line		
City Limit Area		
MDT Urban Area		



Scale: 0 1,000 2,000 feet
This map was prepared specifically for COFG Public Works. The map is currently under review and is intended for reference only. For comments contact Great Falls City Mapping - 405-848-8888.

Manual on Uniform Traffic Control Devices

– MUTCD –

- This Manual contains the basic principles that govern the design and use of traffic control devices for all streets, highways, bikeways, and private roads open to public travel, regardless of type or class or the public agency, official, or owner having jurisdiction. This Manual's text specifies the restriction on the use of a device if it is intended for limited application or for a specific system. It is important that these principles be given primary consideration in the selection and application of each device.

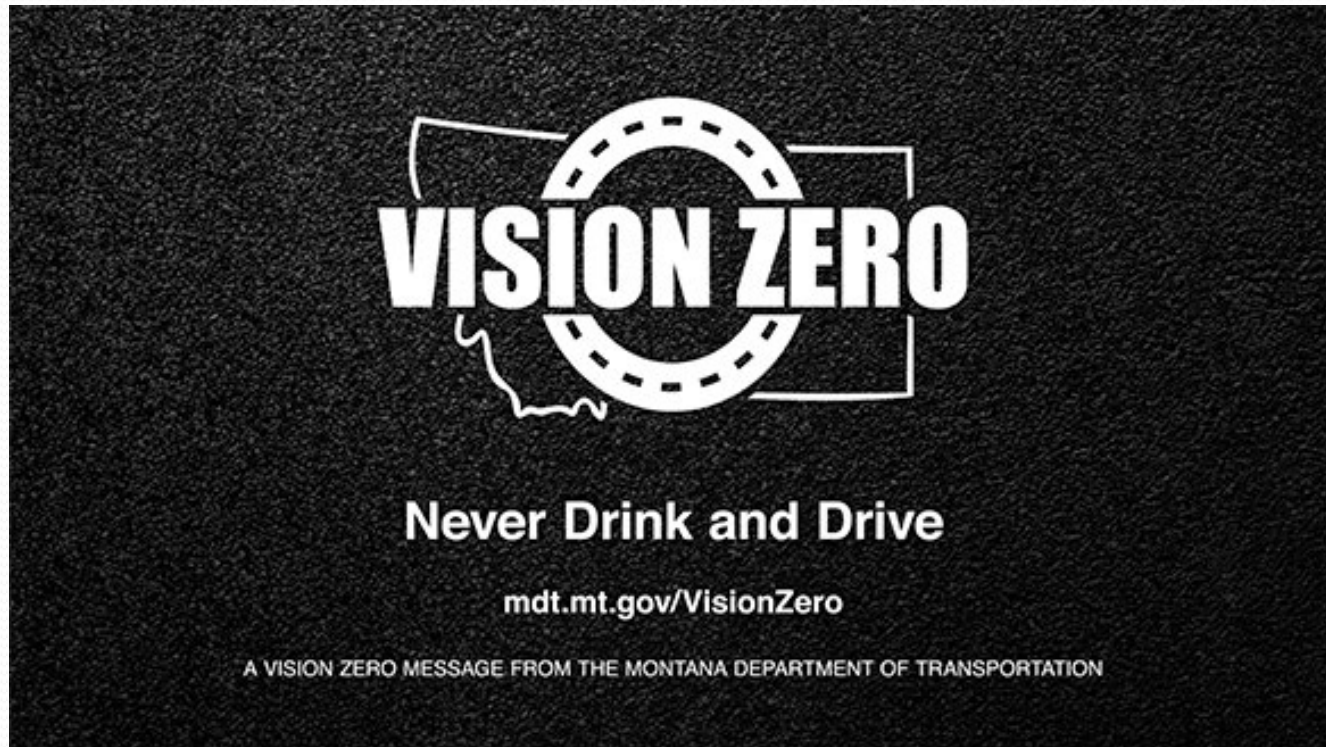
Traffic Studies



- MDT Crash Data
- Average Daily Traffic (ADT)
- Miovision Camera
- Speed Study
- Vision Triangle

MDT Crash Data

- <https://www.mdt.mt.gov/publications/datastats/crashdata.aspx>
- Lists a history of reported traffic accidents and details.



Average Daily Traffic – ADT

The average number of vehicles passing a specific point on a connection or roadway on an average day.

- Bidirectional
- Measures Speed
- Type of Vehicle



Miovision Camera

Temporary installation of system provides a video recording of an intersection or segment of road allowing users to gather valuable information on vehicular, pedestrian, and bicycle traffic volumes, patterns, flow, and type of vehicle. This tool may be employed for any amount of time required in order to collect a complete traffic picture.

Benefits

- Traffic Staff are freed up for other duties
- Precise level of accuracy
- Data can be broken down to specific time
- Discreet design gives an honest depiction



Speed Monitoring Awareness Radar Trailer (SMART)

New to Traffic Division. The Speed Trailer is currently available for use in neighborhoods, school zones, construction sites, and dangerous roads where the speed of vehicles could be a problem. This unit is a portable, self-contained speed display device that is towed to sites experiencing speed-related problems.

Benefits

- Increase in drivers speed awareness.
- Frees up enforcement to concentrate on other issues.
- Speeds lessen when in use and continue for a period of time after it is removed.

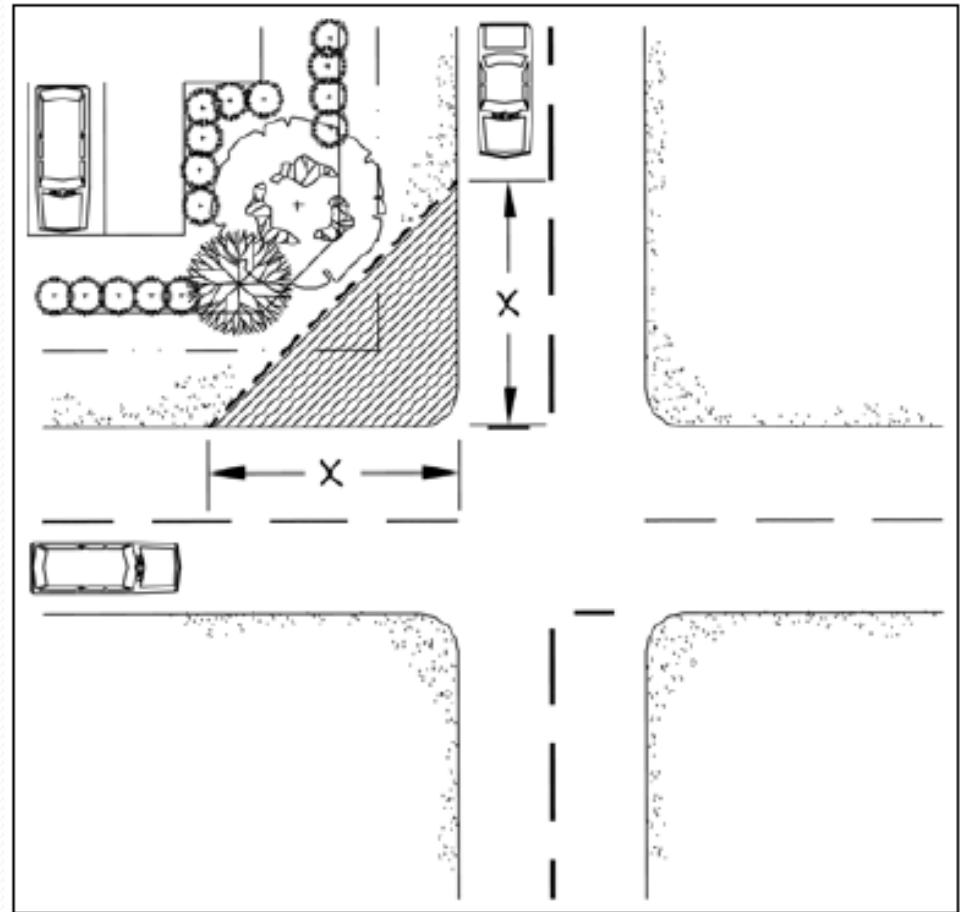
Data Collection – Directional

- Speeds
- ADT



Other Common Requests

- Sight Visibility
- Sign Obstruction
- Parking Issues
- Pavement Markings
- Traffic Signal Failure
- Bent, Broken, or Missing Signs



- Public Works Operations 1-406-771-1401
- Partner Line 1-406-727-8637
- www.greatfallsmt.net/
- Non- Emergency Dispatch 1-406-454-6979
- Emergency Call 911



Contact Us