

# Upper River Road Overlay Project



City of Great Falls and Cascade County

# Upper River Road Overlay Project

- ▶ Cooperative effort between City of Great Falls Street Division and Cascade County Public Works Department.
- ▶ Scope of project, Asphalt Overlay on Upper River Road from Overlook Dr. to 40<sup>th</sup> Ave South.
  - ▶ Preparation for Overlay includes excavation and patching of areas of minor reconstruction and an asphalt leveling course.
  - ▶ Prep work will be completed in phased order as will the overlay process.
- ▶ **Tentative Start date for Prep Work May 24<sup>th</sup>.**
- ▶ **Tentative Start date for Asphalt Overlay June 7<sup>th</sup>.**

# What to Expect

- ▶ Phasing for this project has been designed to reduce the common stressors associated with road maintenance while also continuing a productive and efficient schedule.
- ▶ Inconvenience's will be minimized as much as possible however you may experience unforeseen delays.
- ▶ The process of “Asphalt Milling” and “Asphalt Overlay” will require a section of the street to be Closed To Any and All Traffic. Access to Parking in the work zone and also driveway access will not be allowed. Travel through areas around the work zone may also be affected during this process, please follow the directions of all signs and traffic control devices and limit your speed.
- ▶ Slow down and use caution for Abrupt Edges and Bump signs.

# Expect to See



# What's the Difference?



## ROAD CLOSED TO THRU TRAFFIC

The road is closed ahead beyond this sign and thru traffic will not be able to exit. Travel beyond this sign is only to access homes or businesses.



## ROAD CLOSED

The road is closed and you can not go beyond this point.

# What Can I Do To Help?

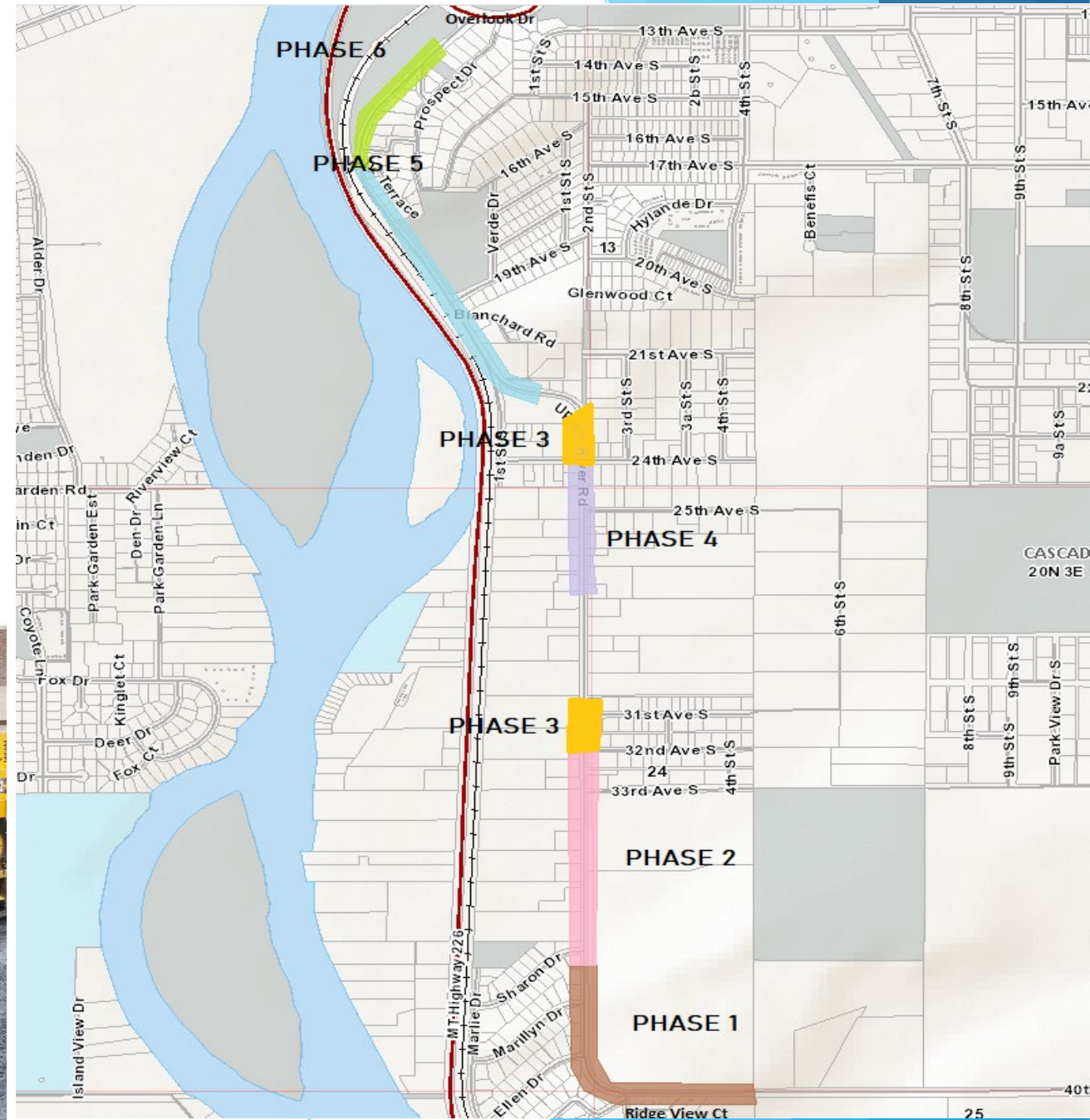
- ▶ Make a plan to park outside work area until project has been completed.
- ▶ Plan ahead in order to avoid a last minute rush.
- ▶ Follow all posted Temporary Traffic Control directions and limit speed.
  
- ▶ Cooperation from Citizens allows us to work Safely and Efficiently while maintaining a Quality project.
- ▶ We do know that sometimes these efforts can cause temporary hardships. If you have any questions or concerns throughout the course of these projects please call our offices at **(406) 771-1401**. Project Foreman will be onsite to assist with logistical issues that may arise.
  
- ▶ It is our goal to provide the best quality of work possible in a timely manner while reducing stress or confusion, but we cannot do it alone. Your patience and cooperation is a key part of the process and is very much appreciated by all of our staff.

# Scheduling

- ▶ Prior to the Overlay project Prep work will be completed.
  - ▶ This work will be completed over the course of 2 weeks prior to the Asphalt Overlay.
  - ▶ Flaggers and Pilot car will be utilized in the immediate work areas.
  - ▶ Expect minor delays of 5 to 10 minutes
  - ▶ Local access to properties will be allowed.
  - ▶ Follow all Temporary Traffic Control and Flagger instructions.
- ▶ Project has been broken up into 6 phases.
  - ▶ Each phase should be completed in a day or two.
- ▶ After each phase has been completed it will be opened to traffic.
- ▶ Notifications will be done prior to the start of each phase.

# Road Overlay Project

- ✓ Phase 1 Brown
- ✓ Phase 2 Pink
- ✓ Phase 3 Yellow
- ✓ Phase 4 Purple
- ✓ Phase 5 Blue
- ✓ Phase 6 Green





# Reason for an Asphalt Overlay

- ▶ The City of Great Falls Street Division wants to keep our thoroughfares among the finest in the area. To accomplish this goal we routinely evaluate the condition of each street in the city. The current Overall Condition Index rating has determined that this segment of roadway is in need of an Asphalt Overlay.
- ▶ The City of Great Falls and Cascade County have fielded numerous Citizen requests for maintenance concerning the condition of Upper River Road.
- ▶ It is counterproductive to continue to mobilize man power and equipment to make non-permanent repairs.

# Phase 1

## Scope

- ▶ South of Sharon Dr to 40<sup>th</sup> Ave South East of Ridge View Court.

## Access

- ▶ Access to Ridgeview Ct will be limited.
- ▶ Access to Pierson Addition, traffic will enter on Sharon Dr. and exiting traffic be detoured north on Upper River Rd.

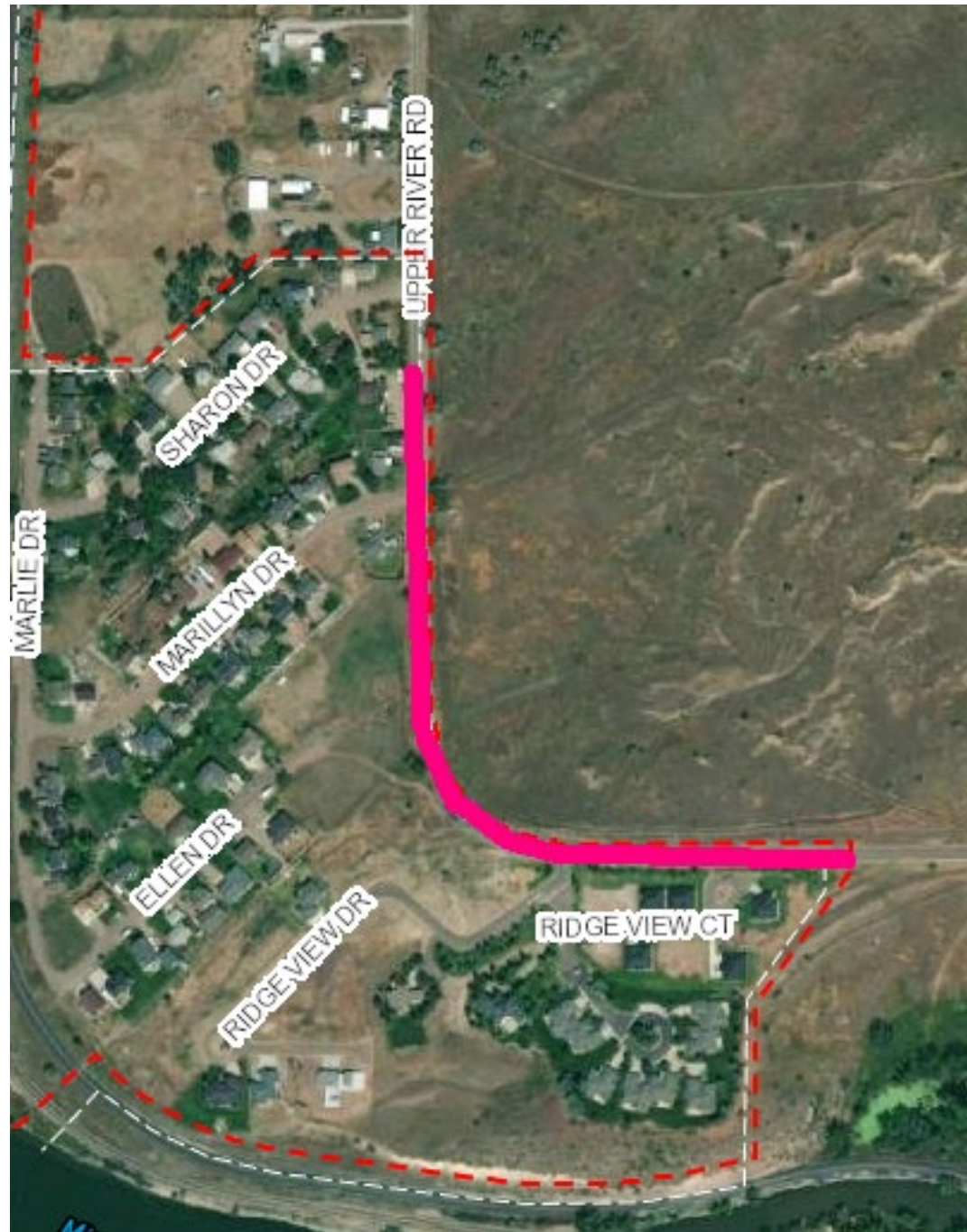
## Temporary Traffic Control

- ▶ Road Closed to Thru Traffic on 40<sup>th</sup> Ave South at 13<sup>th</sup> St South.
- ▶ Road Closed to Thru Traffic on Upper River Rd at 19<sup>th</sup> Ave South.
- ▶ Road Closed South of Sharon Dr.
- ▶ Road Closed East of Ridge View Court.

## Duration

- ▶ Scheduled for 1 day completion but subject to change due to unforeseen circumstances.
- ▶ Road will be open to South Bound Traffic at Marilyn Dr. the following day.

# Phase 1



# Phase 2

## Scope

- ▶ South of Sharon Dr. to North of 32<sup>nd</sup> Ave South.

## Access

- ▶ Access to Ridge View Ct detoured to 13<sup>th</sup> St South via 40<sup>th</sup> Ave South.
- ▶ Access to Pierson Addition, traffic will enter on Marillyn Dr. and exiting traffic will be detoured South on Upper River Rd to 13<sup>th</sup> St South via 40<sup>th</sup> Ave South.
- ▶ Access to properties located on 32<sup>nd</sup> Ave South will enter on 31<sup>st</sup> Ave South and be detoured to 3<sup>rd</sup> St South. Traffic exiting on 31<sup>st</sup> Ave South will be detoured north on Upper River Road.
- ▶ Access to properties adjoining Upper River Road between 32<sup>nd</sup> Ave South and Sharon Dr. will be limited.
  - ▶ Parking outside the work zone is recommended.

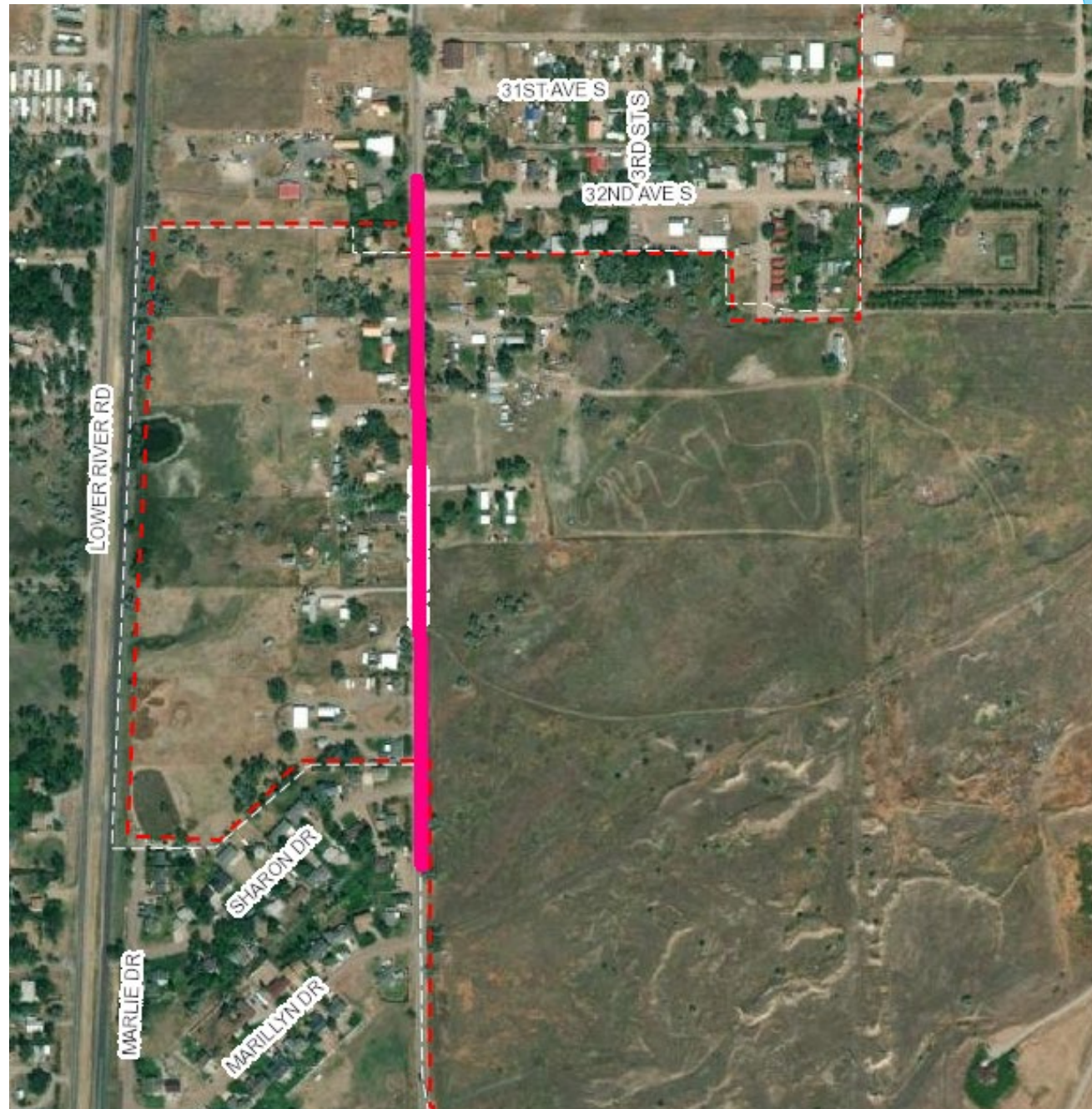
## Temporary Traffic Control

- ▶ Road Closed to Thru Traffic on 40<sup>th</sup> Ave South at 13<sup>th</sup> St South.
- ▶ Road Closed to Thru Traffic on Upper River Rd. at 19<sup>th</sup> Ave South.
- ▶ Road Closed South of Sharon Dr.
- ▶ Road Closed South of 31<sup>st</sup> Ave South.

## Duration

- ▶ Scheduled for 1 day completion but subject to change due to unforeseen circumstances.
- ▶ Road will be open to South Bound Traffic at 32<sup>nd</sup> Ave South the following day.

# Phase 2



# Phase 3

## Scope

- ▶ North of 32<sup>nd</sup> Ave South through 31<sup>st</sup> Ave South.
- ▶ Center of Intersection at 24<sup>th</sup> Ave South to the North 450 feet.

## Access

- ▶ Access to Ridge View Ct and Pierson Addition detoured from 13<sup>th</sup> St South via 40<sup>th</sup> Ave South.
- ▶ Access to properties located on 31<sup>st</sup> Ave South will enter on 32<sup>nd</sup> Ave South and be detoured to 3<sup>rd</sup> St South. Traffic exiting on 32<sup>nd</sup> Ave South will be detoured South on Upper River Road.
- ▶ Access to properties on 24<sup>th</sup> Ave South East of Upper River Road will be detoured to 1<sup>st</sup> St South.
- ▶ Access to properties adjoining Upper River Road between 31<sup>st</sup> Ave South to 32<sup>nd</sup> Ave South will be limited.
  - ▶ Parking outside the work zone is recommended.

## Temporary Traffic Control

- ▶ Road Closed to Thru Traffic on 40<sup>th</sup> Ave South at 13<sup>th</sup> St South.
- ▶ Road Closed to Thru Traffic on Upper River Rd at 19<sup>th</sup> Ave South.
- ▶ Road Closed South of 31<sup>st</sup> Ave South to North of 31<sup>st</sup> Ave South.
- ▶ Road Closed North half of 24<sup>th</sup> Ave South Intersection to the North 450 feet.

## Duration

- ▶ Scheduled for 1 day completion but subject to change due to unforeseen circumstances.
- ▶ Road will be open to South Bound Traffic at 31<sup>st</sup> Ave South the following day.

# Phase 3



# Phase 4

## Scope

- ▶ Center of Intersection of 24<sup>th</sup> Ave South to the South 1000 feet.
  - ▶ Traffic from 24<sup>th</sup> Ave South detoured to the North on Upper River Road.

## Access

- ▶ Access to Ridge View Ct and Pierson Addition detoured from 13<sup>th</sup> St South via 40<sup>th</sup> Ave South.
- ▶ Access to properties adjoining Upper River Road between 24<sup>th</sup> Ave South to 31<sup>st</sup> Ave South will be limited.
- ▶ Access to 25<sup>th</sup> Ave South will be limited.
  - ▶ Parking outside the work zone is recommended.

## Temporary Traffic Control

- ▶ Road Closed to Thru Traffic on 40<sup>th</sup> Ave South at 13<sup>th</sup> St South.
- ▶ Road Closed to Thru Traffic on Upper River Rd at 19<sup>th</sup> Ave South.
- ▶ Road Closed at 24<sup>th</sup> Ave South to the South 1000 feet.

## Duration

- ▶ Scheduled for 1 day completion but subject to change due to unforeseen circumstances.
- ▶ Road will be open to Traffic late evening.



# Phase 4



# Phase 5

## Scope

- ▶ Center of Intersection of Volk Terrace to South East of 1<sup>st</sup> St South.

## Access

- ▶ Access to Ridge View Ct, Pierson Addition, and 24<sup>th</sup> Ave South detoured from 13<sup>th</sup> St South via 40<sup>th</sup> Ave South.
- ▶ Traffic South of 24<sup>th</sup> Ave South detours to 13<sup>th</sup> St South via 40<sup>th</sup> Ave South.
- ▶ Access to Volk Terrace one lane enter and exit. Exiting traffic detours North on Upper River Road.
- ▶ Access to properties adjoining Upper River Road between 19<sup>th</sup> Ave South to 24<sup>th</sup> Ave South will be limited.
  - ▶ Parking outside the work zone is recommended.

## Temporary Traffic Control

- ▶ Road Closed to Thru Traffic on 40<sup>th</sup> Ave South at 13<sup>th</sup> St South.
- ▶ Road Closed to Thru Traffic on Upper River Rd at Prospect Way.
- ▶ Road Closed to Thru Traffic on Upper River Road at Overlook Drive.
- ▶ Road Closed at 24<sup>th</sup> Ave South.
- ▶ Road Closed at Volk Terrace.
- ▶ Road Closed on 19<sup>th</sup> Ave South at Upper River Rd.

## Duration

- ▶ Scheduled for 2 days completion but subject to change due to unforeseen circumstances.
- ▶ Road will be open to Traffic when phase is completed.

# Phase 5



# Phase 6

## Scope

- ▶ Center of Intersection of Volk Terrace to Overlook Dr.

## Access

- ▶ Northbound traffic on Upper River Rd will be detoured onto 19<sup>th</sup> Ave South.
- ▶ Southbound traffic will be detoured to 13<sup>th</sup> St South via 40<sup>th</sup> Ave South.

## Temporary Traffic Control

- ▶ Road Closed to Thru Traffic on Upper River Rd at 19<sup>th</sup> Ave South.
- ▶ Road Closed to Thru Traffic on Prospect Way at Prospect Dr.
- ▶ Road Closed to Thru Traffic on Prospect Ave at Prospect Dr.
- ▶ Road Closed at Volk Terrace and Upper River Rd.
- ▶ Road Closed at Overlook Dr. and Upper River Rd.
- ▶ Road Closed at Prospect Way and Upper River Rd.
- ▶ Road Closed at Prospect Ave. and Upper River Rd.

## Duration

- ▶ Scheduled for 2 day completion but subject to change due to unforeseen circumstances.
- ▶ Road will be open to Traffic when phase is completed.

# Phase 6



# Work to be completed after Asphalt Overlay

- ▶ Shoulder work
  - ▶ Protect edge of new asphalt.
- ▶ Asphalt Aprons on 19<sup>th</sup> Ave South, 24<sup>th</sup> Ave South, 25<sup>th</sup> Ave South, 31<sup>st</sup> Ave South, 32<sup>nd</sup> Ave South, Sharon Dr, and Marillyn Dr.
- ▶ Street Striping
- ▶ Chip Seal to be completed at a later date.

# Questions?

- ▶ If you have any questions or concerns throughout the course of these projects please call **(406) 771-1401**.
- ▶ Project Foreman will be onsite to assist with logistical issues that may arise.