



**Item:** Resolution 10146 to Levy and Assess Properties within Special Improvement Lighting Districts

**From:** Judy Burg, Taxes and Assessments

**Initiated By:** Annual Assessment Process

**Presented By:** Melissa Kinzler, Fiscal Services Director

**Action Requested:** City Commission conduct public hearing and adopt Resolution 10146

---

**Public Hearing:**

1. Mayor conducts public hearing, calling three times each for proponents and opponents.
2. Mayor closes public hearing and asks the will of the Commission.

**Suggested Motion:**

1. Commissioner moves:

“I move the City Commission (adopt/deny) Resolution 10146.”

2. Mayor requests a second to the motion, Commission discussion, and calls for the vote.
- 

**Staff Recommendation:** Staff recommends the City Commission adopt Resolution 10146 to levy and assess properties within the Special Improvement Lighting Districts.

**Background:** There are currently 27 Special Improvement Lighting Districts (SLD’s) with approximately 9,429 roadway lights. The majority (97%) of the roadway lights are owned by Northwestern Energy. The City pays a maintenance fee to Northwestern Energy for these lights in addition to a fee which covers the electrical transmission and distribution. The electrical supply for the street lights is currently being furnished by PPL Treasure State. The remaining 3% of roadway lighting is City-owned. The Special Improvement Lighting District funds are administered by the Fiscal Services Department. The purpose of the fund is to maintain the light poles and furnish electrical current for the lighting districts throughout the year. After determining financial factors pertinent to the operation of the special improvement lighting districts, an assessment amount for the next fiscal year is calculated, budgeted and presented to the City Commissioners for approval.

As part of the annual budget development and adoption procedures, the Special Improvement Lighting Districts Assessment Resolution must be submitted for City Commission action. A public notice and hearing is required prior to final passage of the assessment resolution.

**Concurrences:** Fiscal Services staff is responsible for the operational expenses, along with assessing and collecting the revenues; Public Works is responsible for the maintenance of all City-owned lighting districts.

**Fiscal Impact:** Adoption of Resolution 10146 will allow the City to fund the operational and maintenance costs required in the Special Improvement Lighting Districts for the fiscal year.

**ASSESSMENT ANTICIPATED**

The anticipated assessment amount for the Special Improvement Lighting District funds for the next fiscal year is \$1,175,344. After review of the budget and the estimated assessment for Fiscal Year 16/17, the total assessment amount reflects an 18% decrease from the prior fiscal year as the cash balances for the various lighting districts are more than adequate to cover the operational costs for the districts.

<u>BUDGETED</u>	<u>FISCAL YEAR</u>
<u>TOTAL ASSESSMENT</u>	
\$1,955,853	12/13 (26 Districts)
\$1,976,427	13/14 (26 Districts)
\$1,547,428	14/15 (26 Districts)
\$1,428,082	15/16 (26 Districts)
\$1,175,344	16/17 (27 Districts)

The Fiscal Year 16/17 assessment per district is indicated on the SLD Cost Assessment Projection Sheet attached as Exhibit “A” and made a part of Resolution 10146.

**Alternatives:** The City Commission could choose to deny the adoption of Resolution 10146; however, the reduction in services to the community could be hazardous to the safety and welfare of the general public.

**Attachments/Exhibits:** Resolution 10146  
 Exhibit “A” Special Improvement Lighting District –  
 Cost Assessment Projection Sheet  
 Special Lighting District Boundary Map

## RESOLUTION NO. 10146

**A RESOLUTION LEVYING AND ASSESSING THE COST OF MAINTAINING SPECIAL IMPROVEMENT LIGHTING DISTRICTS (SLD'S) NUMBERED 18, 650, 651, 912, 973, 1067A, 1105, 1230, 1255, 1261, 1269, 1270, 1289, 1290, 1294, 1295, 1296, 1297, 1298, 1302, 1303, 1304, 1305, 1306, 1308, 1309 AND 1310 IN THE CITY OF GREAT FALLS, MONTANA, FOR THE FISCAL YEAR BEGINNING JULY 1, 2016 AND ENDING JUNE 30, 2017**

**WHEREAS**, the City Commission declares that the above-captioned Special Improvement Lighting Districts were created, lighting systems installed and that the City intends to continue maintenance of such lighting systems in said SLD's; and

**WHEREAS**, the City Commission declares that each lot or parcel of land contained in each of said SLD's will continue to be benefited by such lighting in the same manner as determined in the creation of each Special Improvement Lighting District; and

**WHEREAS**, on July 19, 2016, the City Commission adopted Resolution 10151, Annual Budget Resolution. The budgeted amounts for maintenance of the City's lighting systems were reviewed and adjusted. The newly adjusted assessment amount totals ONE MILLION ONE HUNDRED SEVENTY-FIVE THOUSAND THREE HUNDRED FORTY-FOUR DOLLARS (\$1,175,344); and

**WHEREAS**, in accordance with § 7-1-4127, MCA, notice was published setting forth that Resolution No. 10146 Levying and Assessing the Cost of Maintaining Special Improvement Lighting Districts (SLD's) Nos. 18, 650, 651, 912, 973, 1067A, 1105, 1230, 1255, 1261, 1269, 1270, 1289, 1290, 1294, 1295, 1296, 1297, 1298, 1302, 1303, 1304, 1305, 1306, 1308, 1309 and 1310 in the City of Great Falls, Montana, would be brought before the Great Falls City Commission for public hearing on August 2, 2016.

**NOW, THEREFORE, BE IT RESOLVED BY THE CITY COMMISSION OF THE CITY OF GREAT FALLS, MONTANA**, that:

### Section 1 – Maintenance Costs Assessed

The cost of maintenance for said lighting systems in the above-captioned SLD's totaling \$1,175,345 be levied and assessed upon the properties in said SLD's.

### Section 2 – Assessment Method

Each lot and parcel within each SLD is hereby assessed a proportion of the maintenance costs attributed to the SLD in the proportion to which its assessable area (individual square feet) bears to the area of the whole special improvement lighting district (total square feet), exclusive of streets, avenues, alleys and public places. An assessment projection summary of each district, describing total cost, is attached hereto and, by this reference, incorporated herein as if fully set

forth. The description of each lot or parcel of land within each SLD and the respective assessments are set forth in the records of the Fiscal Services Department of the City of Great Falls, Montana and by this reference is also incorporated herein as if fully set forth.

Section 3 – Assessment Due Date

Assessments are payable in two payments and will become delinquent at 5:00 o'clock p.m. on November 30, 2016 and May 31, 2017.

PASSED AND ADOPTED by the City Commission of the City of Great Falls, Montana, this 2<sup>nd</sup> day of August, 2016.

\_\_\_\_\_  
Bob Kelly, Mayor

ATTEST:

\_\_\_\_\_  
Lisa Kunz, City Clerk

(Seal of the City)

APPROVED FOR LEGAL CONTENT:

\_\_\_\_\_  
Sara R. Sexe, City Attorney

**SPECIAL IMPROVEMENT LIGHTING DISTRICTS MAINTENANCE BUDGET & ASSESSMENT WORKSHEET  
RESOLUTION #10146 - EXHIBIT "A"**

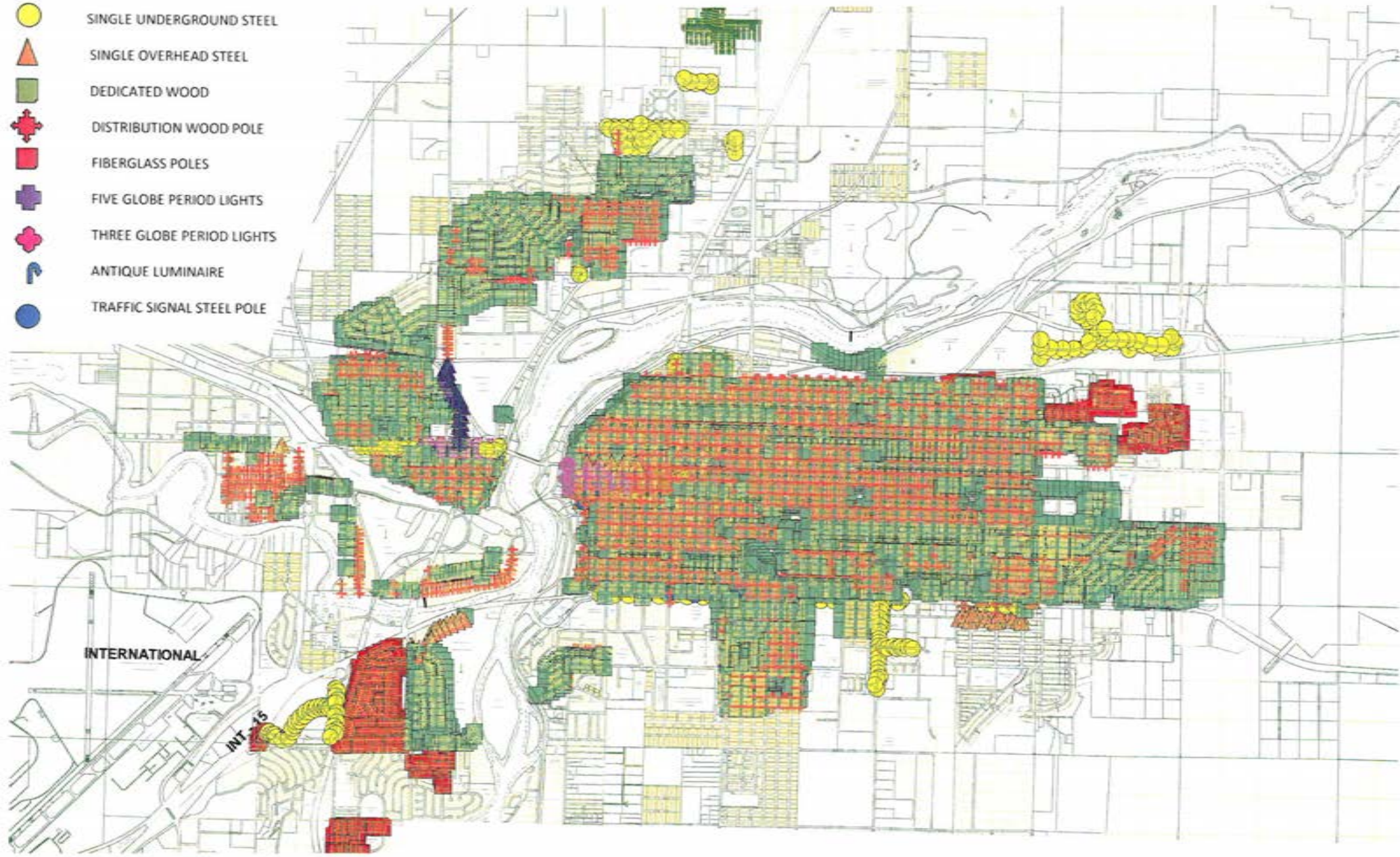
FY 2017

DISTRICT	DISTRICT TYPE	FUND	REQUESTED EXPENSES									FOR ENDING CASH WITHOUT 2017 ASSESSMENT	2017 ASSESSMENT	2016 ASSESSMENT							
			XXXX.00.104 43420	XXXX.00.104 45120	XXXX.00.104 48692	XXXX.00.104 48652	XXXX.31.536 42390	XXXX.31.536 43690	XXXX.31.536 48636	2016 PROJECTED BEGINNING CASH	REQUESTED UTILITY EXPENSE				OTHER MISC EXPENSES	MAPPING SERVICE	FISCAL SERVICE CHARGE	PUBLIC WORKS SUPPLIES & MATERIALS	PUBLIC WORKS OUTSIDE CONTRACTOR	PUBLIC WORKS INTERNAL MAINTENANCE	REQUESTED TOTAL EXPENSES
			0%																		
18	STREET	8402	2,986	2,520	-	-	214	-	-	-	-	-	-	-	-	-	2,734	1,367	2,597	3,329	
650	PERIOD	8403	54,093	5,078	-	-	430	1,472	1,472	1,472	-	-	-	-	-	-	9,925	4,962	9,429	13,719	
651	STREET	8404	4,115	2,075	-	-	176	-	-	-	-	-	-	-	-	-	2,251	1,125	2,138	3,253	
912	STREET	8405	18,446	13,070	-	-	1,107	-	-	-	-	-	-	-	-	-	14,177	7,089	13,468	17,138	
973	STREET	8406	24,331	48	-	-	4	-	-	-	-	-	-	-	-	-	52	26	95	200	
1067A	ALLEY	8407	6,872	4,620	-	-	391	-	-	-	-	-	-	-	-	-	5,011	2,506	4,760	6,095	
1105	STREET	8408	4,864	3,600	-	-	305	-	-	-	-	-	-	-	-	-	3,905	1,953	3,710	4,513	
1230	STREET	8409	516	180	-	-	15	-	-	-	-	-	-	-	-	-	195	98	185	237	
1255	STREET	8410	1,111	360	-	-	31	-	-	-	-	-	-	-	-	-	391	195	371	483	
1261	PERIOD	8411	5,102	4,256	264	-	361	1,234	1,234	1,234	1,234	8,582	4,291	8,153	9,684						
1269	PERIOD	8412	85,224	13,600	720	-	1,152	3,943	3,943	3,943	3,943	27,300	13,650	25,935	31,462						
1270	PERIOD	8413	22,388	5,500	216	-	466	1,594	1,594	1,594	1,594	10,965	5,483	10,417	13,593						
1289	STREET	8414	18,341	12,300	-	-	1,042	-	-	-	-	13,342	6,671	12,675	15,549						
1290	STREET	8415	2,173	1,061	-	-	90	-	-	-	-	1,151	575	1,093	1,491						
1294	SLDA	8416	135,885	131,011	-	718	11,101	-	129	-	-	142,959	71,479	135,811	161,087						
1298	SLDI	8417	72,038	19,200	-	615	1,627	-	-	-	-	21,442	10,721	10,185	24,209						
1295	SLDC	8418	90,277	54,215	-	718	4,594	-	-	-	-	59,526	29,763	56,550	66,239						
1296	SLDR	8419	1,516,486	834,000	-	2,409	70,669	-	4,563	-	-	911,641	455,820	856,943	1,003,207						
1297	SLDT	8420	55,658	27,523	-	666	2,332	-	-	-	-	30,521	15,261	14,498	41,127						
1302	ML3	8430	23,481	600	-	-	51	174	174	174	174	1,173	586	557	1,000						
1304	EC1	8432	9,943	1,800	-	-	153	522	522	522	522	3,518	1,759	1,705	4,192						
1306	ML4	8434	7,165	200	-	-	17	58	58	58	58	391	195	371	500						
1308	ECII & III	8436	11,498	1,221	-	-	103	354	354	354	354	2,386	1,193	1,133	2,184						
1310	ML5	8438	9,497	900	-	-	76	261	261	261	261	1,759	879	835	1,591						
1303	Stone Meadow 1	8440	13,033	480	-	-	41	139	139	139	139	937	469	446	1,000						
1305	Water Tower	8442	11,337	360	-	-	31	104	104	104	104	704	352	334	1,000						
1309	Stone Meadow 2	8444	1,323	500	-	-	42	145	145	145	145	977	489	950	2,525						
ALL DIST	Fund 217	8401	17,596									-									
			2,225,777	1,140,278	1,200	5,125	96,622	10,000	14,691	10,000	1,277,917	638,958	1,175,344	1,430,607							

-18%



-  STREET DEPARTMENT
-  SINGLE UNDERGROUND STEEL
-  SINGLE OVERHEAD STEEL
-  DEDICATED WOOD
-  DISTRIBUTION WOOD POLE
-  FIBERGLASS POLES
-  FIVE GLOBE PERIOD LIGHTS
-  THREE GLOBE PERIOD LIGHTS
-  ANTIQUE LUMINAIRE
-  TRAFFIC SIGNAL STEEL POLE



A MORE DETAILED AND LARGER VERSION OF THIS MAP IS AVAILABLE IN THE OFFICE OF FISCAL SERVICES