

JOURNAL OF COMMISSION WORK SESSION
April 5, 2016

City Commission Work Session
Civic Center, Gibson Room 212

Mayor Kelly presiding

CALL TO ORDER: 5:30 p.m.

CITY COMMISSION MEMBERS PRESENT: Bob Kelly, Bill Bronson, Bob Jones, Fred Burow and Tracy Houck.

STAFF PRESENT: City Manager and Deputy City Manager; City Attorney; Directors of Fiscal Services, Planning and Community Development, Public Works, and Park and Recreation; Police Chief, and the City Clerk and Deputy City Clerk.

*** Action Minutes of the Great Falls City Commission. Please refer to the audio/video recording of this meeting for additional detail. ***

1. PUBLIC COMMENT

There were no comments from the public.

2. INTRODUCTION AND UPDATE FROM NEIGHBORHOOD COUNCIL # 8

Mayor Kelly reported that the northern boundary of Neighborhood Council (NC) 8 is the Missouri River, the southern boundary is Central Avenue, the eastern boundary is 36th Street from Central north to 9th Avenue North then East to 38th Street and north to the Missouri River, the western boundary is 12th Street north from Central Avenue to 7th Avenue North, then east to 15th Street North, and then north to the Missouri River.

Chairperson Karen Grove reported that a representative of the City County Health Department discussed Alive and Fit programs at the last Neighborhood Council meeting. She also commented that Council 8 is working with the Park and Recreation Department on improvements to Memorial Park. The Council meets on the third Thursday of each month at 6:00 pm at the Great Falls Pre Release Center.

Council Secretary Barbara Going added that the Council will be hosting a neighborhood ice cream social in August.

3. RIVER'S EDGE TRAIL UPDATE – RIVER'S EDGE TRAIL BOARD

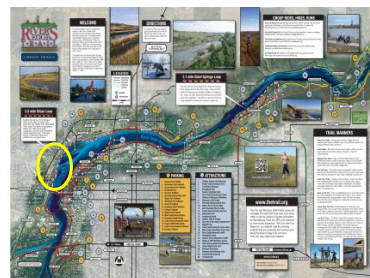
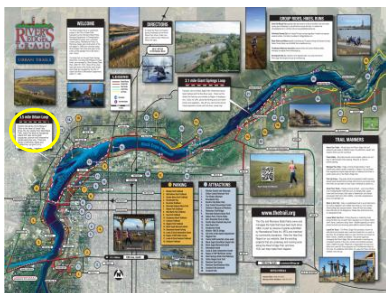
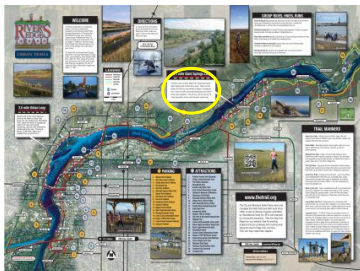
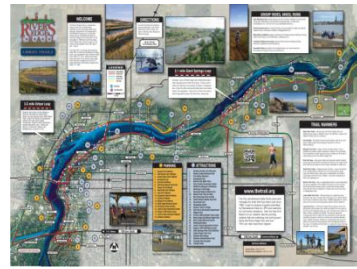
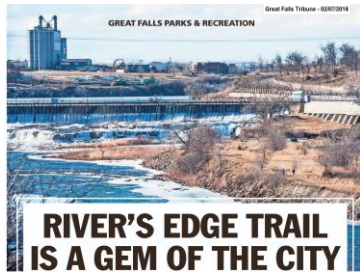
Board member Anders Blewett commented that the board promotes public awareness and utilization of the trail and that fundraising is a huge part of the board. He further commented on trail development efforts and creating additional connections to neighborhoods.

Board member Chuck Jennings provided some history of the Rivers Edge Trail. He noted the first board meeting was on April 23, 1990 and the goal was to assist in the development of several miles of dedicated bike paths. Twenty six years later there is 25 miles of paved trail and

35 miles of dirt trail. He discussed the completion of the bridge and the luminaria walks.

Board member Becky Nelson reported that the luminaria walk will be held on June 18, 2016 starting at Gibson Park to West Bank Park.

Board President John Juras provided and discussed a Power Point presentation on the River's Edge Trail as follows:





WEST BANK PARK DEVELOPMENT PROJECTS AND FUNDING
 TOTAL PROJECT COST = \$116,220
 REQUESTED RTI = \$45,000

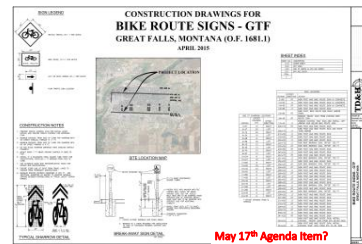
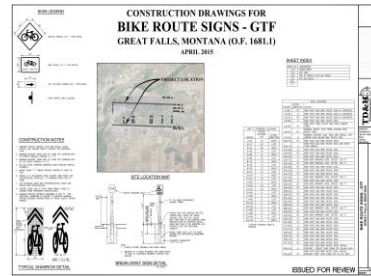
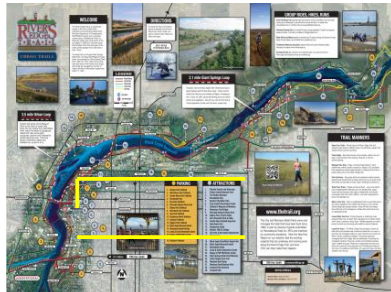
1 NEW WEST BANK PARKING LOT - \$10,000 200' x 100' RTI - \$10,000	4 TREE PROTECTION AND LANDSCAPING - \$20,000 100' x 100' RTI - \$10,000
2 WEST SIDE TRAIL AND IMPROVEMENTS - \$17,000 200' x 100' RTI - \$10,000	5 TRAILWAY SIGNALS - \$10,000 100' x 100' RTI - \$10,000
3 WEST BANK WALK ACCESSIBLE WALKWAY - \$14,000 100' x 100' RTI - \$10,000	



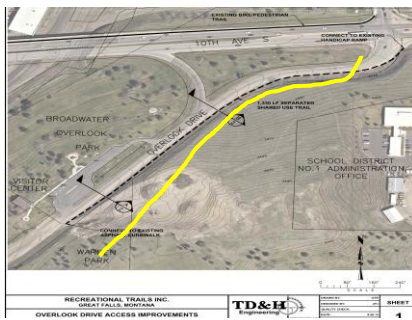
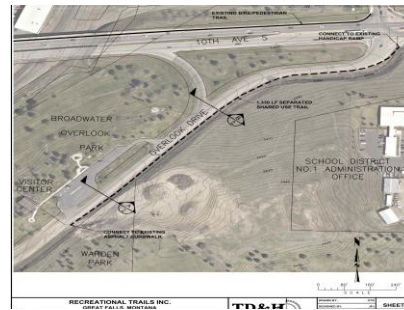
WEST BANK PARK DEVELOPMENT PROJECTS AND FUNDING
 TOTAL PROJECT COST = \$116,220
 REQUESTED RTI = \$45,000

1 NEW WEST BANK PARKING LOT - \$10,000 200' x 100' RTI - \$10,000	4 TREE PROTECTION AND LANDSCAPING - \$20,000 100' x 100' RTI - \$10,000
2 WEST SIDE TRAIL AND IMPROVEMENTS - \$17,000 200' x 100' RTI - \$10,000	5 TRAILWAY SIGNALS - \$10,000 100' x 100' RTI - \$10,000
3 WEST BANK WALK ACCESSIBLE WALKWAY - \$14,000 100' x 100' RTI - \$10,000	

RTI - \$45,000



May 17th Agenda Item?
 June 15th Under Contract



**CIVIL DRAWINGS FOR CITY OF GREAT FALLS - O.F.
RIVER DRIVE SOUTH TRAIL EXTENSION
GREAT FALLS, MONTANA
NOVEMBER, 2015**

PROJECT LOCATION

GENERAL NOTES

1. THE INFORMATION AND DESIGN INFORMATION CONTAINED HEREIN IS THE PROPERTY OF TDM&C ENGINEERS, INC. AND IS NOT TO BE REPRODUCED, COPIED, OR TRANSMITTED IN ANY FORM OR BY ANY MEANS, ELECTRONIC OR MECHANICAL, INCLUDING PHOTOCOPYING, RECORDING, OR BY ANY INFORMATION STORAGE AND RETRIEVAL SYSTEM, WITHOUT THE WRITTEN PERMISSION OF TDM&C ENGINEERS, INC.
2. THE INFORMATION AND DESIGN INFORMATION CONTAINED HEREIN IS FOR THE USE OF THE CITY OF GREAT FALLS, MONTANA, AND IS NOT TO BE USED FOR ANY OTHER PROJECT WITHOUT THE WRITTEN PERMISSION OF TDM&C ENGINEERS, INC.
3. THE INFORMATION AND DESIGN INFORMATION CONTAINED HEREIN IS FOR THE USE OF THE CITY OF GREAT FALLS, MONTANA, AND IS NOT TO BE USED FOR ANY OTHER PROJECT WITHOUT THE WRITTEN PERMISSION OF TDM&C ENGINEERS, INC.

GENERAL NOTES

1. THE INFORMATION AND DESIGN INFORMATION CONTAINED HEREIN IS THE PROPERTY OF TDM&C ENGINEERS, INC. AND IS NOT TO BE REPRODUCED, COPIED, OR TRANSMITTED IN ANY FORM OR BY ANY MEANS, ELECTRONIC OR MECHANICAL, INCLUDING PHOTOCOPYING, RECORDING, OR BY ANY INFORMATION STORAGE AND RETRIEVAL SYSTEM, WITHOUT THE WRITTEN PERMISSION OF TDM&C ENGINEERS, INC.

2. THE INFORMATION AND DESIGN INFORMATION CONTAINED HEREIN IS FOR THE USE OF THE CITY OF GREAT FALLS, MONTANA, AND IS NOT TO BE USED FOR ANY OTHER PROJECT WITHOUT THE WRITTEN PERMISSION OF TDM&C ENGINEERS, INC.

3. THE INFORMATION AND DESIGN INFORMATION CONTAINED HEREIN IS FOR THE USE OF THE CITY OF GREAT FALLS, MONTANA, AND IS NOT TO BE USED FOR ANY OTHER PROJECT WITHOUT THE WRITTEN PERMISSION OF TDM&C ENGINEERS, INC.

PROJECT LOCATION



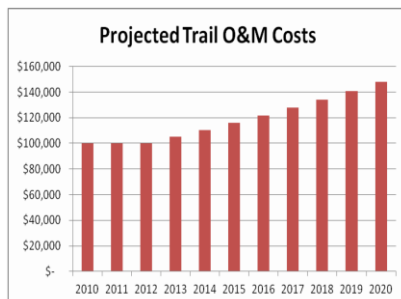
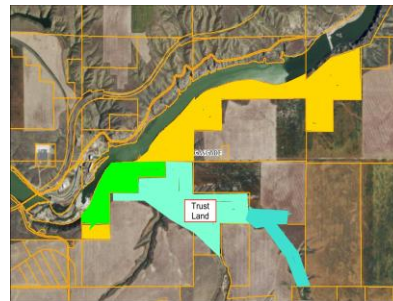
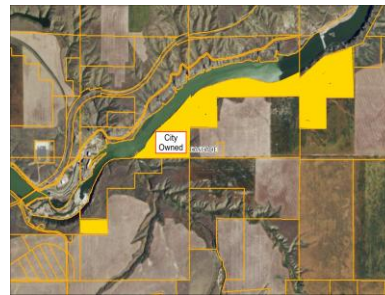
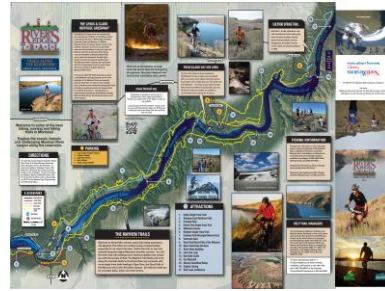
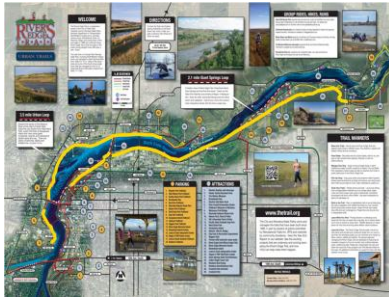
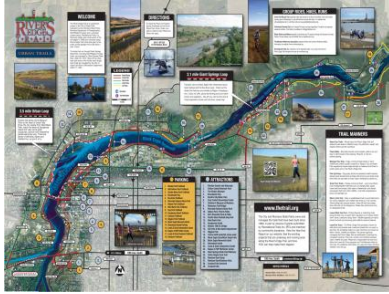
BLACK EAGLE PARK CONNECTION

SMELTER HILL CONNECTION

**BIG STACK BIKE PARK
"RISING FROM THE ASHES"**

SUN RIVER LEVY TO WADSWORTH PARK

SUN RIVER LEVY TO WADSWORTH PARK



THE RIVER'S EDGE TRAIL YEAR-END LETTER

Dear River's Edge Trail Enthusiast,

For 25 years, the Great Falls community has facilitated the development of our most treasured asset, the River's Edge Trail. As the new year approaches, our need for individual and corporate investments to help fund the growth and excellence of the Trail continues. Between 2015 and 2017, approximately \$22,000 of private donations are bringing \$4.6 million of grants to design, construct, repair and maintain the River's Edge Trail.

Immeasurable thanks to Doug and Karen Wicks for the determination, talent and hard work they have put into establishing the Trail. If not for their 25 years of being the driving force behind the Trail, it is doubtful that we would have the excellent trail network we now enjoy. As they step back from their work on the Trail to move into enjoying travel and relaxation, we think of how far the Trail has come, and how many more great opportunities are within our reach.

We are also very grateful for 25 years of encouragement and generosity from a community that is willing to help us make the River's Edge Trail the best trail system anywhere.

Board member Nelson requested that the Commission consider an extra \$20,000 during the upcoming budget for needed maintenance tasks and major projects.

Commissioner Burow suggested the Board consider fundraising to help offset maintenance costs.

Deputy City Manager Jennifer Reichelt noted that the Board voted to fund staff positions to help the trail coordinator with trail maintenance.

Board member Blewett commented that, as a policy matter, one of the purposes of the Board presenting here today is to try to identify where this trail fits into the public assets. He understands it is the job of the Commission to establish priorities for funding. The Board is saying this trail is something that touches everybody in this community, and that its priority with the Commission should be elevated.

A specific thing the Board is doing and did last year as well is funded a staff position at Park and Recreation to do the trail work. This year the Board has committed \$20,000 to Park and Recreation to fund a temporary staff position to assist the trail coordinator. The Board is hoping to focus on replacing the deteriorated surfaces and replacing the asphalt with concrete with the maintenance monies.

Mayor Kelly noted that his wife sits on the Board and he is pretty aware of the funding the Board provides. From an educational standpoint he suggested it would benefit everyone if the Board provided a copy of its yearly funding. Board President Juris agreed that would be helpful and would be provided to the Commission.

Park and Recreation Director Joe Petrella reported that a commitment from the City is required in order to match funds for federal grants. He added that the Board has done a great job with fundraising.

Board President Juris introduced fellow board members, Becky Nelson, Ron Nelson, Anders Blewett, Bruce Pollington, Chuck Jennings, Erin Madison Granger, Kelley Aline and Jenn Reichelt.

Mayor Kelly thanked the River's Edge Trail Board.

4. PARKING UPDATE REPORT – PARKING ADVISORY COMMISSION

Parking Advisory Commission (PAC) Chairman Bill Mintsiveris explained that the PAC created a new mission statement with a bigger focus on customer service. The PAC is still in the discovery phase of the process. It has been cumbersome going through all of the financials of the parking system and deciphering contractual agreements made in the past. The PAC is requesting the public's input by completing an online survey. Also, a public listening session will be held in the Civic Center on Thursday, April 7. After the PAC gets a grip on the financials, it will add in the public's feedback, and then set forth several proposals for City Commission consideration by the end of August.

Chairman Mintsiveris also read the new mission statement of the PAC.

Commissioner Burow stated the PAC has been doing a good job, but making the parking program better is the challenge.

Commissioner Houck applauded the PAC on identifying the parking needs of those who shop, work and live downtown and for taking care of the needs of the City.

Chairman Mintsiveris introduced fellow members, Dave Campbell, Dave Snuggs, Brad Livingston and Joan Redeen.

Planning and Community Development Director Craig Raymond concluded that the PAC is looking at what other communities are doing, and different incentives in order to meet the parking demands.

Director Raymond introduced the new Planning and Community Development Deputy Director, Tom Micuda.

5. DISCUSSION OF POTENTIAL UPCOMING WORK SESSION TOPICS

Mayor Kelly announced that he is moving forward with scheduling a Town Hall meeting for a public discussion regarding fireworks. He hoped to have representation from the Police and Fire Departments at the meeting.

City Manager Greg Doyon reported that Neighborhood Council 9 will make introductions and provide its update to the Commission and the City County Health Department will discuss its Annual Report and Tobacco Prevention Program at the April 19th work session. The Park Master Plan and 3rd Quarter Budget Meeting will be presented at the May 3rd work session.

Commissioner Bronson added that he will briefly discuss the Library Ordinance at the next work session. The Ordinance will be on the agenda that evening for first reading.

ADJOURN

There being no further discussion, Mayor Kelly adjourned the informal work session of April 5, 2016 at 6:29 p.m.