

November 30, 2023

Mr. Greg Doyon
City Manager - City of Great Falls
PO Box 5021
Great Falls, MT 59403-5021

RE: Potential Land Swap Proposal

Dear Mr. Doyon,

Included herein is a draft land swap proposal to exchange privately-owned property for two separate City of Great Falls parcels. The properties in question are further detailed below. I hereby propose to swap Parcel A for Parcels B and C.

Parcel A: Privately-Owned Parcel

Legal Description: Marks 14, 14K, 14L, 14M of Plat 16-04; Section 36, T21N, R03E
Property Address: N/A
Geocode: 02-3138-36-1-02-02-0000
Owner: Charlie Mesler
Property Size: 10.811 acres
Exhibit: Refer to Exhibit A

Parcel B: City-Owned Parcel

Legal Description: Lot 1B of Block 2 of Riverview Tracts #4; Section 1, T20N, R03E
Property Address: 1610 6th St. NE, Great Falls, MT 59404
Geocode: 02-3015-01-2-04-05-0000
Owner: City of Great Falls
Property Size: 1.70 acres
Exhibit: Refer to Exhibit B

Parcel C: City-Owned Parcel

Legal Description: Lot 1 of Cenex Subdivision; Section 33, T21N, R04E
Property Address: N/A
Geocode: 02-3139-33-4-01-01-0000
Owner: City of Great Falls
Property Size: 13.47 acres
Exhibit: Refer to Exhibit C

Benefits of Proposed Land Swap

1. **City Operation Consolidation:** The proposed land swap allows for the City to consolidate its existing operations and reduce travel distances between offices. Parcel A is located directly adjacent to the existing City of Great Falls Public Works Complex and allows for the expansion of the existing public works complex. As the only undeveloped property in the vicinity of the Public Works Complex, Parcel A will allow the City to reduce congestion within the existing complex, consolidate operations, and allow for future expansion of operations as necessitated by

City and operation growth. Parcel A is the most viable option for future growth of the City PWD Complex and allows the City to expand without splitting operations throughout multiple parcels around the City. Additionally, transitioning the Park & Rec Department to the newly acquired Parcel A will allow the City to maintain maintenance staff and equipment in the direct vicinity of operations; reducing impacts associated with travel and availability. Parcel A allows for immediate incorporation into the PWD Complex as the parcel is directly adjacent to the City's operations and lies at elevations that allow for expansion with minimal City input.

2. **Reduced Congestion:** Expansion of the City operations into Parcel A will reduce overall congestion within the existing PWD Complex and will allow for additional laydown area, equipment storage, and more convenient accessibility to reduce congestion and vehicular conflicts associated with the limited available space. Additionally, existing City infrastructure at the PWD Complex allows for operation expansion without costly maintenance building/shop construction or infrastructure extensions.
3. **Land Use Maximization:** Following the completion of the land swap, Parcels B & C could then be developed by private individuals to maximize land use of existing parcels and expand the City's tax base. It is anticipated that Parcel B will be conveyed to the Montana Refining Company to continue to expand their operations within the City. As Parcel B lies adjacent to existing refinery rail spurs, it offers immediate benefits.

Parcel C is currently located adjacent to City of Great Falls water infrastructure and could potentially be annexed into the City with the installation of a lift station to convey wastewater. It is anticipated that Parcel C will be developed to house a new company within the industrially-zoned parcel while the vacant Parcel A can then be utilized by the City.

4. **Public Safety & Security:** Parcel B is currently accessed via an easement through the privately-owned Montana Refinery parcel at 500 17th Ave. NE. Conveying this property from the City's possession will allow for the parcel to be incorporated into the existing refinery operations and will remove potential pedestrian/vehicle conflicts associated with City-owned vehicles traversing the existing private parking lot. Additionally, consolidating operations within the PWD complex will allow for increased security of stored materials and equipment and will reduce time and fuel consumption associated with accessing the property at a separate location.

In summary, I feel the land swap proposal included herein positively benefits all parties and allows for future expansion of the City's operations at an economically practical location while allowing for further private sector growth within the City. Enclosed are aerial maps detailing the locations of each proposed parcel.

Please feel free to call me at 406-899-6097 or Kevin May at Big Sky Civil & Environmental (406-727-2185) with any questions or comments related to this proposal. We would be happy to sit down with you and staff to further discuss. Thank you.

Sincerely,

Charlie Mesler



PARCEL B -
CITY-OWNED
1.70 ACRES

TITLE:

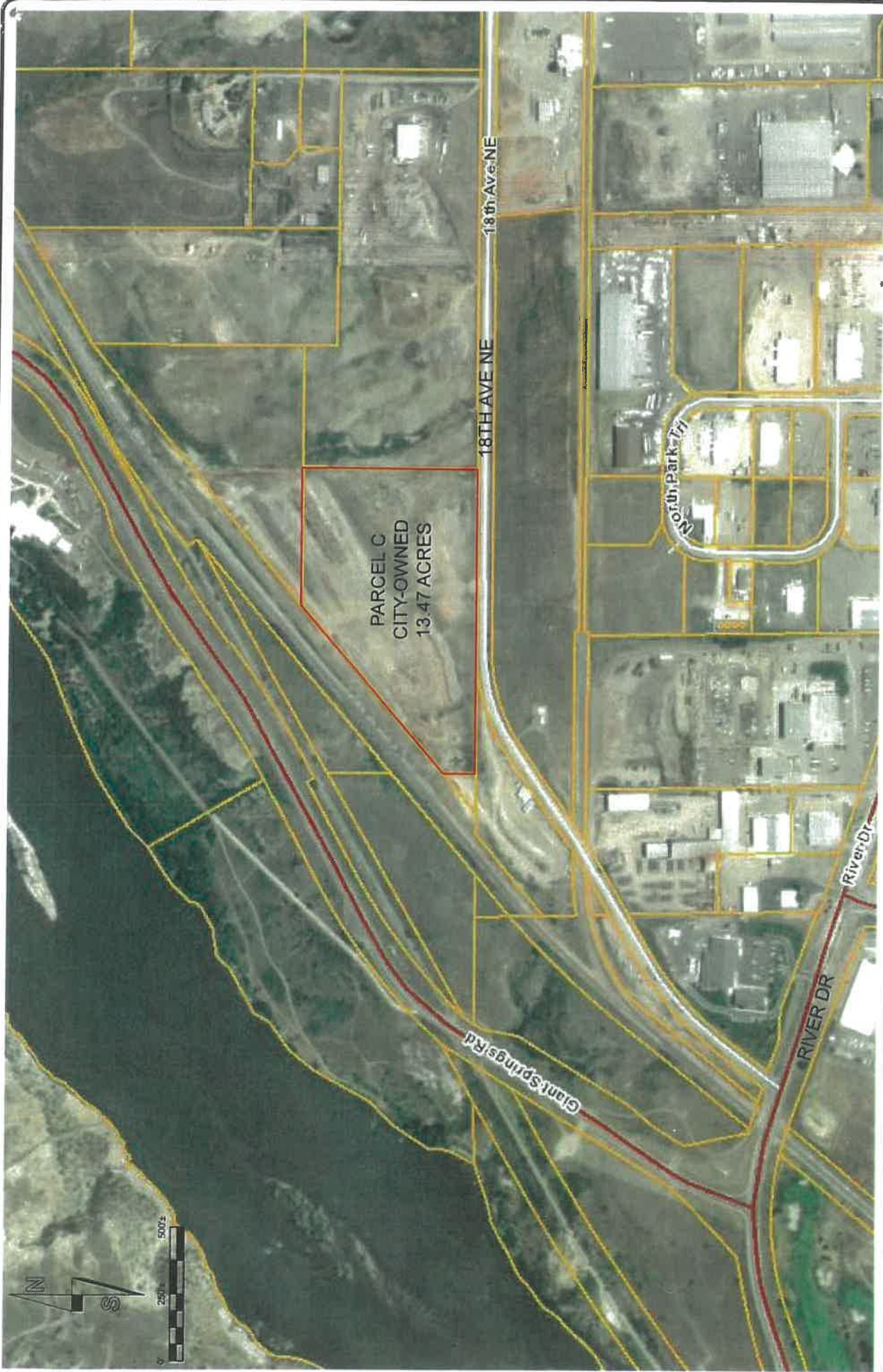
EXHIBIT B
CITY-OWNED PROPERTY

PROJECT:

MESLER LAND SWAP
PROPOSAL



ENGINEERS - PLANNERS - DESIGNERS -
LAND SURVEYORS - ENVIRONMENTAL SPECIALISTS
1324 13th Ave. SW
P. O. BOX 3625
GREAT FALLS, MT 59483
(406) 772-3656
www.bsgsbyce.com



ENGINEERS - PLANNERS - DESIGNERS -
 LAND SURVEYORS - ENVIRONMENTAL SPECIALISTS
 1324 13th Ave. SW
 GREY P.O. BOX 3625
 GRAND RAPIDS, MI 49503-0625
 (486) 722-2185 OFFICE
 (486) 727-3656 FAX
 www.bsc&e.com



PROJECT:
 MESLER LAND SWAP
 PROPOSAL

TITLE:
 EXHIBIT C
 CITY-OWNED PROPERTY

OBJECTID	BASEMAP	PARCEL_N	GEOCODE	SOURCE	MAPPER	OwnCode	OwnerClas	DateCreat	DateMod
1102	12386	64800	2.3E+15	COS or plat	City of Gre	40260	Local Gove	20021031	20021031
2130	14984	120950	2.3E+15	COS or plat	City of Gre	40220	Local Gove	20020806	20020806
2137	14564	121500	2.3E+15	COS or plat	City of Gre	40220	Local Gove	20051105	20190617
2174	15157	124350	2.3E+15	COS or plat	City of Gre	40220	Local Gove	20020731	20190617
2307	15089	131900	2.3E+15	COS or plat	City of Gre	40260	Local Gove	20020904	20020904
2720	15762	153450	2.3E+15	COS or plat	City of Gre	40260	Local Gove	20020731	20020731
2788	15911	158200	2.3E+15	COS or plat	City of Gre	40220	Local Gove	20020806	20190607
2817	16431	160750	2.3E+15	COS or plat	City of Gre	40220	Local Gove	20020805	20190612
2832	16502	161950	2.3E+15	COS or plat	City of Gre	40220	Local Gove	20020805	20190612
3365	17552	191200	2.3E+15	COS or plat	City of Gre	40220	Local Gove	20020802	20190607
3374	17505	191850	2.3E+15	COS or plat	City of Gre	40220	Local Gove	20020802	20190606
3376	17487	192000	2.3E+15	COS or plat	City of Gre	40220	Local Gove	20020802	20190606
3395	18385	193500	2.3E+15	COS or plat	City of Gre	40220	Local Gove	20020802	20190604
3401	18408	194000	2.3E+15	COS or plat	City of Gre	40220	Local Gove	20020802	20190604
3402	18030	194100	2.3E+15	COS or plat	City of Gre	40220	Local Gove	20020802	20190604
3449	18146	197000	2.3E+15	COS or plat	City of Gre	40220	Local Gove	20051105	20190604
4458	21762	255200	2.3E+15	COS or plat	City of Gre	40260	Local Gove	20020809	20190521
4808	24687	273250	2.3E+15	Deed COG	City of Gre	40220	Local Gove	20020807	20020807
4811	24806	273450	2.3E+15	Deed COG	City of Gre	40220	Local Gove	20020807	20020807
5232	15808	298750	2.3E+15	COS or plat	City of Gre	40220	Local Gove	20030424	20190603
5360	14956	306550	2.3E+15	COS or plat	City of Gre	40260	Local Gove	20030424	20190603
5524	39158	2022040	2.3E+15	COS or plat	City of Gre	40260	Local Gove	20220621	20220621
5750	38310	328300	2.3E+15	COS or plat	City of Gre	40260	Local Gove	20020924	20190523
6174	36708	355750	2.3E+15	COS or plat	City of Gre	40260	Local Gove	20030326	20190524
6633	24266	404700	2.3E+15	COS or plat	City of Gre	40260	Local Gove	20021009	20220728
6864	32255	429400	2.3E+15	COS or plat	City of Gre	40260	Local Gove	20020129	20020129
6883	33467	429472	2.3E+15	COS or plat	City of Gre	40260	Local Gove	20020129	20020129
6927	34158	429841	2.3E+15	COS or plat	City of Gre	40220	Local Gove	20020129	20020129
6992	28696	431000	2.3E+15	COS or plat	City of Gre	40220	Local Gove	20030212	20030212
7880	17152	512900	2.3E+15	COS or plat	City of Gre	40260	Local Gove	20021001	20190516
7881	17485	512950	2.3E+15	COS or plat	City of Gre	40220	Local Gove	20051024	20190516
8010	24423	526000	2.3E+15	COS or plat	City of Gre	40220	Local Gove	20030407	20030407
8016	19509	526060	2.3E+15	COS or plat	City of Gre	40260	Local Gove	20030407	20030407
8024	19740	526160	2.3E+15	COS or plat	City of Gre	40220	Local Gove	20030407	20030407
8041	19031	526300	2.3E+15	COS or plat	City of Gre	40220	Local Gove	20030326	20190516
8042	36709	526330	2.3E+15	COS or plat	City of Gre	40220	Local Gove	20030327	20030327
8044	36702	526360	2.3E+15	COS or plat	City of Gre	40220	Local Gove	20030327	20030327
8426	28540	550450	2.3E+15	COS or plat	City of Gre	40260	Local Gove	20030220	20030220
8427	28548	550460	2.3E+15	COS or plat	City of Gre	40260	Local Gove	20030224	20030224
8430	25745	551515	2.3E+15	COS or plat	City of Gre	40220	Local Gove	20020218	20151218
8431	25760	551520	2.3E+15	COS or plat	City of Gre	40220	Local Gove	20090519	20090519
8954	38923	607230	2.3E+15	COS or plat	City of Gre	40220	Local Gove	20150105	20150112
9020	15443	614610	2.3E+15	COS or plat	City of Gre	40260	Local Gove	20030429	20030429
10403	28631	685550	2.3E+15	COS or plat	City of Gre	40220	Local Gove	20030325	20030325
10684	31131	709100	2.3E+15	COS or plat	City of Gre	40260	Local Gove	20020305	20220801
10920	23521	740350	2.3E+15	COS or plat	City of Gre	40260	Local Gove	20021016	20021016

CITY_LIMIT	COS_PLAT	SPLIT	MISC_NOT	LEGAL_OWNER_NAME
IN_CITY				CITY OF GREAT FALLS
IN_CITY				CITY OF GREAT FALLS
IN_CITY				CITY OF GREAT FALLS
IN_CITY				CITY OF GREAT FALLS
IN_CITY				CITY OF GREAT FALLS
IN_CITY				CITY OF GREAT FALLS
IN_CITY				CITY OF GREAT FALLS
IN_CITY				CITY OF GREAT FALLS
IN_CITY	1974 PL	SPLIT 2009	COMBININ	CITY OF GREAT FALLS
IN_CITY				CITY OF GREAT FALLS
IN_CITY				CITY OF GREAT FALLS
IN_CITY				CITY OF GREAT FALLS
IN_CITY				CITY OF GREAT FALLS
IN_CITY				CITY OF GREAT FALLS ETAL
IN_CITY		SPLIT 2009	COMBININ	CITY OF GREAT FALLS ETAL
IN_CITY				CITY OF GREAT FALLS
IN_CITY				CITY OF GREAT FALLS
IN_CITY				CITY OF GREAT FALLS
IN_CITY				CITY OF GREAT FALLS
IN_CITY				CITY OF GREAT FALLS
IN_CITY				CITY OF GREAT FALLS
IN_CITY		2022-56	SPLIT LOTS	CITY OF GREAT FALLS
IN_CITY				CITY OF GREAT FALLS
IN_CITY				CITY OF GREAT FALLS
IN_CITY	2021-24	2022-108;	VACATE RC	CITY OF GREAT FALLS
IN_CITY				CITY OF GREAT FALLS
IN_CITY				CITY OF GREAT FALLS
IN_CITY	PL 0597			CITY OF GREAT FALLS
IN_CITY	PL 2995			CITY OF GREAT FALLS
IN_CITY				CITY OF GREAT FALLS
IN_CITY				CITY OF GREAT FALLS
IN_CITY	PL 1892			CITY OF GREAT FALLS
IN_CITY	PL 1892			CITY OF GREAT FALLS
IN_CITY				CITY OF GREAT FALLS
IN_CITY	PL 1892, COS 2846			CITY OF GREAT FALLS
IN_CITY	PL 1892			CITY OF GREAT FALLS
IN_CITY	PL 1493			CITY OF GREAT FALLS
IN_CITY				CITY OF GREAT FALLS
IN_CITY				CITY OF GREAT FALLS
IN_CITY	PL 2015-45	SPLIT 2016	AGGREGA	CITY OF GREAT FALLS
IN_CITY				CITY OF GREAT FALLS
IN_CITY	PL 2014-35	SPLIT 2015	PLAT AGG	CITY OF GREAT FALLS
IN_CITY				CITY OF GREAT FALLS
IN_CITY	PL 3200			CITY OF GREAT FALLS
IN_CITY		2022-120	DEDICATE	CITY OF GREAT FALLS
IN_CITY				CITY OF GREAT FALLS

10979	1566	740635	2.31E+15	COS or plat	City of Gre	40260	Local Gove	20110119	20110119
11182	8570	750100	2.3E+15	COS or plat	City of Gre	40220	Local Gove	20021023	20190515
11327	12484	771900	2.3E+15	COS or plat	City of Gre	40260	Local Gove	20030414	20190516
11779	26199	822200	2.3E+15	Deed COG	City of Gre	40220	Local Gove	20100528	20100528
12232	24972	886750	2.3E+15	Deed COG	City of Gre	40220	Local Gove	20030402	20200522
12830	9933	954700	2.3E+15	COS or plat	City of Gre	40260	Local Gove	20021121	20021121
13196	38506	972900	2.3E+15	COS or plat	City of Gre	40220	Local Gove	20021212	20021212
13200	28998	975600	2.3E+15	COS or plat	City of Gre	40220	Local Gove	20030325	20190515
13201	29375	975800	2.3E+15	COS or plat	City of Gre	40260	Local Gove	20030325	20030325
13295	4057	989650	2.31E+15	COS or plat	City of Gre	40260	Local Gove	20020424	20020424
13629	36662	1029650	2.31E+15	COS or plat	City of Gre	40220	Local Gove	20121227	20150105
14143	28612	1088800	2.3E+15	COS or plat	City of Gre	40220	Local Gove	20100518	20100518
14144	28609	1088850	2.3E+15	COS or plat	City of Gre	40260	Local Gove	20100518	20100518
14506	31757	1123500	2.3E+15	COS or plat	City of Gre	40220	Local Gove	20020210	20020210
14742	13207	1150350	2.3E+15	COS or plat	City of Gre	40260	Local Gove	20021126	20021126
15440	12121	1240150	2.3E+15	COS or plat	City of Gre	40260	Local Gove	20021206	20190710
15443	2428	1242110	2.31E+15	COS or plat	City of Gre	40260	Local Gove	20020507	20020507
16105	7189	1312650	2.3E+15	COS or plat	City of Gre	40260	Local Gove	20030408	20030408
16198	6171	1322800	2.31E+15	COS or plat	City of Gre	40260	Local Gove	20020506	20020506
16813	5573	1386250	2.31E+15	COS or plat	City of Gre	40260	Local Gove	20020510	20190513
17276	3711	1438400	2.31E+15	COS or plat	City of Gre	40220	Local Gove	20020520	20020520
17365	3415	1450150	2.31E+15	Deed COG	City of Gre	40220	Local Gove	20020522	20020522
17609	2849	1474300	2.31E+15	COS or plat	City of Gre	40260	Local Gove	20030911	20030911
17616	4657	1475600	2.31E+15	COS or plat	City of Gre	40220	Local Gove	20020617	20020617
17617	6034	1475700	2.31E+15	COS or plat	City of Gre	40220	Local Gove	20020617	20020617
17727	38581	1482100	2.3E+15	COS or plat	City of Gre	40220	Local Gove	20020618	20020618
17750	27606	1487400	2.3E+15	COS or plat	City of Gre	40260	Local Gove	20030313	20080109
17792	2753	1488022	2.31E+15	COS or plat	City of Gre	40220	Local Gove	20020430	20020430
17987	3517	1488610	2.31E+15	COS or plat	City of Gre	40220	Local Gove	20020426	20020426
17991	4238	1488675	2.31E+15	Deed COG	City of Gre	40220	Local Gove	20040203	20040203
17993	3329	1488701	2.31E+15	COS or plat	City of Gre	40260	Local Gove	20020520	20190513
18056	6800	1488800	2.31E+15	COS or plat	City of Gre	40220	Local Gove	20020612	20020612
18302	27632	1512400	2.3E+15	COS or plat	City of Gre	40260	Local Gove	20030303	20030303
18658	37850	1556700	2.3E+15	COS or plat	City of Gre	40260	Local Gove	20021217	20021217
19086	22277	1602800	2.3E+15	COS or plat	City of Gre	40260	Local Gove	20030203	20190507
19143	24789	1609400	2.3E+15	COS or plat	City of Gre	40260	Local Gove	20030128	20190507
20569	7742	1775150	2.3E+15	COS or plat	City of Gre	40260	Local Gove	20030416	20030416
20692	27010	1789800	2.3E+15	COS or plat	City of Gre	40220	Local Gove	20020305	20020305
20693	25906	1790000	2.3E+15	COS or plat	City of Gre	40220	Local Gove	20020305	20020305
20694	25955	1790200	2.3E+15	COS or plat	City of Gre	40220	Local Gove	20020305	20190503
21629	8811	1876100	2.3E+15	Deed COG	City of Gre	40260	Local Gove	20020624	20190503
21632	7919	1876400	2.3E+15	Deed COG	City of Gre	40220	Local Gove	20020618	20190503
21633	36372	1876500	2.3E+15	COS or plat	City of Gre	40260	Local Gove	20030414	20110610
21634	36370	1876510	2.3E+15	COS or plat	City of Gre	40220	Local Gove	20080711	20080815
21647	36496	1878400	2.3E+15	COS or plat	City of Gre	40260	Local Gove	20030414	20061011
21648	36396	1878450	2.3E+15	Deed COG	City of Gre	40260	Local Gove	20061011	20190503
21660	8276	1879850	2.3E+15	COS or plat	City of Gre	40260	Local Gove	20030407	20030407

IN_CITY	PL 2004-33	CITY OF GREAT FALLS
IN_CITY		CITY OF GREAT FALLS
IN_CITY		CITY OF GREAT FALLS
IN_CITY	SPLIT 2010 SPLIT CREA	CITY OF GREAT FALLS
IN_CITY		CITY OF GREAT FALLS
IN_CITY		CITY OF GREAT FALLS
IN_CITY		CITY OF GREAT FALLS
IN_CITY		CITY OF GREAT FALLS
IN_CITY		CITY OF GREAT FALLS
IN_CITY	PL 2014-4C SPLIT 2015 PLAT SPLIT	CITY OF GREAT FALLS
IN_CITY		CITY OF GREAT FALLS
IN_CITY	1977 AMPL	CITY OF GREAT FALLS
IN_CITY		CITY OF GREAT FALLS
IN_CITY		CITY OF GREAT FALLS
IN_CITY		CITY OF GREAT FALLS
IN_CITY		CITY OF GREAT FALLS
IN_CITY		CITY OF GREAT FALLS
IN_CITY		CITY OF GREAT FALLS
IN_CITY		CITY OF GREAT FALLS
IN_CITY		CITY OF GREAT FALLS
IN_CITY	PL 3800	CITY OF GREAT FALLS
IN_CITY	PL 3800	CITY OF GREAT FALLS
IN_CITY		CITY OF GREAT FALLS
IN_CITY	PL 2007-61	CITY OF GREAT FALLS
IN_CITY	PL 2599	CITY OF GREAT FALLS
IN_CITY	PL 3799	CITY OF GREAT FALLS
IN_CITY		CITY OF GREAT FALLS
IN_CITY	PL 2700	CITY OF GREAT FALLS
IN_CITY	PL 4196	CITY OF GREAT FALLS
IN_CITY		CITY OF GREAT FALLS
IN_CITY		CITY OF GREAT FALLS
IN_CITY	PL 2016-32 SPLIT 2017 PLAT AMEI	CITY OF GREAT FALLS
IN_CITY		CITY OF GREAT FALLS
IN_CITY		CITY OF GREAT FALLS
IN_CITY		CITY OF GREAT FALLS
IN_CITY		CITY OF GREAT FALLS
IN_CITY		CITY OF GREAT FALLS
IN_CITY		CITY OF GREAT FALLS
IN_CITY	SPLIT 2009 SPLITTING	CITY OF GREAT FALLS
IN_CITY	COS 4031 SPLIT 2009 SPLITTING	CITY OF GREAT FALLS
IN_CITY		CITY OF GREAT FALLS
IN_CITY		CITY OF GREAT FALLS
IN_CITY		CITY OF GREAT FALLS

21664	8288	1880285	2.3E+15	COS or plat	City of Gre	40220	Local Gove	20030408	20030408
21666	9056	1880299	2.3E+15	Deed COG	City of Gre	40220	Local Gove	20030414	20200821
21682	36360	1881495	2.3E+15	Deed COG	City of Gre	40260	Local Gove	20020722	20020722
21685	8651	1882000	2.3E+15	Deed COG	City of Gre	40260	Local Gove	20030415	20030415
21690	8960	1883700	2.3E+15	COS or plat	City of Gre	40260	Local Gove	20030421	20030421
21694	37999	1885050	2.3E+15	COS or plat	City of Gre	40260	Local Gove	20030428	20030428
21702	36690	1886000	2.3E+15	Deed COG	City of Gre	40260	Local Gove	20030327	20030327
21703	36687	1886025	2.3E+15	Deed COG	City of Gre	40260	Local Gove	20061011	20061011
21704	36679	1886030	2.3E+15	Deed COG	City of Gre	40220	Right of W.	20110606	20230725
21707	16683	1886100	2.3E+15	Deed COG	City of Gre	40220	Local Gove	20030326	20190503
21709	36705	1886300	2.3E+15	Deed COG	City of Gre	40260	Local Gove	20030327	20030327
21710	36701	1886325	2.3E+15	Deed COG	City of Gre	40260	Local Gove	20030328	20190503
21711	36508	1886500	2.3E+15	Deed COG	City of Gre	40260	Local Gove	20030414	20110610
21712	36686	1886900	2.3E+15	Deed COG	City of Gre	40260	Local Gove	20030328	20190503
21715	17893	1887600	2.3E+15	COS or plat	City of Gre	40220	Local Gove	20030326	20030326
21719	16319	1888304	2.3E+15	COS or plat	City of Gre	40220	Local Gove	20030326	20030326
21722	36713	1888600	2.3E+15	Deed COG	City of Gre	40260	Local Gove	20051114	20190503
21723	29152	1892900	2.3E+15	COS or plat	City of Gre	40260	Local Gove	20030321	20030321
21724	28533	1892920	2.3E+15	Deed COG	City of Gre	40220	Local Gove	20030324	20030324
21726	28525	1892930	2.3E+15	COS or plat	City of Gre	40220	Local Gove	20030326	20030326
21729	25286	1893100	2.3E+15	Deed COG	City of Gre	40260	Local Gove	20030319	20190503
21730	26743	1893120	2.3E+15	COS or plat	City of Gre	40220	Local Gove	20100519	20101228
21736	28849	1893360	2.3E+15	COS or plat	City of Gre	40220	Local Gove	20100107	20100107
21750	28646	1896350	2.3E+15	Deed COG	City of Gre	40260	Local Gove	20020305	20020305
21756	25540	1896510	2.3E+15	Deed COG	City of Gre	40260	Local Gove	20020305	20190503
21757	25564	1896520	2.3E+15	COS or plat	City of Gre	40220	Local Gove	20020305	20091005
21763	27188	1898000	2.3E+15	COS or plat	City of Gre	40260	Local Gove	20020210	20190421
21793	33603	1900200	2.3E+15	COS or plat	City of Gre	40260	Local Gove	20020129	20190421
21794	38692	1900350	2.3E+15	COS or plat	City of Gre	40260	Local Gove	20021206	20021206
21800	4155	1904000	2.31E+15	COS or plat	City of Gre	40260	Local Gove	20020617	20020617
21802	9431	1904250	2.3E+15	COS or plat	City of Gre	40220	Local Gove	20020828	20020828
21804	9421	1904400	2.3E+15	COS or plat	City of Gre	40260	Local Gove	20020828	20020828
21807	9291	1906100	2.3E+15	Deed COG	City of Gre	40220	Local Gove	20021118	20190421
21808	8693	1906300	2.3E+15	Plat book,	City of Gre	40260	Local Gove	20021107	20190421
21809	9045	1906325	2.3E+15	COS or plat	City of Gre	40220	Local Gove	20021107	20161209
21810	8406	1906350	2.3E+15	COS or plat	City of Gre	40260	Local Gove	20021107	20190421
21840	17838	1914100	2.3E+15	Deed COG	City of Gre	40220	Local Gove	20021213	20021213
21855	28634	1916825	2.3E+15	COS or plat	City of Gre	40220	Local Gove	20030220	20030220
21864	19371	1923400	2.3E+15	COS or plat	City of Gre	40220	Local Gove	20021212	20190421
21882	39175	2018021	2.3E+15	COS or plat	City of Gre	40220	Local Gove	20170327	20170620
21906	39248	2018117	2.3E+15	Plat book,	City of Gre	40220	Local Gove	20180531	20180531
22224	35142	2462905	2.3E+15	Deed COG	City of Gre	40220	Local Gove	20021018	20180801
22374	39068	2580088	2.31E+15	COS or plat	City of Gre	40220	Local Gove	20150805	20160728
22383	38430	2608050	2.31E+15	Deed COG	City of Gre	40220	Local Gove	20020520	20020520
22384	38428	2608245	2.31E+15	COS or plat	City of Gre	10000	Private	20101220	20141113
22392	4610	2608950	2.31E+15	Deed COG	City of Gre	40220	Local Gove	20020617	20020617
22394	13354	2614620	2.3E+15	COS or plat	City of Gre	40220	Local Gove	20021206	20190421

IN_CITY			CITY OF GREAT FALLS
IN_CITY		SPLIT 2020 SPLIT 2020	CITY OF GREAT FALLS
IN_CITY			CITY OF GREAT FALLS
IN_CITY			CITY OF GREAT FALLS
IN_CITY			CITY OF GREAT FALLS
IN_CITY			CITY OF GREAT FALLS
IN_CITY			CITY OF GREAT FALLS
IN_CITY	2022-23	SPLIT 2023 SPLIT FOR	CITY OF GREAT FALLS
IN_CITY			CITY OF GREAT FALLS
IN_CITY			CITY OF GREAT FALLS
IN_CITY		SPLIT 2009 COMBININ	CITY OF GREAT FALLS
IN_CITY			CITY OF GREAT FALLS
IN_CITY	COS 2479		CITY OF GREAT FALLS
IN_CITY			CITY OF GREAT FALLS
IN_CITY		SPLIT 2009 BARGAIN C	CITY OF GREAT FALLS
IN_CITY			CITY OF GREAT FALLS
IN_CITY	COS 1930		CITY OF GREAT FALLS
IN_CITY			CITY OF GREAT FALLS
IN_CITY		PROPERTY	CITY OF GREAT FALLS
IN_CITY	COS 4697	SPLIT 2011 COS RETRA	CITY OF GREAT FALLS
IN_CITY	PL 2009-38	SPLIT 2010 PLAT CREA	CITY OF GREAT FALLS
IN_CITY			CITY OF GREAT FALLS
IN_CITY			CITY OF GREAT FALLS
IN_CITY	COS 4633	SPLIT 2010 COS RELOC	CITY OF GREAT FALLS
IN_CITY	1975 REPLAT		CITY OF GREAT FALLS
IN_CITY	PRT COS 2834		CITY OF GREAT FALLS
IN_CITY			CITY OF GREAT FALLS
IN_CITY			CITY OF GREAT FALLS
IN_CITY			CITY OF GREAT FALLS
IN_CITY		SPLIT 2017 PORTION C	CITY OF GREAT FALLS
IN_CITY			CITY OF GREAT FALLS
IN_CITY	COS 3295	SPLIT 2017 PORTION C	CITY OF GREAT FALLS
IN_CITY	COS 1635, 1642		CITY OF GREAT FALLS
IN_CITY			CITY OF GREAT FALLS
IN_CITY			CITY OF GREAT FALLS
IN_CITY	PL 2006-24, 4497		CITY OF GREAT FALLS
IN_CITY	COS 5077	SPLIT 2018 COS SPLITI	CITY OF GREAT FALLS
IN_CITY		SPLIT 2018 CREATING	CITY OF GREAT FALLS
IN_CITY		SPLIT 2018 SPLIT REAC	CITY OF GREAT FALLS
IN_CITY	PL 2015-38	SPLIT 2016 OWNCODE	CITY OF GREAT FALLS
IN_CITY		SPLIT 2015 CITY RESOI	CITY OF GREAT FALLS
IN_CITY	PL 2014-38	SPLIT 2015 PLAT CREA	CITY OF GREAT FALLS
IN_CITY		SPLIT 2009 RESOLUTIC	CITY OF GREAT FALLS
OUT_CITY_COS 3251			CITY OF GREAT FALLS

22405	2817	2703903	2.31E+15	COS or plat	City of Gre	40220	Local Gove	20020731	20081212
22508	36675	1876690	02301501	COS or plat	City of Gre	40220	Local Gove	20020620	20140701
22548	37952	1992500	2.31E+15	COS or plat	City of Gre	40220	Local Gove	20020716	20020716
22586	19403	2049200	2.3E+15	Plat book,	City of Gre	40220	Local Gove	20020828	20190502
22588	28895	2071700	2.3E+15	COS or plat	City of Gre	40220	Local Gove	20030325	20190502
22598	30514	2073850	2.3E+15	COS or plat	City of Gre	40220	Local Gove	20030325	20190502
22616	13380	2109450	2.3E+15	COS or plat	City of Gre	40220	Local Gove	20030414	20030414
24891	8605	2397350	2.3E+15	Deed COG	City of Gre	40260	Local Gove	20030417	20030417
24895	8787	2399810	2.3E+15	COS or plat	City of Gre	40220	Local Gove	20030417	20190422
24897	8813	2407525	2.3E+15	Deed COG	City of Gre	40260	Local Gove	20020515	20190422
24898	10244	2408400	2.3E+15	Deed COG	City of Gre	40260	Local Gove	20020508	20020508
24930	28147	2424600	2.3E+15	COS or plat	City of Gre	40220	Local Gove	20030313	20030313
24950	37016	2449900	2.3E+15	COS or plat	City of Gre	40220	Local Gove	20020128	20020128
24964	2341	2577700	2.31E+15	COS or plat	City of Gre	40220	Local Gove	20020507	20020507
24992	14312	2612450	2.3E+15	Deed COG	City of Gre	40240	Local Gove	20120330	20120330
24993	9420	2612500	2.3E+15	Deed COG	City of Gre	40220	Local Gove	20050603	20140701
24994	38242	2612750	2.3E+15	COS or plat	City of Gre	40220	Local Gove	20130703	20130703
25002	7259	2619800	2.3E+15	COS or plat	City of Gre	40260	Local Gove	20021023	20021023
25004	7448	2620210	2.3E+15	COS or plat	City of Gre	40220	Local Gove	20041015	20041015
25010	36611	2631075	2.3E+15	COS or plat	City of Gre	40220	Local Gove	20040427	20170510
25018	30050	2635350	2.3E+15	COS or plat	City of Gre	40220	Local Gove	20030220	20030220
25021	1719	2696050	2.31E+15	COS or plat	City of Gre	40220	Local Gove	20020531	20020531
25022	1677	2696100	2.31E+15	COS or plat	City of Gre	40220	Local Gove	20020531	20020531
25023	1988	2697150	2.31E+15	COS or plat	City of Gre	40220	Local Gove	20020531	20020531
25025	2702	2711310	2.31E+15	COS or plat	City of Gre	40220	Local Gove	20020618	20190420
27066	30672	2073800	2.3E+15	COS or plat	City of Gre	40220	Local Gove	20030325	20030325
27176	10234	17350	2.3E+15	Deed COG	City of Gre	40220	Local Gove	20021114	20190628
27347	4821	2703252	2.31E+15	COS or plat	City of Gre	40260	Local Gove	20020808	20190420
27349	36582	2716400	2.31E+15	Plat book,	City of Gre	40220	Local Gove	20020520	20020520
27391	15239	134600	2.3E+15	COS or plat	City of Gre	40260	Local Gove	20020904	20020904
29408	39315	3016300	2.31E+15	Plat book,	City of Gre	40220	Local Gove	20190830	20190830
29409	39316	3015100	2.31E+15	Plat book,	City of Gre	40220	Local Gove	20190830	20190830
31021	39320	2020204	2.31E+15	COS or plat	City of Gre	40260	Local Gove	20020508	20200506
32625	39396	2020046	2.3E+15	COS or plat	City of Gre	10000	Private	20041124	20210809
32626	39395	2020032	2.3E+15	COS or plat	City of Gre	10000	Private	20041124	20210825
49246	24266	2022198	2.3E+15	COS or plat	City of Gre	40260	Local Gove	20220728	20220728
54497	36679	2023148	2.3E+15	COS or plat	City of Gre	10000	Private	20230728	<Null>
54499	39454	2023149	2.3E+15	COS or plat	City of Gre	40260	Local Gove	20230730	<Null>

IN_CITY	COS 4573	SPLIT 2011 RESOLUTIC	CITY OF GREAT FALLS
OUT_CITY_UNINCORP			CITY OF GREAT FALLS
OUT_CITY_PL 2797			CITY OF GREAT FALLS
OUT_CITY_COS 869			CITY OF GREAT FALLS
OUT_CITY_UNINCORP			CITY OF GREAT FALLS
OUT_CITY			CITY OF GREAT FALLS
OUT_CITY_COS 2372			CITY OF GREAT FALLS
OUT_CITY_UNINCORP			CITY OF GREAT FALLS
OUT_CITY_COS 2414,	SPLIT 2009 COMBININ		CITY OF GREAT FALLS
OUT_CITY_UNINCORP			CITY OF GREAT FALLS
OUT_CITY			CITY OF GREAT FALLS
OUT_CITY_UNINCORP			CITY OF GREAT FALLS
OUT_CITY_UNINCORP			CITY OF GREAT FALLS
OUT_CITY_COS 2982,	3618		CITY OF GREAT FALLS
OUT_CITY_UNINCORP			CITY OF GREAT FALLS
OUT_CITY_UNINCORP			CITY OF GREAT FALLS
OUT_CITY_COS 1154			CITY OF GREAT FALLS
OUT_CITY_UNINCORP			CITY OF GREAT FALLS
OUT_CITY_UNINCORP			CITY OF GREAT FALLS
OUT_CITY_COS 5081	SPLIT 2018 COS 5081,		CITY OF GREAT FALLS
OUT_CITY_COS 3790			CITY OF GREAT FALLS
OUT_CITY_UNINCORP			CITY OF GREAT FALLS
OUT_CITY_UNINCORP			CITY OF GREAT FALLS
OUT_CITY_UNINCORP			CITY OF GREAT FALLS
OUT_CITY_COS 3635			CITY OF GREAT FALLS
OUT_CITY			CITY OF GREAT FALLS
IN_CITY			CITY OF GREAT FALLS
OUT_CITY_COS 2114			CITY OF GREAT FALLS
OUT_CITY_UNINCORP			CITY OF GREAT FALLS
IN_CITY			CITY OF GREAT FALLS
OUT_CITY_UNINCORP	<Null>		CITY OF GREAT FALLS
OUT_CITY_UNINCORP	<Null>		CITY OF GREAT FALLS
IN_CITY	PL 2019-26	SPLIT 2020 PLAT 2019	CITY OF GREAT FALLS
IN_CITY	PL 2019-35	2022-99, 2 ANNEXATI	THE CITY OF GREAT FALLS
IN_CITY	PL 2019-35	2022-101; PLAT (PL 2)	THE CITY OF GREAT FALLS
OUT_CITY	2021-24	2022-108	VACATE RC CITY OF GREAT FALLS
IN_CITY	PT 2022-2	SPLIT 2023 SPLIT FROM	CITY OF GREAT FALLS
IN_CITY	PL 2022-24	2023-073	LOTS CREA CITY OF GREAT FALLS



Cannabis (Marijuana) Use in Montana

	United States	Montana
Percent of adults aged 18+ who report past month cannabis use ¹	18.0% 2019-2020	16.5% 2019-2020
Percent of population aged 16-20 who report driving under the influence of cannabis ¹	7.3% 2019-2020	16.5% 2019-2020

Key Points

“**Marijuana**” refers to parts of or products from the plant *Cannabis sativa* that contain substantial amounts of tetrahydrocannabinol (THC). THC is primarily responsible for the effects on a person’s mental state.

“**Cannabis**” refers to all products derived from the *Cannabis sativa* plant. For this document, we will use the term cannabis instead of marijuana.

- From January through June of 2022, sales of cannabis in Montana totaled over **\$148 million**; 63% was for non-medical (recreational) use.²
- In 2021, there were **5,218** cannabis-related hospitalizations and emergency department visits.³
- Though rarely fatal, overdosing on cannabis is possible. Rapid heart rate, poor coordination, extreme confusion, dizziness, and lethargy are symptoms of cannabis poisoning. Between 2020 and 2021, there were **163 cannabis poisoning cases** seen in Montana emergency departments; **36 (22%) of these were among children aged 10 and under.**⁵



Cannabis (Marijuana) Use in Montana

Montana initially legalized cannabis for medical purposes in 2004. In November of 2020, 57% of Montanans voted in favor of Initiative 190 (I-190), which legalized non-medical adult-use cannabis for adults 21 years or older. Eligible dispensaries began selling cannabis for adult-use on January 1st of 2022 in counties where the majority of citizens voted in favor of I-190.

1. National Survey on Drug Use and Health, State Estimates, 2019-2020. Retrieved from: <https://www.samhsa.gov/data/nsduh/state-reports-NSDUH-2020>
2. Montana Department of Revenue, Cannabis Sales Reports, 2022. Retrieved from: <https://mtrevenue.gov/cannabis-sales-reports/>
3. Montana Hospital Discharge Data System, 2019-2021 Office of Epidemiology and Scientific Support, Public Health and Safety Division. Montana Department of Public Health and Human Services. Data provided courtesy of participating MHA members

For more information on what the Department of Public Health and Human Services is doing to bring education, prevention, and support to local leaders and their communities regarding cannabis/marijuana, please visit:

<https://dphhs.mt.gov/prevention/marijuanaprevention>