



**Journal of Commission Work Session
2 Park Drive South, Great Falls, MT
Civic Center Gibson Room 212
March 20, 2018**

1. Call to Order - 5:30 p.m.

CITY COMMISSION MEMBERS PRESENT: Bob Kelly, Bill Bronson, Tracy Houck, Owen Robinson and Mary Sheehy Moe.

STAFF PRESENT: City Manager Greg Doyon and Deputy City Manager Chuck Anderson; City Attorney Sara Sexe; Finance Director Melissa Kinzler; Planning and Community Development Director Craig Raymond; Park and Recreation Director Steve Herrig; Public Works Director Jim Rearden; Human Resources Director Gaye McInerney; and, City Clerk Lisa Kunz.

2. Public Comment.

None.

3. Introductions & Updates from Neighborhood Council #5.

Mayor Kelly reported that Neighborhood Council 5's boundaries are: the northern boundary is 10th Avenue South, the eastern and southern boundaries are the City limit line, and the western boundary is 20th Street South. Council 5 holds its meetings on the third Monday of the month in the Great Falls Clinic Specialty Center, at 3000 15th Avenue South, in the main floor conference room at 7:00 p.m.

Council Chairman Eric Ray recognized the Park and Recreation Department for its amazing service this winter clearing the park trail on a regular basis providing walking opportunities where the surface was safe. He noted that the Council is in support of the possibility of a Park District.

Chairman Ray expressed concerns for vehicular and pedestrian traffic at the corner of 10th Avenue South and 32nd Street. He requested that the City initiate a conversation with Montana Department of Transportation, and to report the State's response back to the Council.

With regard to recreational vehicle parking on City streets, Chairman Ray suggested the City utilize the councils as an asset in that councils could help with posting to let neighbors know they are not in compliance. He requested that the City Attorney bring the council up to date at the council's meeting next month.

Chairman Ray discussed the east end development that has occurred the past couple of years. He reported that the council is pro-east end development that pertains to retail, commercial and residential. The council is going to be vocal and take advantage of every opportunity the council has to express its support for east end development.

It was requested that the council provide its written concerns regarding the corner of 10th Avenue South and 32nd Street for Public Works to provide assistance.

Council Secretary Marcia Anderson also expressed concerns about a signal light on 38th Street and 10th Avenue South and suggested that it be adjusted.

4. Great Falls School District -- Kranz Park -- Tammy Lacey.

Tammy Lacey, Superintendent, Great Falls Public Schools, 1100 4th Street South, introduced Tom Moore, Assistant Superintendent for secondary education, and Ron Nemetz of NE45 Architecture. She provided a Great Falls Public Schools pamphlet pertaining to its operation levy on the upcoming May 8, 2018 election ballot.

Superintendent Lacey commented that parking at Great Falls High School has been talked about for a long time. In 1979 the field house was built on what was then a big chunk of parking. The parking problem was exasperated when the south campus was added on and took up some of the parking. A comprehensive study was done in 2010 of Great Falls High School. As part of the conclusion of that study, there was a very specific parking study that was conducted in 2012. That study suggested an additional 400 spaces would be needed. Superintendent Lacey noted, at this time, they are attempting to identify 100 additional spaces.

Superintendent Lacey reviewed and discussed the attached PowerPoint depicting slides about Great Falls High School parking and transportation guiding principles, parking supply of 418 total spaces in nine lots, and engineering maps depicting the campus and parking layouts. After reviewing several parking scenarios, including discussion about the old Campfire building, she presented another possibility to the Commission of utilizing a portion of Kranz park to expand parking by 107 spaces there, and the potential possibility of angle parking on 17th Street. She proposed that they would incentivize students to park there, and the additional space would also accommodate parking for sporting events.

Assistant Superintendent Moore added that elevated parking was also investigated and is cost prohibitive.

After a brief question and answer period, Superintendent Lacey suggested a possible solution could be Great Falls Public Schools donating playground equipment to be installed in Kranz park and developing a family space on the remaining part of the park.

Barney Danishefsky, Neighborhood Council 9 Chairman, read a prepared statement wherein he noted that the amount of property under consideration is approximately four City lots. The current market value in that area is \$30,000 per lot for a total of \$120,000. The monies could be used to fully develop the remainder of the park to not only include an all inclusive playground but also a pavilion with restrooms and other amenities like picnic tables and benches. He concluded that they appreciate the School District's efforts to find off street parking for Great Falls High School. However, this neighborhood that already

endures many problems with school traffic should not also have to consider giving up parkland without compensation. The council will work with the School administration and Park and Recreation Department to come to an equitable deal for the neighborhood.

Park and Recreation Director Steve Herrig commented that Park and Recreation submitted two grant applications for a playground, pavilion, picnic tables and trash cans for Kranz park. If the grants are awarded, he suggested then working with the School District on how it can help with the installation, sidewalks, etc., and that he has another idea for the school's proposed donated equipment.

City Manager Greg Doyon commented that, if the Commission doesn't have a serious concern about utilizing the space as it has been presented, then he will work with the school administration to come up with an agreement that will address the neighborhood concerns, public safety needs of the area, and the needs for the park. Manager Doyon received consensus of the Commission in favor of having continued discussions to try to come to an agreement, taking into consideration the neighborhood concerns and what is best for Great Falls as a whole.

City Attorney Sara Sexe noted that any proposed sale, trade or lease of City property would come back before the Commission at a public hearing for consideration.

5. Discussion of Potential Upcoming Work Session Topics.

Manager Doyon reported that the agenda for the April 3rd work session will consist of an update from Neighborhood Council 6, and updates from Planning and Community Development pertaining to the CDBG reorganization/restructure and McKinstry energy audit.

Manager Doyon asked if there were any topics to add to the work session list.

Mayor Kelly noted that the Commission will be meeting on March 27th at the Fire Training Center at noon as a follow up to what the Commission heard from Department Heads during the State of the City meeting in preparation for the budget.

6. Adjourn.

There being no further discussion, Mayor Kelly adjourned the informal work session of March 20, 2018, at 6:37 p.m.



GFHS PARKING & TRANSPORTATION GUIDING PRINCIPLES

➤ **PARKING at GFHS shall:**

- Enhance the safety of students, public and staff
- Support the educational mission of the school and the district
- Maximize utilization of current resources
- Compliment the master plan and its strategies
- Promote a sensitivity to the surrounding neighborhood
- Reflect a spirit of community partnership
- Promote equity by balancing the needs of the users:
 - Public-Visitors/Guests/Special Needs
 - Students & Staff

**GREAT
FALLS
HIGH
SCHOOL**

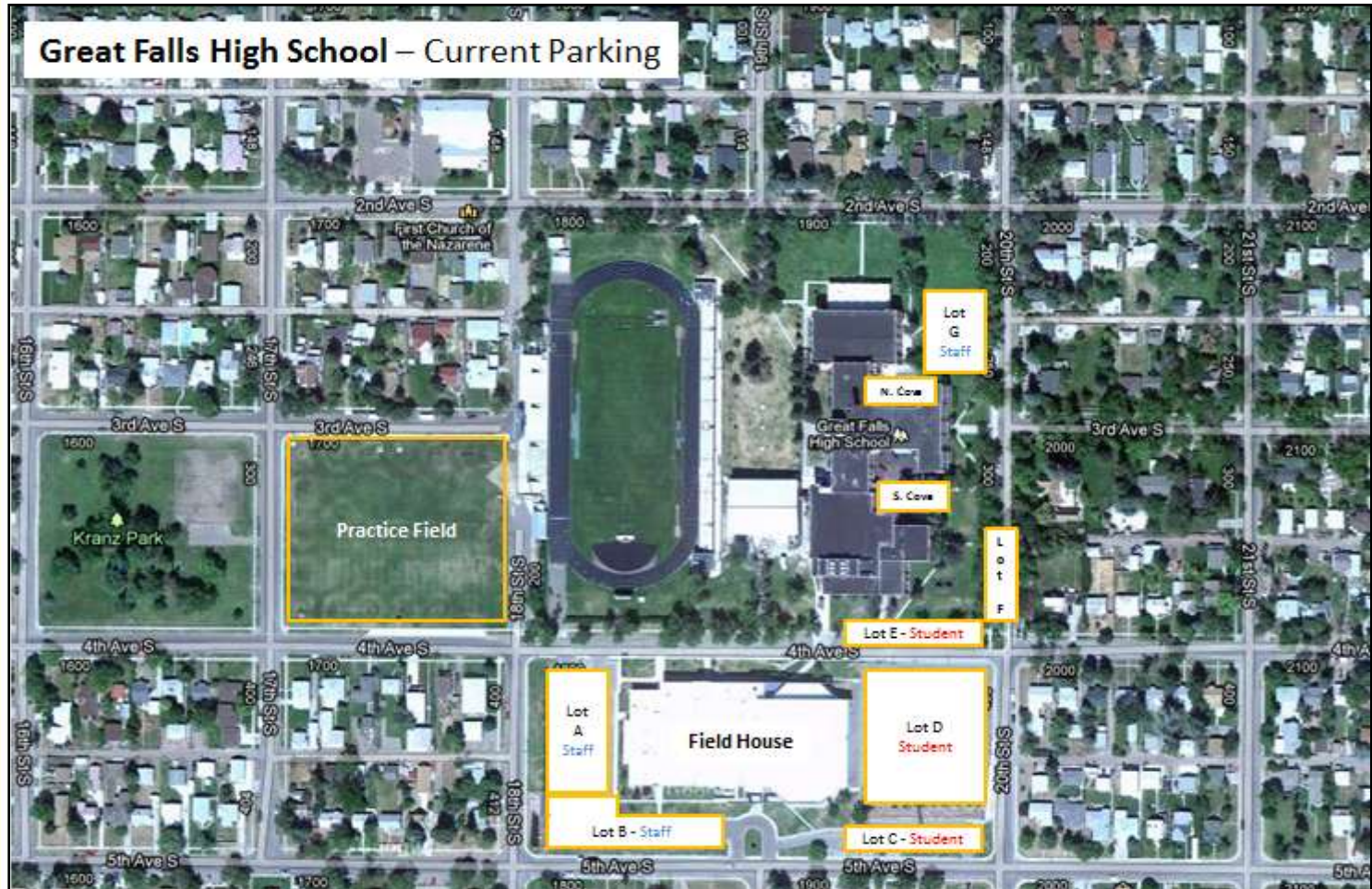
**2012
PARKING
STUDY**



GFHS Parking Supply

GREAT
FALLS
HIGH
SCHOOL

2012
PARKING
STUDY

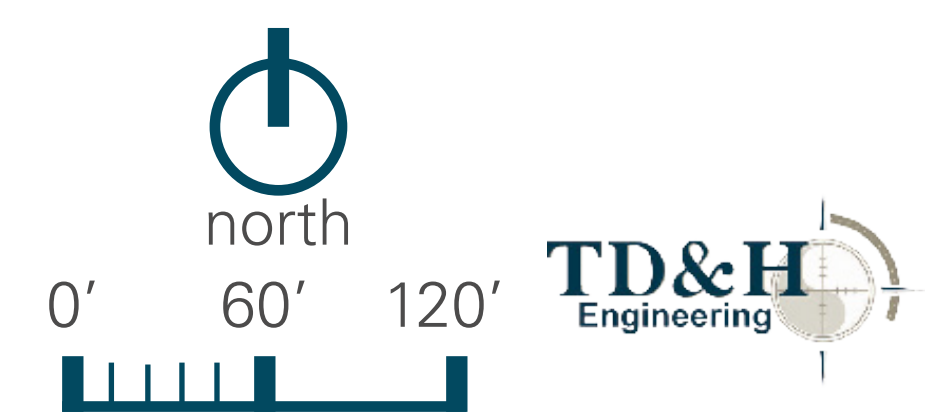
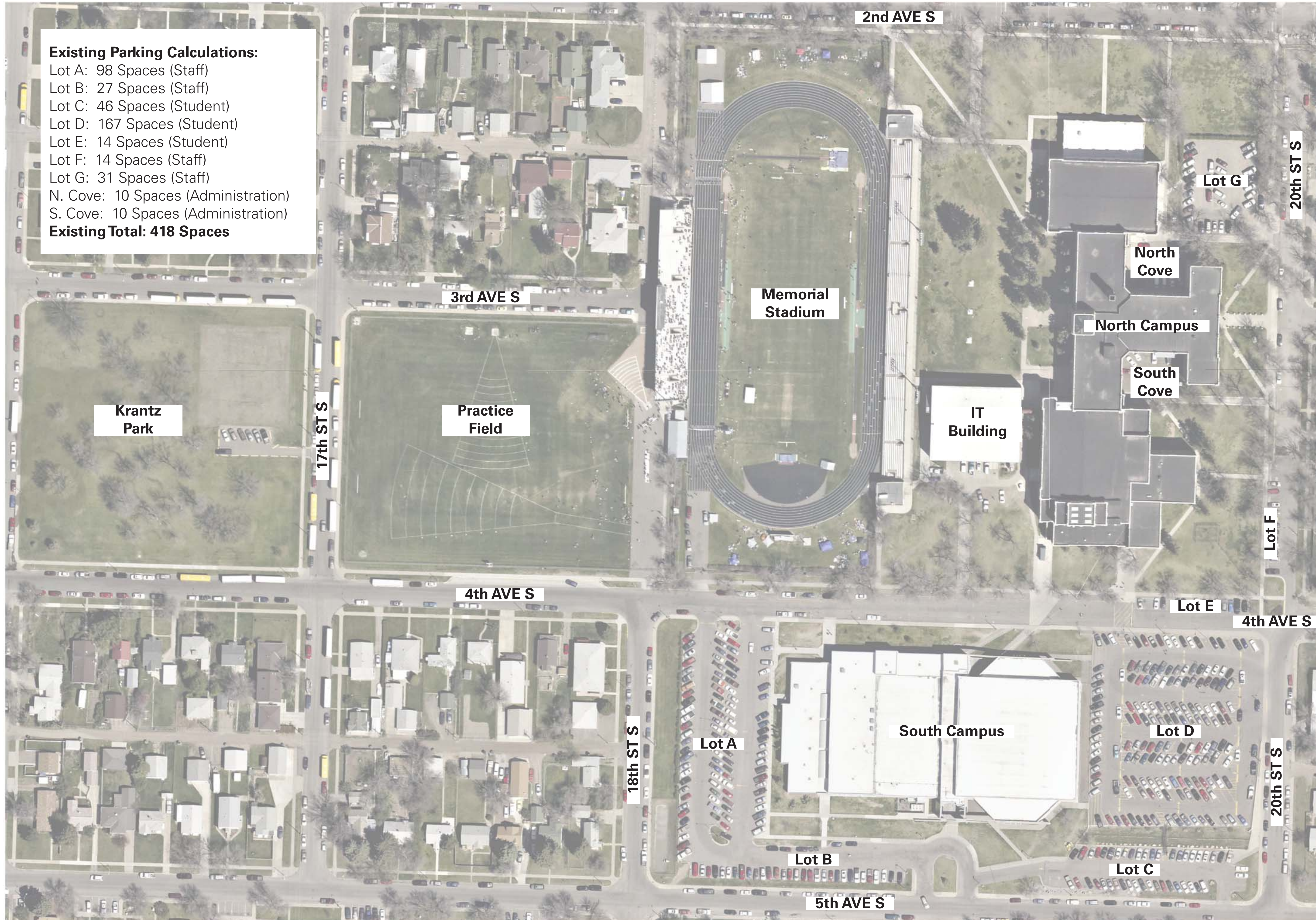


➤ 418 Total Space in 9 Lots.

GREAT FALLS HIGH SCHOOL / EXISTING SITE CONDITIONS

Existing Parking Calculations:

- Lot A: 98 Spaces (Staff)
- Lot B: 27 Spaces (Staff)
- Lot C: 46 Spaces (Student)
- Lot D: 167 Spaces (Student)
- Lot E: 14 Spaces (Student)
- Lot F: 14 Spaces (Staff)
- Lot G: 31 Spaces (Staff)
- N. Cove: 10 Spaces (Administration)
- S. Cove: 10 Spaces (Administration)
- Existing Total: 418 Spaces**

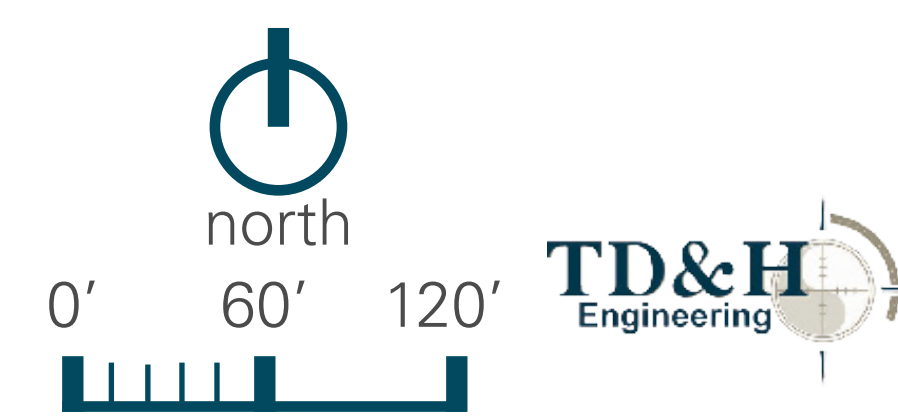
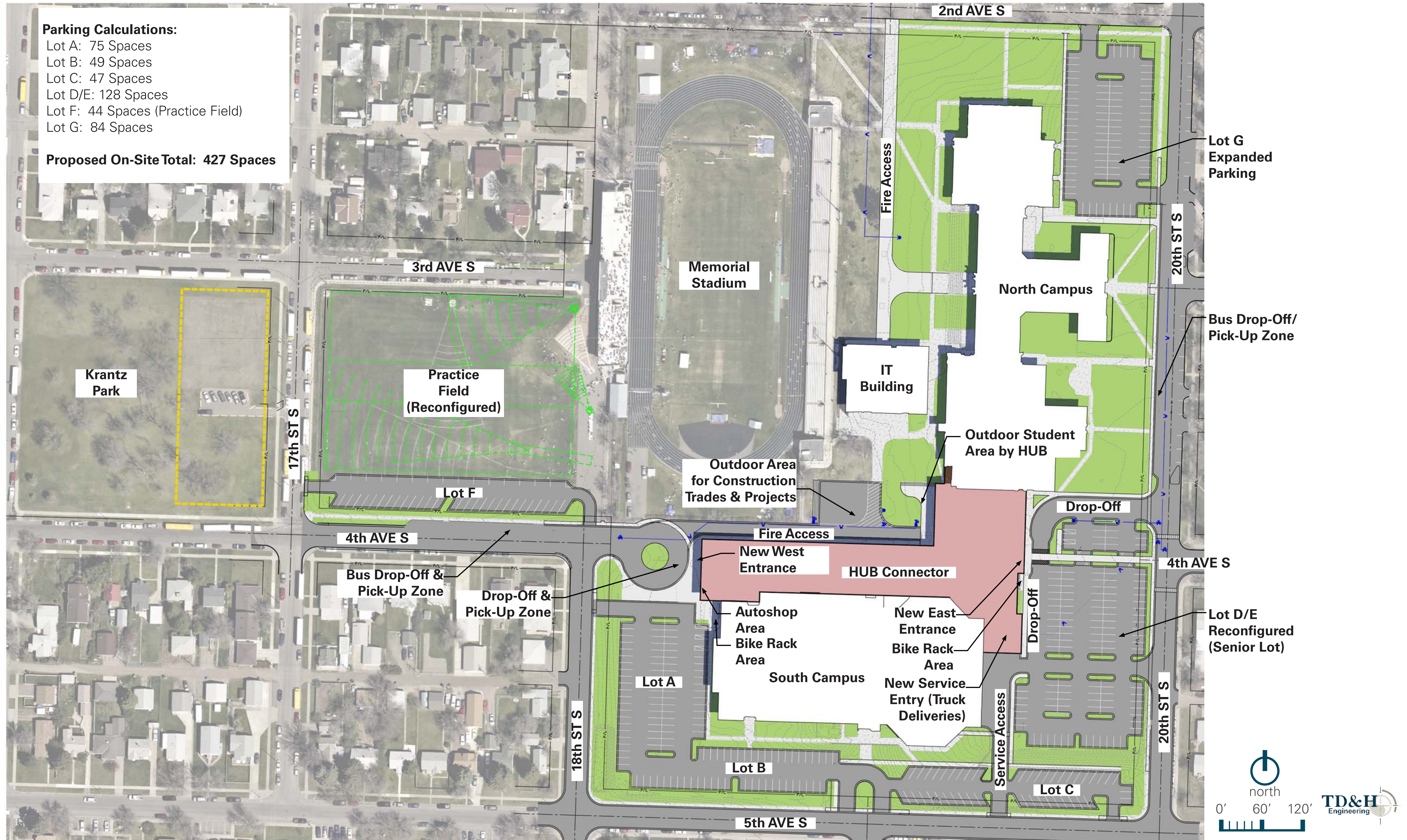


GREAT FALLS HIGH SCHOOL / UPDATED CAMPUS SITE PLAN

Parking Calculations:

- Lot A: 75 Spaces
- Lot B: 49 Spaces
- Lot C: 47 Spaces
- Lot D/E: 128 Spaces
- Lot F: 44 Spaces (Practice Field)
- Lot G: 84 Spaces

Proposed On-Site Total: 427 Spaces



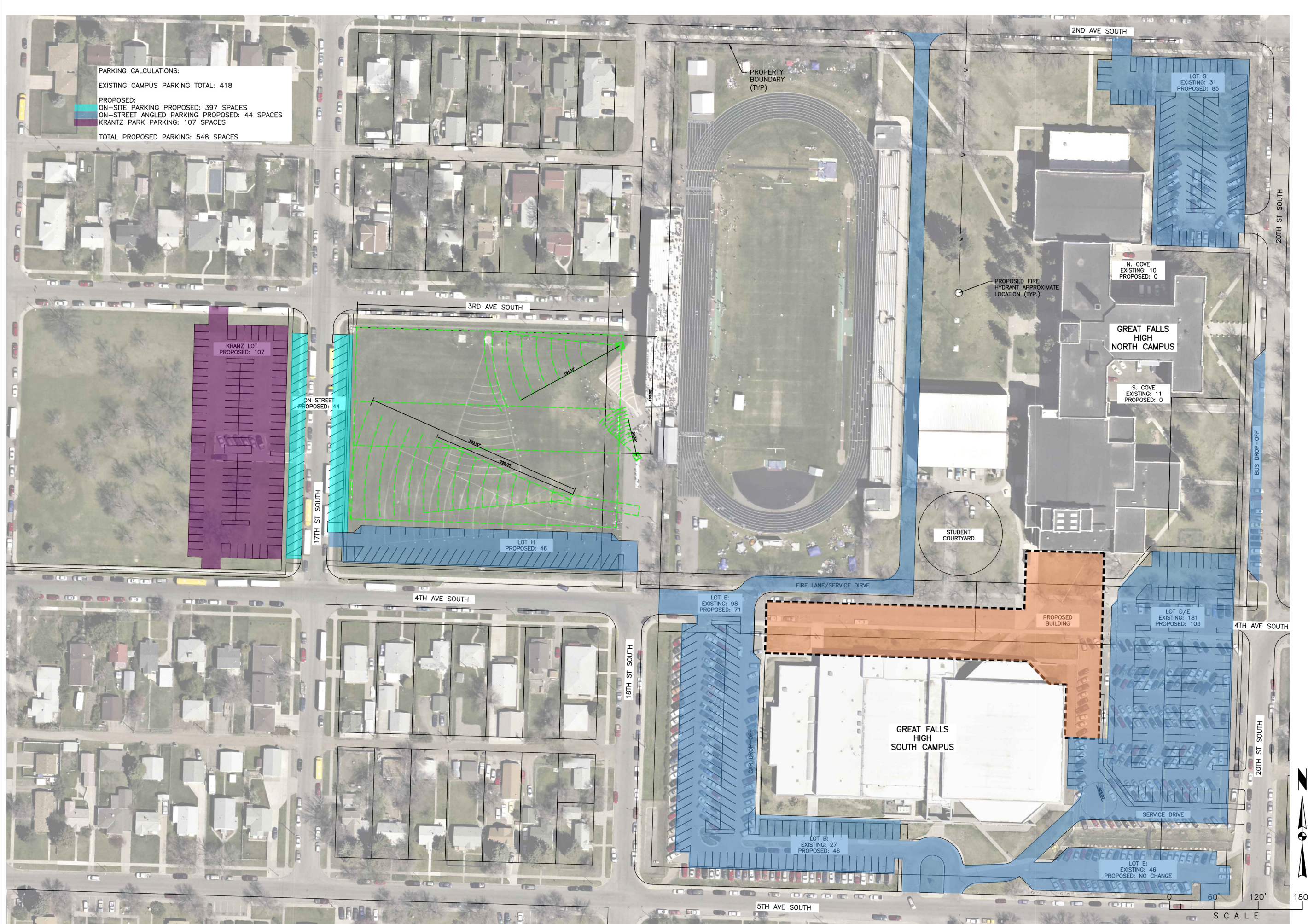
NOT FOR CONSTRUCTION

REV	DATE	REVISION



DRAWN BY: JCC
DESIGNED BY: JCC
QUALITY CHECK: JCC
DATE: 01/04/18
JOB NO. 17-234
FIELDBOOK

GREAT FALLS PUBLIC SCHOOL DISTRICT
GREAT FALLS, MONTANA
GREAT FALLS HIGH ADDITION AND RENOVATION
SCHEMATIC DESIGN - OPTION 4



PARKING CALCULATIONS:
EXISTING CAMPUS PARKING TOTAL: 418
PROPOSED:
ON-SITE PARKING PROPOSED: 397 SPACES
ON-STREET ANGLED PARKING PROPOSED: 44 SPACES
KRANTZ PARK PARKING: 107 SPACES
TOTAL PROPOSED PARKING: 548 SPACES

J:\2017\17-234 Great Falls High School\CADD\CIVIL\17-234 SD DESIGN-4.dwg, 1/4/2018 1:57:17 PM, jcc