

09.27.2024

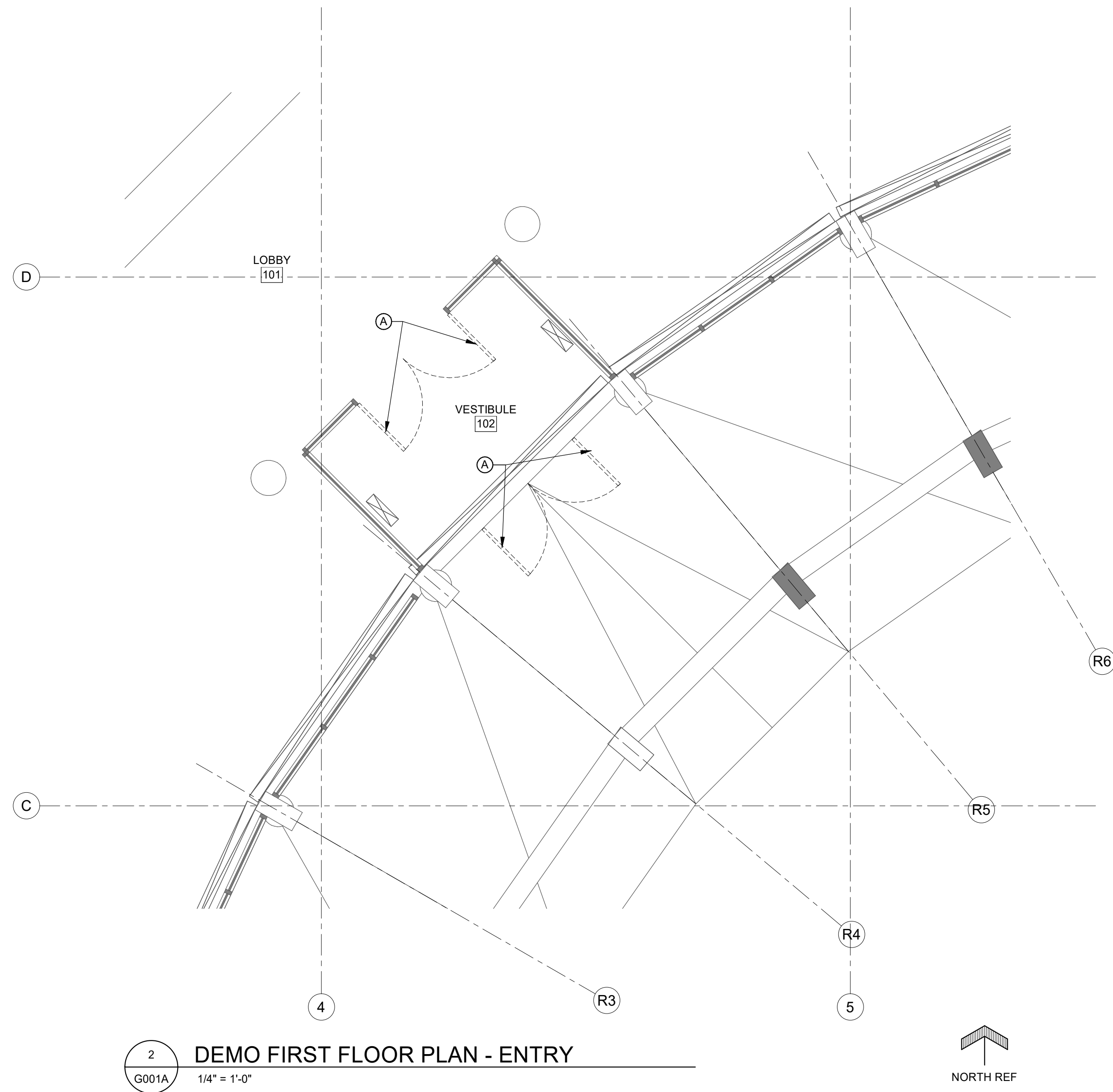
301 2ND AVE N, GREAT FALLS, MT 59401  
CITY OF GREAT FALLS, MT LIBRARY  
**RENOVATION**

CONSTRUCTION DOCUMENTS

**PROJECT ADDRESS**

301 2ND AVE NORTH  
GREAT FALLS, MT 59401

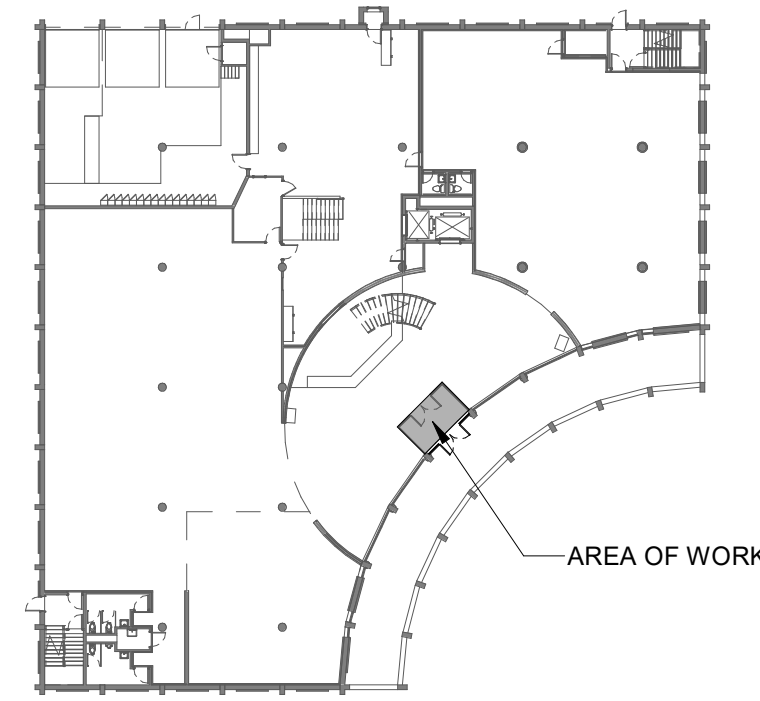
VICINITY MAP: *Locator*



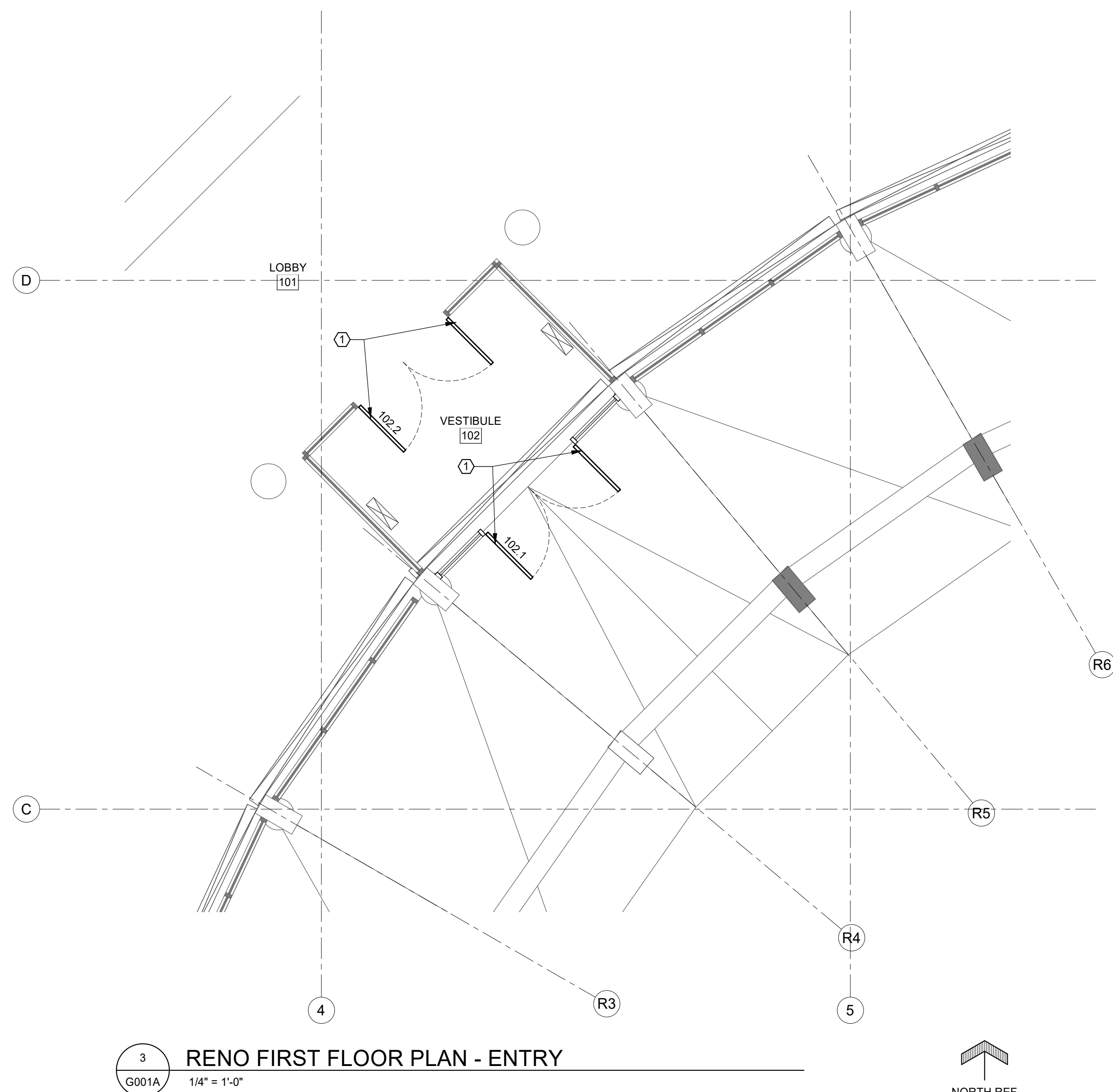
2 DEMO FIRST FLOOR PLAN - ENTRY  
G001A 1/4" = 1'-0"

**DEMO NOTES**

- A. DEMO EXISTING DOUBLE DOORS, THRESHOLD AND HARDWARE. FRAME TO REMAIN.



KEY PLAN - 1ST  
1" = 40'-0"



3 RENO FIRST FLOOR PLAN - ENTRY  
G001A 1/4" = 1'-0"

KEY PLAN - 1ST  
1" = 40'-0"

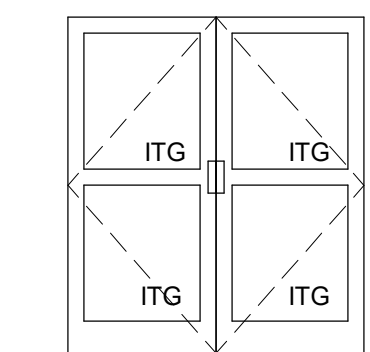
DOOR NUMBER	ROOM NUMBER	ROOM NAME	DOOR										FRAME			HARDWARE	
			SIZE			MTL	TYPE	GLAZE	MTL	TYPE	DETAIL	HEAD	JAMB	SILL	NOTES		
			W	H	T												
102.1	102	VESTIBULE	6'-0"	7'-0"	1 3/4"	ALUM	A	ITG	ALUM	EXIST.					#1		
102.2	102	VESTIBULE	6'-0"	7'-0"	1 3/4"	ALUM	A	ITG	ALUM	EXIST.					#2		

**RENO NOTES**

- 1. REPLACE DOUBLE DOORS.

**DOOR ELEVATIONS - PHASE 1**

1/4" = 1'-0"



A - ALUMINUM  
BRONZE ANODIZED ALUMINUM  
FINISH TO MATCH EXISTING

**DOOR HARDWARE**

ABBREVIATIONS	MANUFACTURER ABBREVIATIONS
AL ALUMINUM	MK MCKINNEY
HM HOLLOW METAL	LCN LCN
ITG 1" INSULATED TEMPERED GLAZING	PK PEMKO
T 1/4" TEMPERED GLAZING	SC SCHLAGE
WD WOOD	TR TRIMCO
CLAD ALUMINUM CLAD WOOD	EW ROCKWOOD

**HARDWARE GROUP #1**

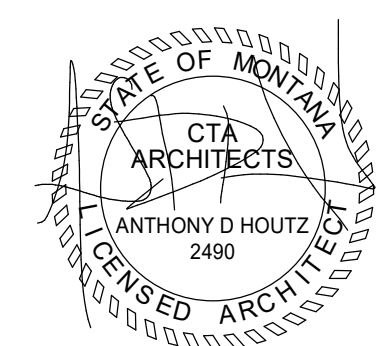
EXTERIOR ALUMINUM PAIR DOORS - 102.1

6 EA	MFR	OFFSET PIVOT HINGES	BRZ (MATCH EXISTING)
1 EA	LCN	POWER ASSISTED CLOSER	
2 EA	-	9500 SENIOR SWING INDEPENDENT	
2 EA	VD	HARDWARE POWER ASSIST BUTTON	
		CONCEALED VERTICAL ROD EXIT DEVICE	
2 EA	SC	5547-NL STANDARD TRIM PULL	
2 EA	SC	CYLINDER	
1 EA	MFR	REMOVABLE MULLION	
1 EA	PK	THRESHOLD - ONE PIECE FULL WIDTH	
1 EA	MFR	JAMB AND HEAD WEATHERSTRIP	
2 EA	MFR	SWEEP	

**HARDWARE GROUP #2**

INTERIOR ALUMINUM PAIR DOORS - 102.2

6 EA	MFR	OFFSET PIVOT HINGES	BRZ (MATCH EXISTING)
1 EA	LCN	POWER ASSISTED CLOSER	
2 EA	-	9500 SENIOR SWING INDEPENDENT	
2 EA	VD	HARDWARE POWER ASSIST BUTTON	
		CONCEALED VERTICAL ROD EXIT DEVICE	
2 EA	SC	5547-DT STANDARD TRIM PULL	
1 EA	MFR	JAMB AND HEAD WEATHERSTRIP	
2 EA	MFR	SWEEP	



ARCHITECTURE  
ANTHONY HOUTZ, AIA  
09.27.2024

301 2ND AVE N, GREAT FALLS, MT 59401  
CITY OF GREAT FALLS, MT LIBRARY  
**RENOVATION**

© 2024 | ALL RIGHTS RESERVED

CONSTRUCTION DOCUMENTS

09.27.2024  
PROJ# | CITYGF24\_LIB  
DRAWN BY | SUMMERS  
REVIEWED BY | HOUTZ

REVISIONS

ENTRY DOOR - REPLACEMENT

G001A